

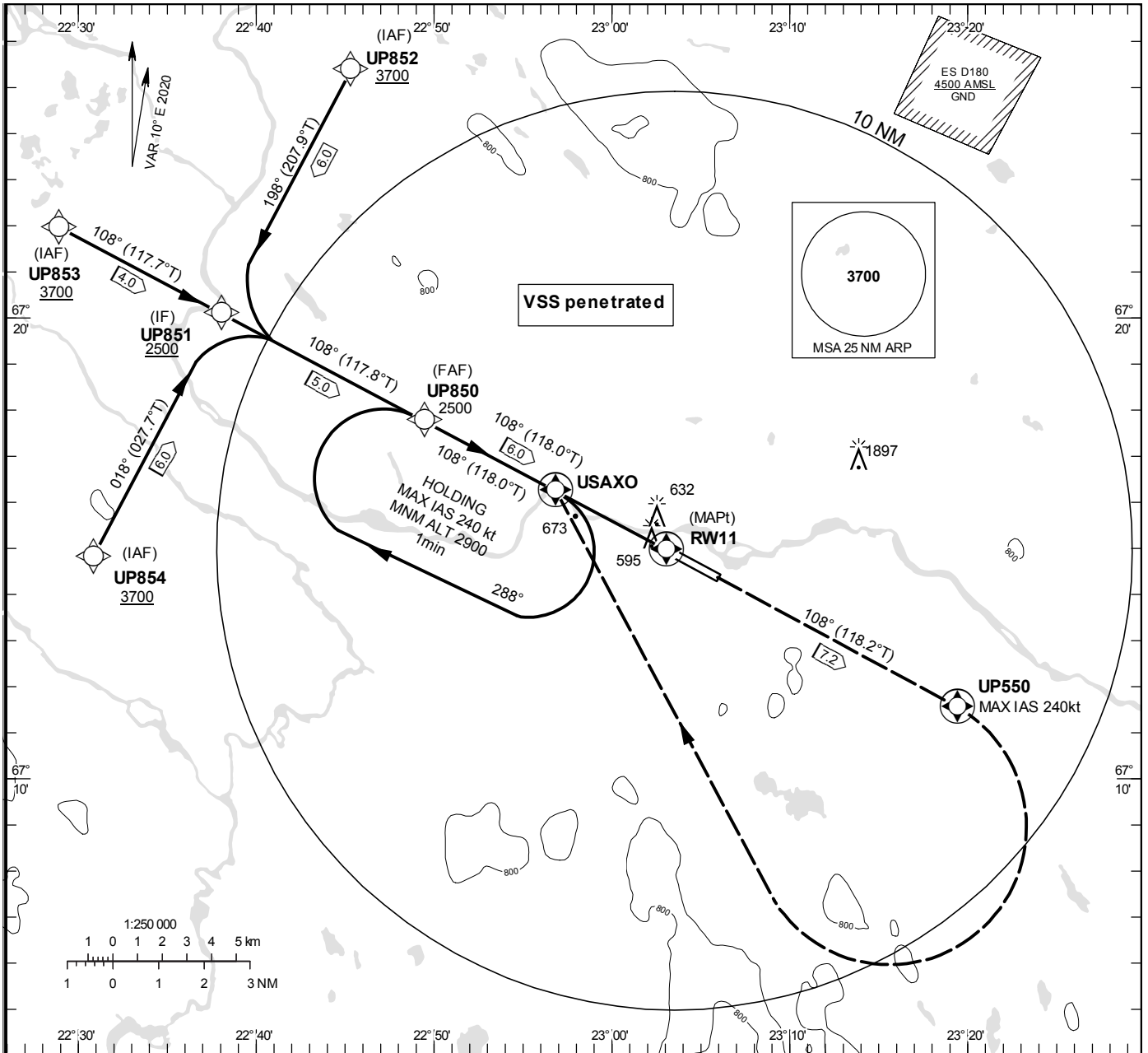
**INSTRUMENT
APPROACH
CHART – ICAO**

THR ELEV 540.5 ft, AD ELEV 542 ft
 OCH are related to THR.
 BRG are MAG (True).
 ALT, HGT and ELEV in ft.

PAJALA INFORMATION 118.380

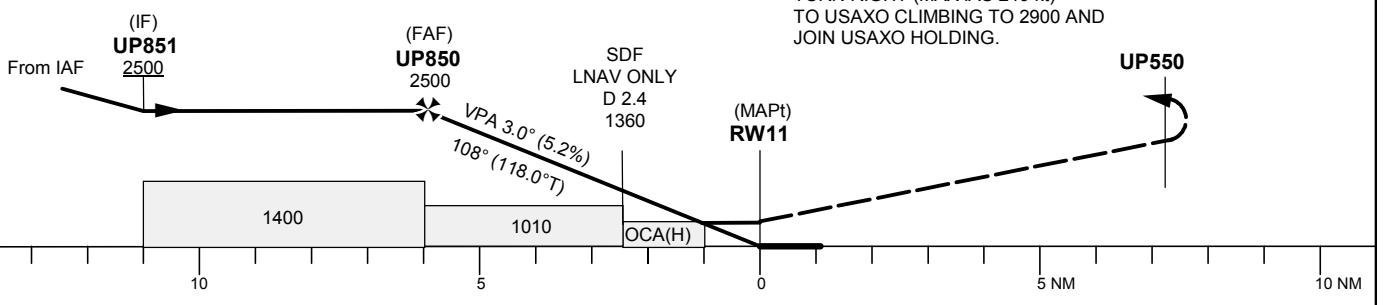
RNP RWY 11

EGNOS CH 88803 E 11A



TA 5000 ft AMSL RDH 50 ft

CLIMB STRAIGHT AHEAD TO UP550,
 TURN RIGHT (MAX IAS 240 kt)
 TO USAXO CLIMBING TO 2900 AND
 JOIN USAXO HOLDING.



Cat of ACFT	OCA (H)				Final approach		Distance FAF-MAPt 6.0 NM					
	A	B	C	D	Dist to RW11	ALT	5	4	3	2		
LPV	763(223)	775(235)	783(243)	794(254)	2180	1860	1550	1230				
LNAV	920(380)				GS	kt	80	100	120	140	160	180
					Rate of descent	ft/min	425	530	635	745	850	955

RNP RWY 11 via UP852

Path Desc	Waypoint Identifier	Fly-over	Course °M(°T)	Dist (NM)	Turn Dir	Altitude	Speed	VPA/RDH	Rec Navaid	Navigation Specification
IF	UP852	-	-	-	-	+3700	-	-	-	RNP APCH
TF	UP851	-	198° (207.9°)	6.0	-	+2500	-	-	-	RNP APCH

RNP RWY 11 via UP853

Path Desc	Waypoint Identifier	Fly-over	Course °M(°T)	Dist (NM)	Turn Dir	Altitude	Speed	VPA/RDH	Rec Navaid	Navigation Specification
IF	UP853	-	-	-	-	+3700	-	-	-	RNP APCH
TF	UP851	-	108°(117.7°)	4.0	-	+2500	-	-	-	RNP APCH

RNP RWY 11 via UP854

Path Desc	Waypoint Identifier	Fly-over	Course °M(°T)	Dist (NM)	Turn Dir	Altitude	Speed	VPA/RDH	Rec Navaid	Navigation Specification
IF	UP854	-	-	-	-	+3700	-	-	-	RNP APCH
TF	UP851	-	018°(027.7°)	6.0	-	+2500	-	-	-	RNP APCH

Path Desc	Waypoint Identifier	Fly-over	Course °M(°T)	Dist (NM)	Turn Dir	Altitude	Speed	VPA/RDH	Rec Navaid	Navigation Specification
IF	UP851	-	-	-	-	+2500	-	-	-	RNP APCH
TF	UP850	-	108°(117.8°)	5.0	-	@2500	-	-	-	RNP APCH
TF	RW11	Y	108°(118.0°)	6.0	-	@591	-	-3.0/50	-	RNP APCH
TF	UP550	Y	108°(118.2°)	7.2	R	-	-240	-	-	RNP APCH
DF	USAXO	Y	-	-	-	-	-	-	-	RNP APCH
HM	USAXO	Y	108°(118.0°)	-	R	+2900	-240	-	-	RNAV 1

FAS Data Block

RNP RWY 11

Input data

Operation Type	0
SBAS Provider	1 (EGNOS)
Airport Identifier	ESUP
Runway	11
Runway Letter	0 (None)
Approach Performance Designator	0
Route Indicator	
Reference Path Data Selector	0
Reference Path Identifier	E11A
LTP/FTP Latitude	671458.2900N
LTP/FTP Longitude	0230304.4700E
LTP/FTP Ellipsoidal Height (metres)	189.4
FPAP Latitude	671423.1900N
Delta FPAP Latitude (seconds)	-35.1000
FPAP Longitude	0230553.4500E
Delta FPAP Longitude (seconds)	168.9800
Threshold Crossing Height	50.0
TCH Units Selector	0 (feet)
Glidepath Angle (degrees)	3.00
Course Width (metres)	105.00
Length Offset (metres)	0
HAL (metres)	40.0
VAL (metres)	50.0

Output data

Data Block	10 10 15 13 05 0B 00 00 01 31 31 05 E4 40 DC 1C 2C 7C E4 09 66 1B C8 ED FE 28 28 05 F4 01 2C 01 64 00 C8 FA 97 E2 E2 96
Calculated CRC Value	97E2E296

Required Additional Data

ICAO Code	ES
LTP/FTP Orthometric Height (metres)	164.8