

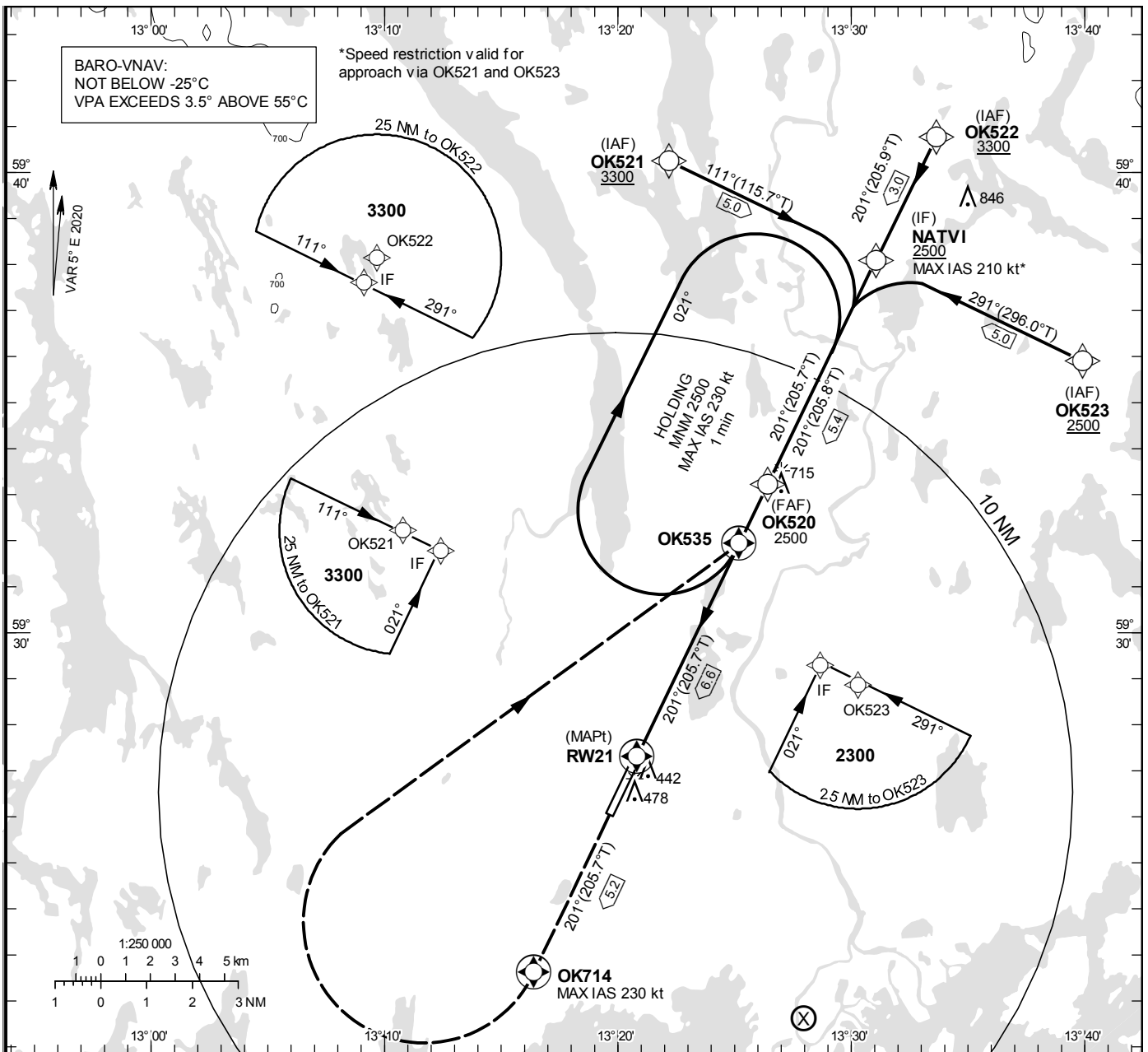
**INSTRUMENT
APPROACH
CHART – ICAO**

THR ELEV 352.9 ft, AD ELEV 353 ft
 OCH are related to THR.
 BRG are MAG (True).
 ALT, HGT and ELEV in ft.

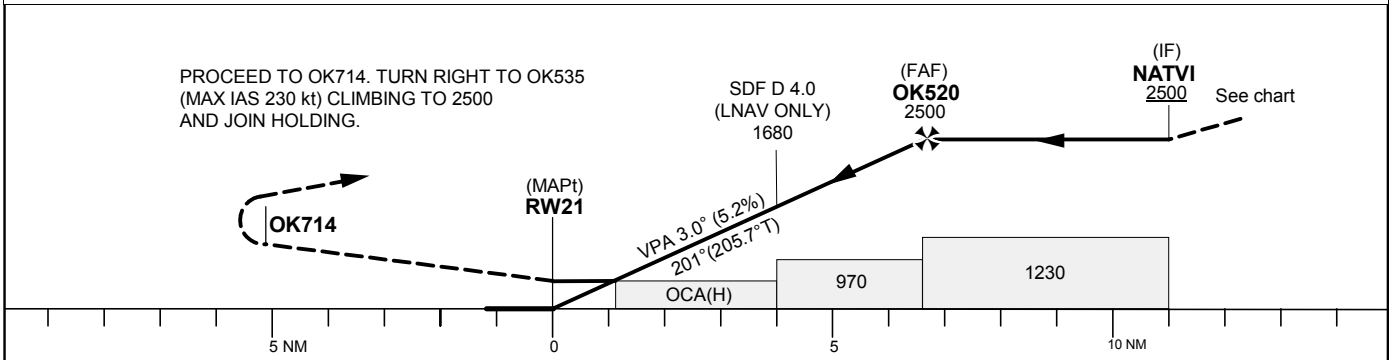
KARLSTAD TOWER 119.455

RNP RWY 21

EGNOS Ch 84561 E 21A



TA 5000 ft AMSL RDH 50.0 ft



Cat of ACFT	OCA (H)				Final approach Dist to RW 21	Distance FAF-MAPt 6.6 NM						
	A	B	C	D		6	5	4	3	2	1	
LPV	608(255)	620(267)	628(275)	639(286)	ALT	2310	2000	1680	1360	1040	720	
LNAV/VNAV	580(230)	590(240)	600(250)	640(290)	GS	kt	80	100	120	140	160	180
LNAV	690(340)				Rate of descent	ft/min	425	530	635	745	850	955

RNP RWY 21 via OK521

Path Desc	Waypoint Identifier	Fly-over	Course °M(°T)	Dist (NM)	Turn Dir	Altitude	Speed	VPA/RDH	Rec Navaid	Navigation Specification
IF	OK521	-	-	-	-	+3300	-	-	-	RNP APCH
TF	NATVI	-	111°(115.7°)	5.0	-	+2500	-210	-	-	RNP APCH

RNP RWY 21 via OK522

Path Desc	Waypoint Identifier	Fly-over	Course °M(°T)	Dist (NM)	Turn Dir	Altitude	Speed	VPA/RDH	Rec Navaid	Navigation Specification
IF	OK522	-	-	-	-	+3300	-	-	-	RNP APCH
TF	NATVI	-	201°(205.9°)	3.0	-	+2500	-	-	-	RNP APCH

RNP RWY 21 via OK523

Path Desc	Waypoint Identifier	Fly-over	Course °M(°T)	Dist (NM)	Turn Dir	Altitude	Speed	VPA/RDH	Rec Navaid	Navigation Specification
IF	OK523	-	-	-	-	-	-	-	-	RNP APCH
TF	NATVI	-	291°(296.0°)	5.0	-	+2500	-210	-	-	RNP APCH

Path Desc	Waypoint Identifier	Fly-over	Course °M(°T)	Dist (NM)	Turn Dir	Altitude	Speed	VPA/RDH	Rec Navaid	Navigation Specification
IF	NATVI	-	-	-	-	+2500	-	-	-	RNP APCH
TF	OK520	-	201°(205.8°)	5.4	-	@2500	-	-	-	RNP APCH
TF	RW21	Y	201°(205.7°)	6.6	-	@403	-	-3.0/50	-	RNP APCH
TF	OK714	Y	201°(205.7°)	5.2	-	-	-230	-	-	RNP APCH
DF	OK535	-	-	-	R	+2500	-	-	-	RNP APCH
HM	OK535	Y	201°(205.7°)	-	R	+2500	-230	-	-	RNAV 1

FAS Data Block

RNP RWY 21

Input data

Operation Type	0
SBAS Provider	1
Airport Identifier	ESOK
Runway	21
Runway Direction	0
Approach Performance Designator	0
Route Indicator	
Reference Path Data Selector	0
Reference Path Identifier	E21A
LTP/FTP Latitude	592717.6200N
LTP/FTP Longitude	0132049.0800E
LTP/FTP Ellipsoidal Height (metres)	139.3
FPAP Latitude	592604.3300N
Delta FPAP Latitude (seconds)	-73.2900
FPAP Longitude	0131939.9400E
Delta FPAP Longitude (seconds)	-69.1400
Threshold Crossing Height	50.0
TCH Units Selector	0
Glidepath Angle (degrees)	3.00
Course Width (metres)	105.00
Length Offset (metres)	0
HAL (metres)	40.0
VAL (metres)	50.0

Output data

Data Block	10 0B 0F 13 05 15 00 00 01 31 32 05 E8 E8 83 19 70 57 BA 05 71 19 6C C3 FD D8 E3 FD F4 01 2C 01 64 00 C8 FA 1A 93 DA FA
Calculated CRC Value	1A93DAFA

Required Additional Data

ICAO Code	ES
LTP/FTP Orthometric Height (metres)	107.6
FPAP Orthometric Height (metres)	101.5