

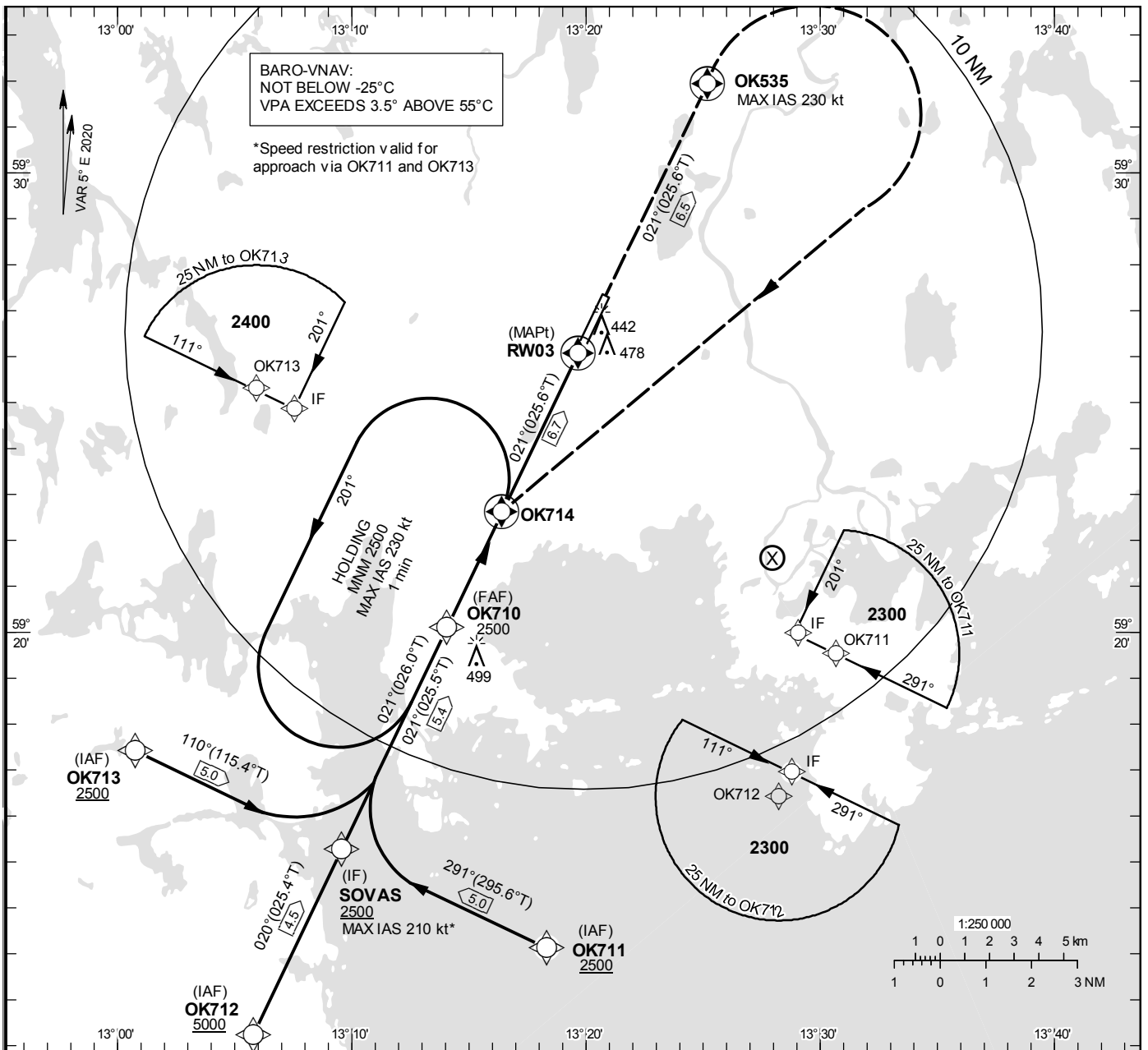
**INSTRUMENT  
APPROACH  
CHART – ICAO**

**THR ELEV 333.0 ft, AD ELEV 353 ft**  
 OCH are related to THR.  
 BRG are MAG (True).  
 ALT, HGT and ELEV in ft.

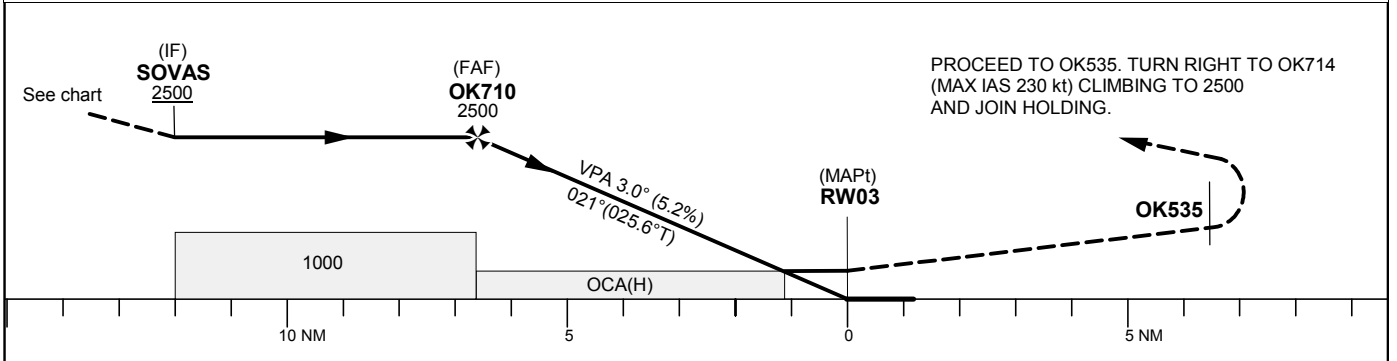
KARLSTAD TOWER 119.455

**RNP RWY 03**

EGNOS Ch 72324 E 03A



TA 5000 ft AMSL RDH 50.0 ft



Cat of ACFT	OCA (H)				Final approach Dist to RW 03	Distance FAF-MAPt 6.7 NM						
	A	B	C	D		6	5	4	3	2		
LPV	608(275)	620(287)	628(295)	639(306)	ALT	2290	1980	1660	1340	1020		
LNAV/VNAV	580(250)	590(260)	600(270)	640(310)	GS	kt	80	100	120	140	160	180
LNAV	680(350)				Rate of descent	ft/min	425	530	635	745	850	955

## RNP RWY 03 via OK711

Path Desc	Waypoint Identifier	Fly-over	Course °M(°T)	Dist (NM)	Turn Dir	Altitude	Speed	VPA/RDH	Rec Navaid	Navigation Specification
IF	OK711	-	-	-	-	-	-	-	-	RNP APCH
TF	SOVAS	-	291°(295.6°)	5.0	-	+2500	-210	-	-	RNP APCH

## RNP RWY 03 via OK712

Path Desc	Waypoint Identifier	Fly-over	Course °M(°T)	Dist (NM)	Turn Dir	Altitude	Speed	VPA/RDH	Rec Navaid	Navigation Specification
IF	OK712	-	-	-	-	+5000	-	-	-	RNP APCH
TF	SOVAS	-	020°(025.4°)	4.5	-	+2500	-	-	-	RNP APCH

## RNP RWY 03 via OK713

Path Desc	Waypoint Identifier	Fly-over	Course °M(°T)	Dist (NM)	Turn Dir	Altitude	Speed	VPA/RDH	Rec Navaid	Navigation Specification
IF	OK713	-	-	-	-	-	-	-	-	RNP APCH
TF	SOVAS	-	110°(115.4°)	5.0	-	+2500	-210	-	-	RNP APCH

Path Desc	Waypoint Identifier	Fly-over	Course °M(°T)	Dist (NM)	Turn Dir	Altitude	Speed	VPA/RDH	Rec Navaid	Navigation Specification
IF	SOVAS	-	-	-	-	+2500	-	-	-	RNP APCH
TF	OK710	-	021°(025.5°)	5.4	-	@2500	-	-	-	RNP APCH
TF	RW03	Y	021°(025.6°)	6.7	-	@383	-	-3.0/50	-	RNP APCH
TF	OK535	Y	021°(025.6°)	6.5	-	-	-230	-	-	RNP APCH
DF	OK714	-	-	-	R	+2500	-	-	-	RNP APCH
HM	OK714	Y	021°(026.0°)	-	L	+2500	-230	-	-	RNAV 1

## FAS Data Block

## RNP RWY 03

## Input data

Operation Type	0
SBAS Provider	1
Airport Identifier	ESOK
Runway	03
Runway Direction	0
Approach Performance Designator	0
Route Indicator	
Reference Path Data Selector	0
Reference Path Identifier	E03A
LTP/FTP Latitude	592604.3300N
LTP/FTP Longitude	0131939.9400E
LTP/FTP Ellipsoidal Height (metres)	133.2
FPAP Latitude	592717.6200N
Delta FPAP Latitude (seconds)	73.2900
FPAP Longitude	0132049.0800E
Delta FPAP Longitude (seconds)	69.1400
Threshold Crossing Height	50.0
TCH Units Selector	0
Glidepath Angle (degrees)	3.00
Course Width (metres)	105.00
Length Offset (metres)	0
HAL (metres)	40.0
VAL (metres)	50.0

## Output data

Data Block	10 0B 0F 13 05 03 00 00 01 33 30 05 54 AC 81 19 48 3B B8 05 34 19 94 3C 02 28 1C 02 F4 01 2C 01 64 00 C8 FA EA B6 A9 19
Calculated CRC Value	EAB6A919

## Required Additional Data

ICAO Code	ES
LTP/FTP Orthometric Height (metres)	101.5
FPAP Orthometric Height (metres)	107.6