

VISUAL APPROACH CHART - ICAO

1:250000



AD ELEV 542 FEET

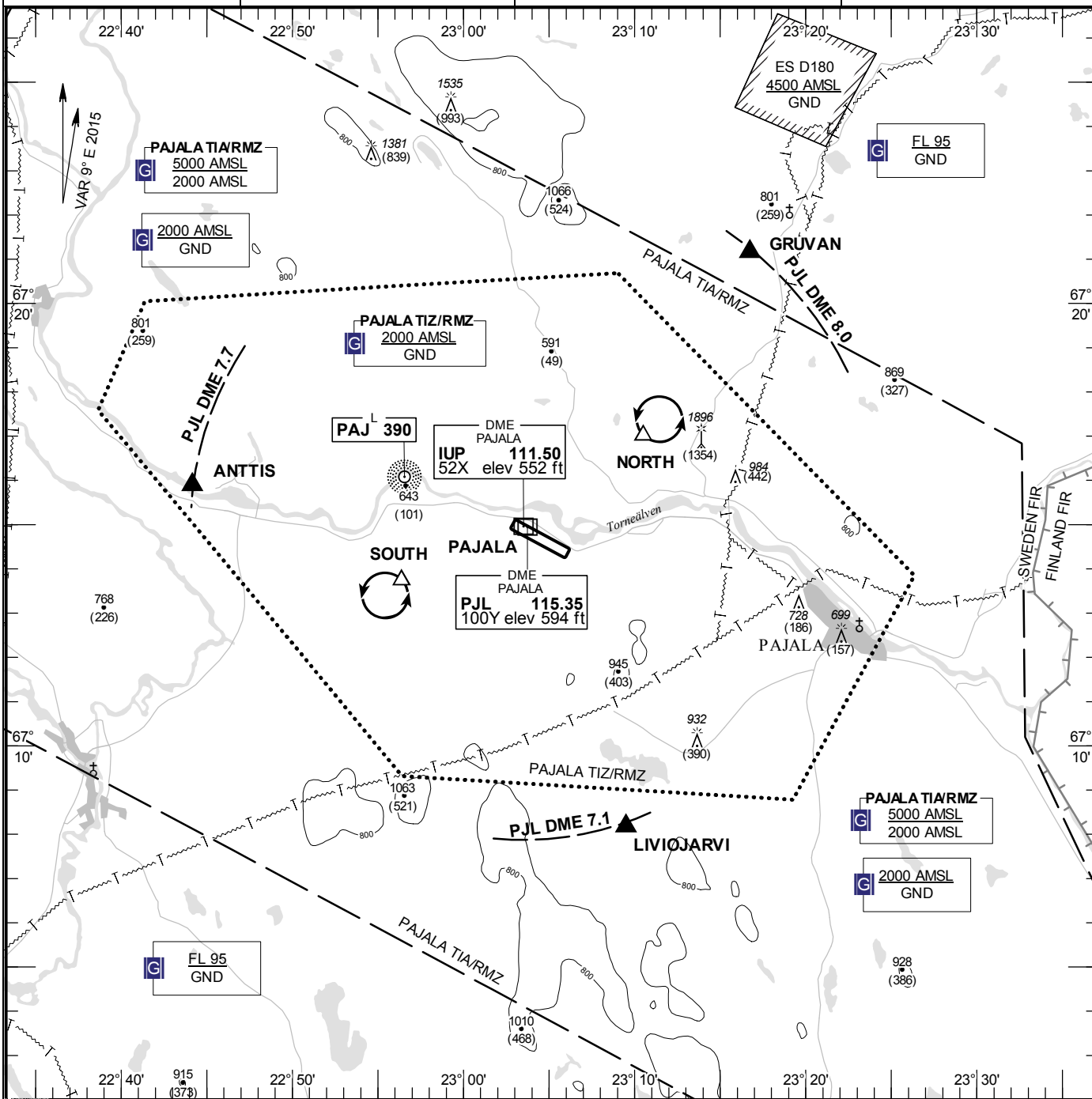
ELEV and ALT in ft
HGT in ft above AD ELEV

TA 5000 AMSL

PAJALA INFORMATION 118.380

AD 2 ESUP 6-1

PAJALA SWEDEN



Communication failure

- 1 SQUAWK 7600
- 2 Enter TIZ via GRUVAN – Holding NORTH or via LIVIOJARVI – Holding SOUTH at or below 1500 ft AMSL to traffic circuit. Transmit blind your intentions.
- 3 Flash LDG-lights.

RWY NR	THR ELEV	PAPI (MEHT)
11	540.5 ft	Left/3.00° (50 ft)
29	541 ft	Left/3.00° (50 ft)

Entry / exit point

GRUVAN	672109N 0231644E
LIVIOJARVI	670810N 0230930E
ANTTIS	671553N 0224409E

Holding

NORTH:	Hold north west of mast, north east of point 671659N 0231031E
SOUTH:	Hold over the swamp area, south west of point 671343N 0225622E

Remark

NIL

Legend

See GEN 2.3

Border crossing point (See AIP Finland)

KESUN	673501N 0233238E
KOLUP	671956N 0234600E
PELOP	664812N 0235911E

LFV

CHANGE: OBST

AIRAC AMDT 6/2020 **10 SEP 2020**