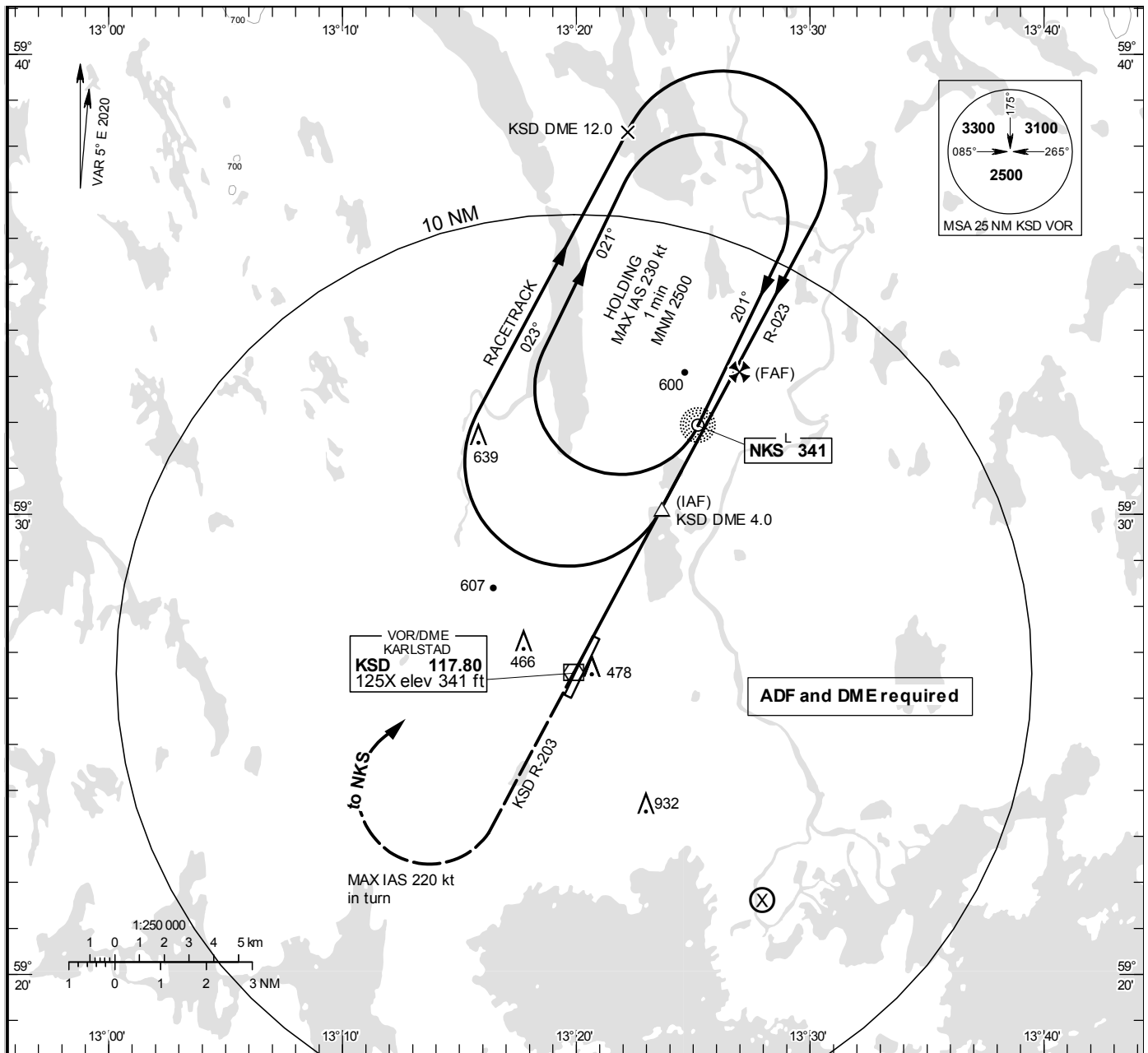


VOR RWY 21

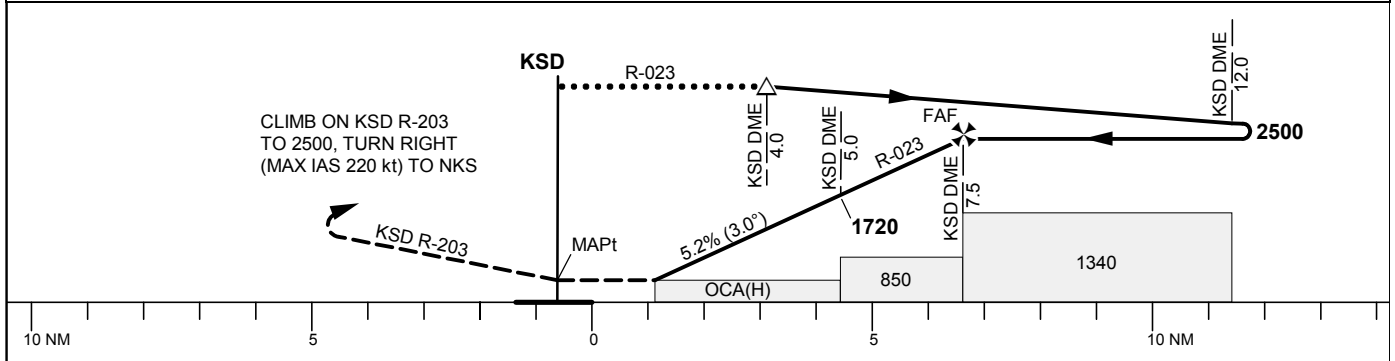
KARLSTAD TOWER 119.455

THR ELEV 352.9 ft, AD ELEV 353 ft  
 OCH are related to THR.  
 Circling OCH are related to AD ELEV.  
 BRG are MAG  
 ALT, HGT and ELEV in ft.

INSTRUMENT  
 APPROACH  
 CHART - ICAO



TA 5000 ft AMSL Circling MAX IAS 200 kt Final APCH line offset 2° \*Timing not authorized for defining the MAPt



Cat of ACFT	OCA (H)				Final approach							
	A	B	C	D	Distance FAF-MAPt 7.5 NM*							
Straight-in Approach	730(380)				DME KSD NM	7	6	5	4	3	2	
Circling	780(430)	910(560)	1330(980)	1330(980)	ALT	2360	2040	1720	1400	1080	760	
					GS	kt	80	100	120	140	160	180
					Time	min:s	4:35	3:40	3:03	2:37	2:17	2:02
					Rate of descent	ft/min	425	530	635	745	850	955