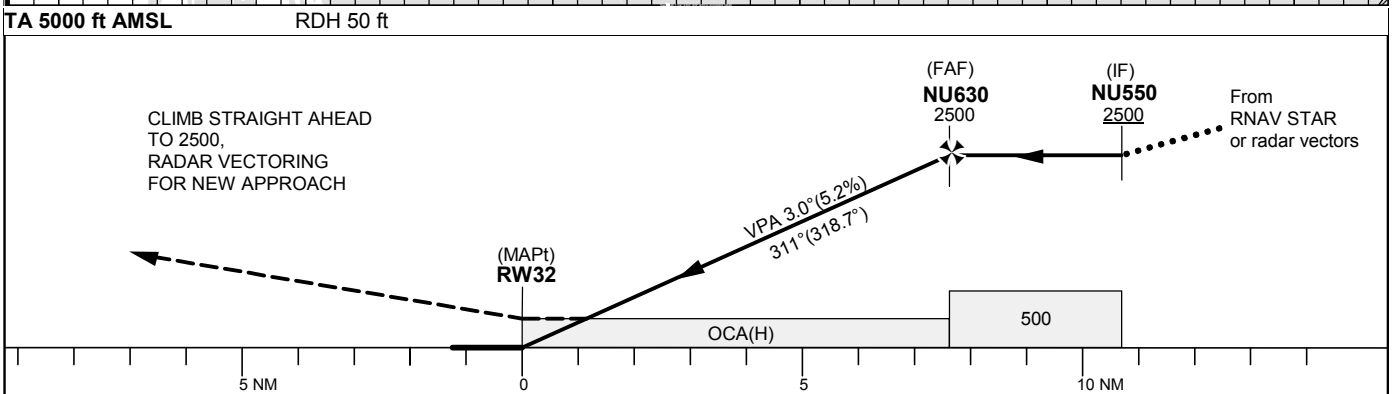
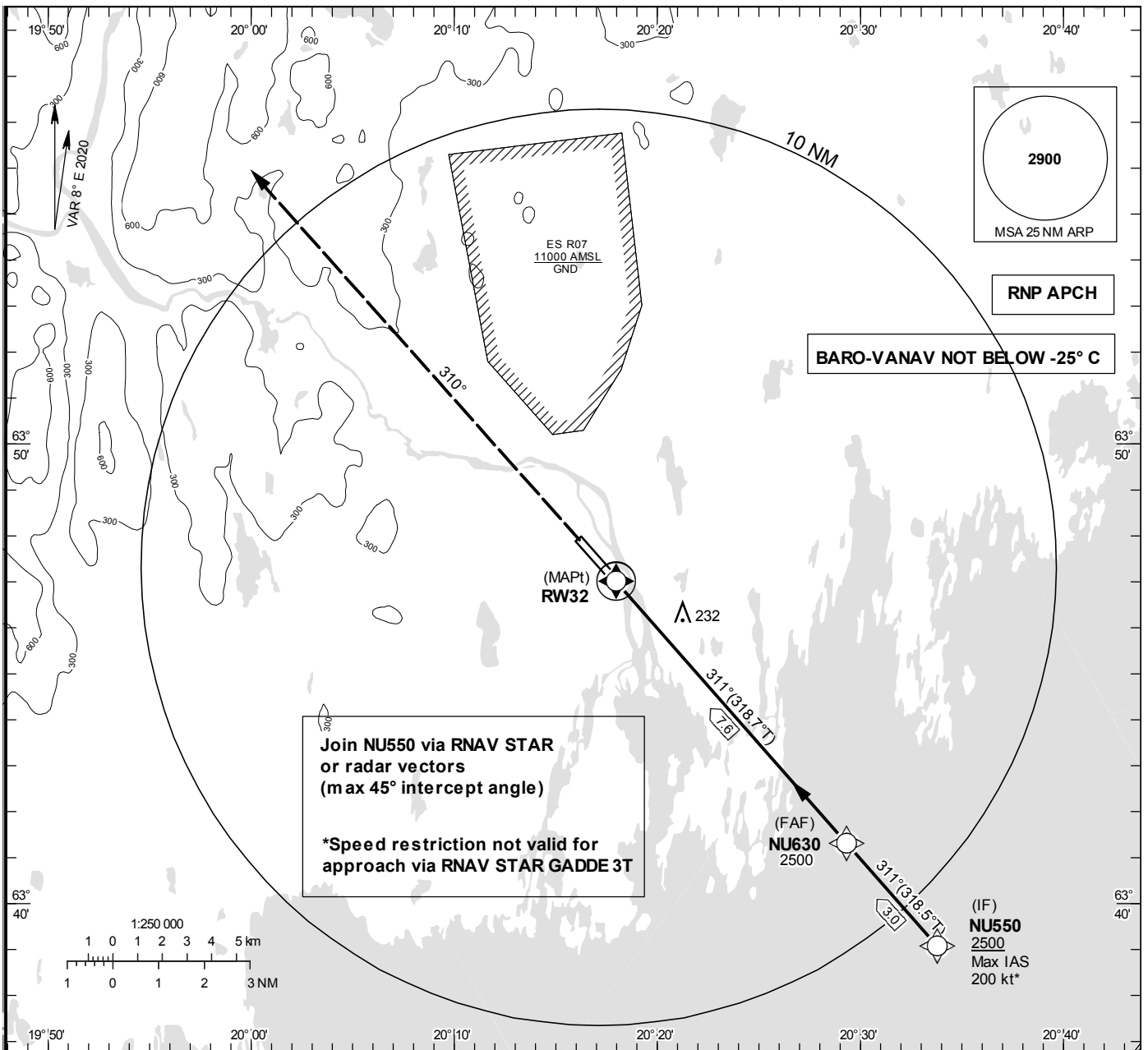


**INSTRUMENT  
APPROACH  
CHART – ICAO**

**THR ELEV 17.3 ft, AD ELEV 25 ft**  
 OCH are related to THR.  
 BRG are MAG (True).  
 ALT, HGT and ELEV in ft.

UMEÅ TOWER 119.805

RNP RWY 32



Cat of ACFT	OCA (H)				Final approach							
	A	B	C	D	Dist to RW 32	7	6	5	4	3	2	
LNAV/VNAV	370(360)	380(370)	390(380)	400(390)	ALT	2300	1980	1660	1340	1020	700	
LNAV	480(470)				GS	kt	80	100	120	140	160	180
					Rate of descent	ft/min	425	530	635	745	850	955

**RNP RWY 32 via RNAV STAR KETEL 3T/LENSO 3T or radar vectors**

Path Desc	Waypoint Identifier	Fly-over	Course °M(°T)	Dist (NM)	Turn Dir	Altitude	Speed	VPA/RDH	Rec Navaid	Navigation Specification
IF	NU550	-	-	-	-	+2500	-200	-	-	RNP APCH
TF	NU630	-	311°(318.5°)	3.0	-	@2500	-	-	-	RNP APCH
TF	RW32	Y	311°(318.7°)	7.6	-	@68	-	-3.0/50	-	RNP APCH
CA	-	-	310°(318.5°)	-	-	+2500	-	-	-	RNP APCH
VM	-	-	310°	-	-	-	-	-	-	RNP APCH

**RNP RWY 32 via RNAV STAR GADDE 3T**

Path Desc	Waypoint Identifier	Fly-over	Course °M(°T)	Dist (NM)	Turn Dir	Altitude	Speed	VPA/RDH	Rec Navaid	Navigation Specification
IF	NU550	-	-	-	-	+2500	-	-	-	RNP APCH
TF	NU630	-	311°(318.5°)	3.0	-	@2500	-	-	-	RNP APCH
TF	RW32	Y	311°(318.7°)	7.6	-	@68	-	-3.0/50	-	RNP APCH
CA	-	-	310°(318.5°)	-	-	+2500	-	-	-	RNP APCH
VM	-	-	310°	-	-	-	-	-	-	RNP APCH