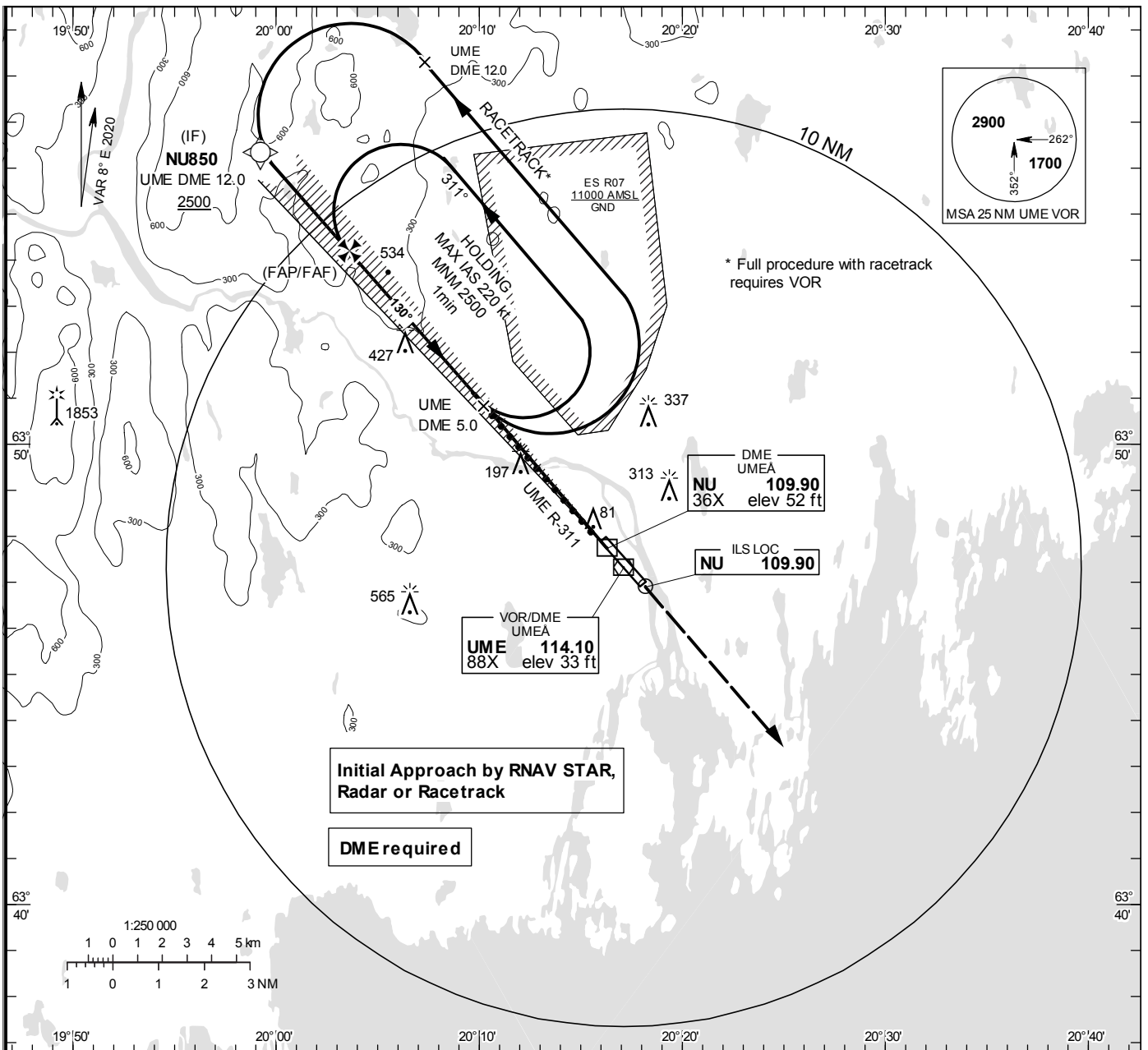


**INSTRUMENT  
 APPROACH  
 CHART – ICAO**

**THR ELEV 25.2 ft, AD ELEV 25 ft**  
 OCH are related to THR.  
 Circling OCH are related to AD ELEV.  
 BRG are MAG  
 ALT. HGT and ELEV in ft.

UMEA TOWER 119.805

**ILS or LOC RWY 14**



**TA 5000 ft AMSL**      **RDH 56.0 ft**      \*Timing not authorized for defining the MAPt

OM replaced by NU DME 4.0  
 MM replaced by NU DME 0.8

CLIMB STRAIGHT AHEAD TO 2500, RADAR VECTORING FOR A NEW INSTRUMENT APPROACH.

LOC FAF at NU DME 7.8 2500 NU DME 2.5 810 MAPt at NU DME 0.8 Descent grad 5.2%	(IF) <b>NU850</b> (UME DME 12.0) 2500				FAP/FAF		GP 3.0°		NU DME 4.0		R-311		DME NU UME		
	1660		760		1300		130°		280		NU DME 0.8		OCA(H)		
15 NM      10      5      0      5 NM															
OCA (H)															
Cat of ACFT					Final approach		LOC Distance FAF-MAPt 7.0 NM*								
					DME NU NM		7	6	5	4	3	2			
Straight-in Approach					ALT		2255	1937	1618	1300	981	663			
					GS		kt	80	100	120	140	160	180		
					Time		min:s	5:15	4:12	3:30	3:00	2:37	2:20		
Circling					Rate of descent		ft/min	425	530	635	745	850	955		