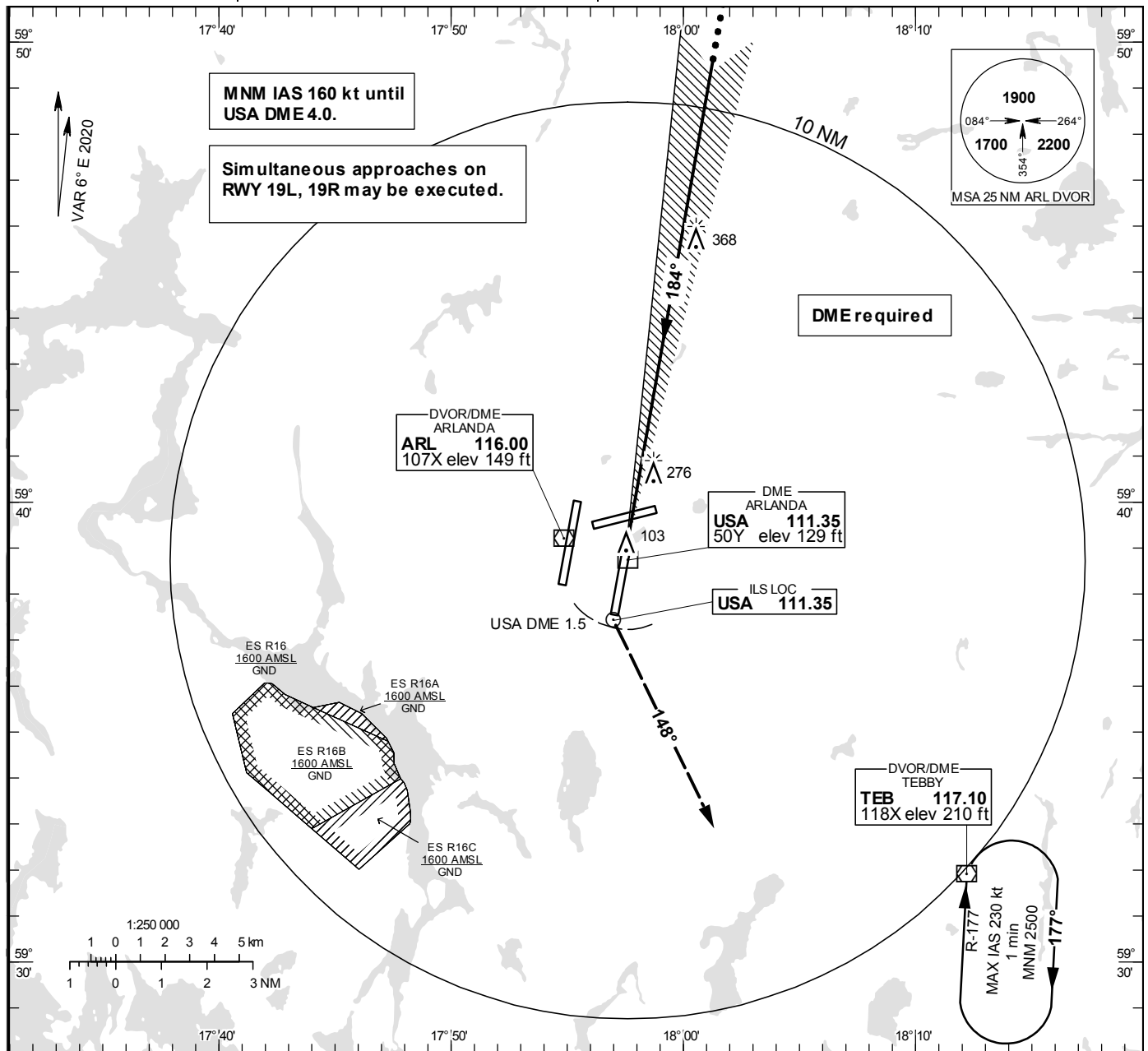


ILS or LOC RWY 19L

ARLANDA TOWER 125.130/
118.505/128.730
ARLANDA ATIS ARR 119.005
STOCKHOLM CONTROL 123.755

THR ELEV 98.9 ft, AD ELEV 138 ft
OCH are related to THR.
Circling OCH are related to AD ELEV.
BRG are MAG
ALT. HGT and ELEV in ft.

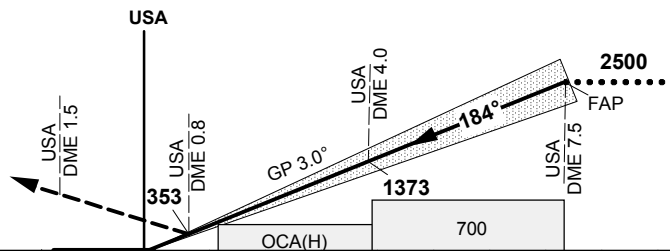
INSTRUMENT
APPROACH
CHART – ICAO



TA 5000 ft AMSL RDH 50.9 ft Special Com Failure procedures see ESSA AD 2.22 *Timing not authorized for defining the MAPt

OM replaced by USA DME 4.0
MM replaced by USA DME 0.8

CLIMB STRAIGHT AHEAD.
AT 600 OR USA DME 1.5
(PAST USA DME), WHICHEVER
IS LATEST,
TURN LEFT TO TRACK 148°
CLIMBING TO 1500,
RADAR VECTORED FOR
A NEW APPROACH.



OCA (H)						Final approach						LOC Distance FAF-MAPt 6.7 NM*								
Cat of ACFT	A	B	C	D	DL	DME USA NM	7	6	5	4	3	2	DME USA NM	7	6	5	4	3	2	
Straight-in Approach	Cat I	246(147)	259(160)	272(173)	284(185)	287(188)	ALT	2328	2009	1691	1373	1054	736	2328	2009	1691	1373	1054	736	
	Cat II	156(57)	176(77)	191(92)	203(104)	204(105)	GS	kt	80	100	120	140	160	180	80	100	120	140	160	180
	LOC	560 (460)					Time	min:s	5:04	4:03	3:23	2:54	2:32	2:15	5:04	4:03	3:23	2:54	2:32	2:15
Cat III B Approved						Rate of descent	ft/min	425	530	635	745	850	955	425	530	635	745	850	955	