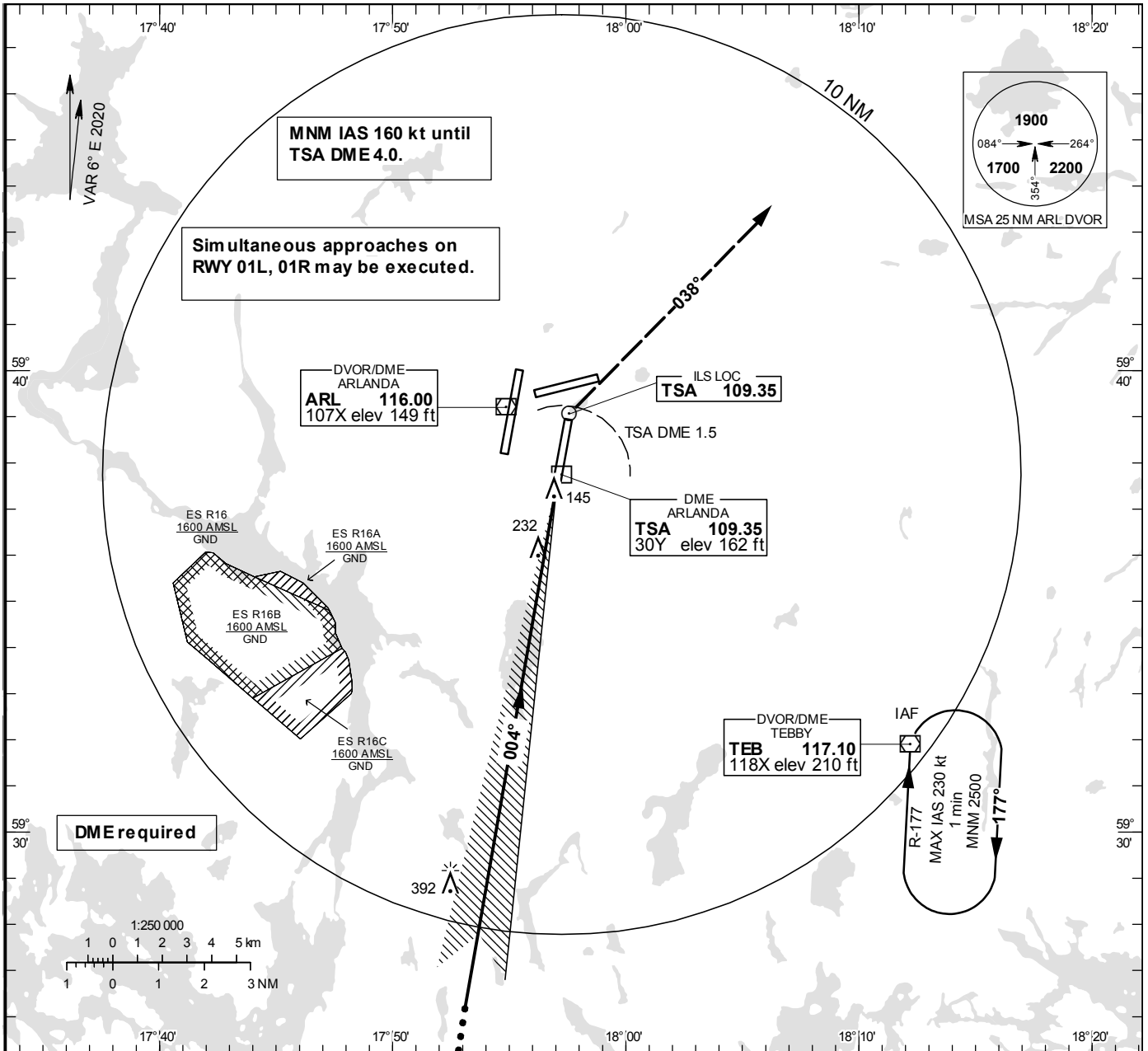


INSTRUMENT APPROACH CHART – ICAO

THR ELEV 138.0 ft, AD ELEV 138 ft
OCH are related to THR.
Circling OCH are related to AD ELEV.
BRG are MAG
ALT, HGT and ELEV in ft.

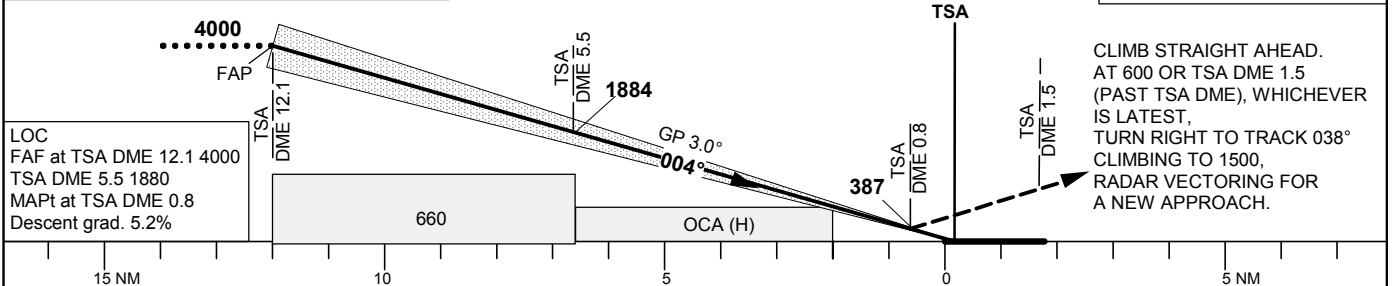
ARLANDA TOWER 125.130/
118.505/128.730
ARLANDA ATIS ARR 119.005
STOCKHOLM CONTROL 123.755

ILS or LOC RWY 01R



TA 5000 ft AMSL RDH 50.9 ft * Timing not authorized for defining the MAPt

Special Com Failure Procedures see ESSA AD 2.22
Com Failure Chart see AD 2 ESSA 5-7
OM replaced by TSA DME 5.5
MM replaced by TSA DME 0.8



OCA (H)						Final approach LOC Distance FAF-MAPt 11.3 NM*							
Cat of ACFT	A	B	C	D	DL	DME TSA NM	11	10	9	8	7		
Straight-in Approach	Cat I	285 (147)	298 (160)	309 (171)	320 (182)	322 (184)	6	5	4	3	2		
	Cat II	193 (55)	219 (81)	233 (95)	244 (106)	245 (107)	2043	1724	1406	1087	769		
	LOC	490 (350)					GS	kt	80	100	120	140	160
Cat III B Approved						Time	min:s	8:31	6:49	5:40	4:52	4:15	3:47
						Rate of descent	ft/min	425	530	635	745	850	955