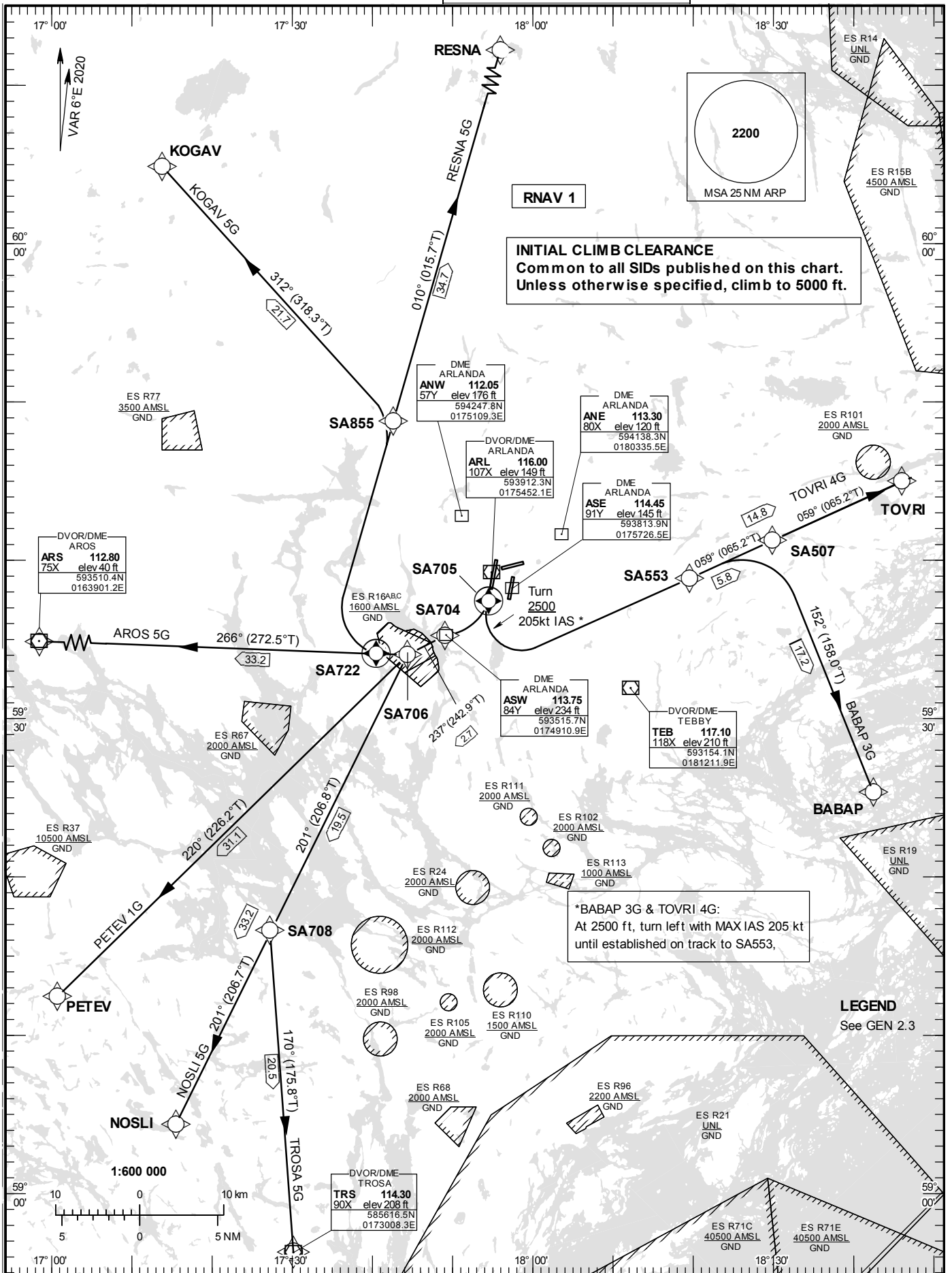


STANDARD INSTRUMENT
DEPARTURE CHART (SID) -
ICAO

HGT and ALT in ft
BRG are MAG (True)
TA 5000 ft AMSL

ARLANDA TOWER	118.505
ARLANDA ATIS DEP	121.630
STOCKHOLM CONTROL	123.755

RNAV(DME/DME or GNSS)
SID RWY 19R



INITIAL CLIMB CLEARANCE
Common to all SIDs published on this chart.
Unless otherwise specified, climb to 5000 ft.

*BABAP 3G & TOVRI 4G:
At 2500 ft, turn left with MAX IAS 205 kt
until established on track to SA553,

LEGEND
See GEN 2.3

Prescribed Coding of RNAV SID for RWY 19R**Notes:**

INITIAL CLIMB CLEARANCE: Climb to 5000 ft unless otherwise specified. Common to all SIDs published on charts.

Aircraft proceeding on RNAV SID shall use 400 ft/NM (6.6%) as a minimum gradient of climb up to 5000 ft AMSL.
Aircraft unable to conform with this procedure shall inform ATC accordingly.

Aircraft from STOCKHOLM/Arlanda shall not be operated at an airspeed of more than 250 kt IAS below FL 100 unless otherwise instructed.

Contact Frequency: Contact STOCKHOLM CONTROL, when so instructed by TWR, on channel indicated below.

AROS 5G

Path Term	Waypoint Identifier	Fly-over	Course °M(°T)	Dist (NM)	Turn Dir	Rest Alts (ft AMSL)	Speed Limits (kt)	VPA/RDH (°/ft)	Rec Navaid	Navigation Specification
CF	SA705	Y	184°(190.4°)	0.8	-	-	-	-	ARL	RNAV 1
DF	SA704	-	-	-	R	+2100	-220	-	-	RNAV 1
TF	SA706	-	237° (242.9°)	2.7	-	-	-	-	-	RNAV 1
TF	ARS	-	266° (272.5°)	33.2	-	-	-	-	-	RNAV 1

SID instruction: Climb on track 184° to SA705 – SA704 (MNM 2100 ft, max IAS 220 kt) – SA706 – ARS **124.105 MHz**
(MNM climb gradient 7.6% (460 ft/NM) until SA704)

ACFT unable to follow RNAV SID: Report "unable RNAV SID due RNAV type" to Clearance Delivery and "unable RNAV SID" to Stockholm Control at first contact.
Climb on track 184° to ARL DME 2. Turn right to track 239° (max IAS 220 kt in turn) and continue climb to MNM 2100 ft at ARL DME 5.0 Expect radar vectors to ARS.
(MNM climb gradient 7.6% (460 ft/NM) until ARL DME 5.0)

BABAP 3G

Path Term	Waypoint Identifier	Fly-over	Course °M(°T)	Dist (NM)	Turn Dir	Rest Alts (ft AMSL)	Speed Limits (kt)	VPA/RDH (°/ft)	Rec Navaid	Navigation Specification
CF	SA705	Y	184°(190.4°)	0.8	-	-	-	-	ARL	RNAV 1
CA	-	-	178°(184.0°)	-	-	+2500	-205	-	-	RNAV 1
DF	SA553	-	-	-	L	-	-	-	-	RNAV 1
TF	SA507	-	059°(065.2°)	5.8	-	-	-	-	-	RNAV 1
TF	BABAP	-	152°(158.0°)	17.2	R	-	-	-	-	RNAV 1

SID instruction: Climb on track 184° to SA705. Turn left to track 178°. At or above 2500 ft turn left direct to SA553 (max IAS 205 kt until established on track to SA553) – SA507 – BABAP. **130.330 MHz**

ACFT unable to follow RNAV SID: Report "unable RNAV SID due RNAV type" to Clearance Delivery and "unable RNAV SID" to Stockholm Control at first contact.
Climb on track 184° to ARL DME 2. Turn left to track 178°. At or above 2500 ft turn left to track 060°(max IAS 205 kt). Expect radar vectors to BABAP.

KOGAV 5G

Path Term	Waypoint Identifier	Fly-over	Course °M(°T)	Dist (NM)	Turn Dir	Rest Alts (ft AMSL)	Speed Limits (kt)	VPA/RDH (°/ft)	Rec Navaid	Navigation Specification
CF	SA705	Y	184°(190.4°)	0.8	-	-	-	-	ARL	RNAV 1
DF	SA704	-	-	-	R	+2100	-220	-	-	RNAV 1
TF	SA706	-	237°(242.9°)	2.7	-	-	-	-	-	RNAV 1
CF	SA722	Y	266°(271.7°)	2.0	-	-	-	-	ARL	RNAV 1
DF	SA855	-	-	-	R	-	-	-	-	RNAV 1
TF	KOGAV	-	312°(318.3°)	21.7	L	-	-	-	-	RNAV 1

SID instruction: Climb on track 184° to SA705 – SA704 (MNM 2100 ft, max IAS 220 kt) – SA706 – SA722 – SA855– KOGAV (MNM climb gradient 7.6% (460 ft/NM) until SA704) **124.105 MHz**

ACFT unable to follow RNAV SID: Report "unable RNAV SID due RNAV type" to Clearance Delivery and "unable RNAV SID" to Stockholm Control at first contact.
Climb on track 184° to ARL DME 2. Turn right to track 239° (max IAS 220 kt in turn) and continue climb to MNM 2100 ft at ARL DME 5.0. Expect radar vectors to KOGAV. (MNM climb gradient 7.6% (460 ft/NM) until ARL DME 5.0)

NOSLI 5G

Path Term	Waypoint Identifier	Fly-over	Course °M(°T)	Dist (NM)	Turn Dir	Rest Alts (ft AMSL)	Speed Limits (kt)	VPA/RDH (°/ft)	Rec Navaid	Navigation Specification
CF	SA705	Y	184°(190.4°)	0.8	-	-	-	-	ARL	RNAV 1
DF	SA704	-	-	-	R	+2100	-220	-	-	RNAV 1
TF	SA706	-	237°(242.9°)	2.7	-	-	-	-	-	RNAV 1
TF	NOSLI	-	201°(206.7°)	33.2	-	-	-	-	-	RNAV 1

SID instruction: Climb on track 184° to SA705 – SA704 (MNM 2100 ft, max IAS 220 kt) – SA706 – NOSLI (MNM climb gradient 7.6% (460 ft/NM) until SA704) **124.105 MHz**

ACFT unable to follow RNAV SID: Report "unable RNAV SID due RNAV type" to Clearance Delivery and "unable RNAV SID" to Stockholm Control at first contact.
Climb on track 184° to ARL DME 2. Turn right to track 239° (max IAS 220 kt in turn) and continue climb to MNM 2100 ft at ARL DME 5.0. Expect radar vectors to NOSLI. (MNM climb gradient 7.6% (460 ft/NM) until ARL DME 5.0)

PETEV 1G

Path Term	Waypoint Identifier	Fly-over	Course °M(°T)	Dist (NM)	Turn Dir	Rest Alts (ft AMSL)	Speed Limits (kt)	VPA/RDH (°/ft)	Rec Navaid	Navigation Specification
CF	SA705	Y	184°(190.4°)	0.8	-	-	-	-	ARL	RNAV 1
DF	SA704	-	-	-	R	+2100	-220	-	-	RNAV 1
TF	SA706	-	237°(242.9°)	2.7	-	-	-	-	-	RNAV 1
TF	PETEV	-	220°(226.2°)	31.1	-	-	-	-	-	RNAV 1

SID instruction: Climb on track 184° to SA705 – SA704 (MNM 2100 ft, max IAS 220 kt) – SA706 – PETEV (MNM climb gradient 7.6% (460 ft/NM) until SA704) **124.105 MHz**

ACFT unable to follow RNAV SID: Report "unable RNAV SID due RNAV type" to Clearance Delivery and "unable RNAV SID" to Stockholm Control at first contact.
Climb on track 184° to ARL DME 2. Turn right to track 239° (max IAS 220 kt in turn) and continue climb to MNM 2100 ft at ARL DME 5.0. Expect radar vectors to PETEV. (MNM climb gradient 7.6% (460 ft/NM) until ARL DME 5.0)

RESNA 5G

Path Term	Waypoint Identifier	Fly-over	Course °M(°T)	Dist (NM)	Turn Dir	Rest Alts (ft AMSL)	Speed Limits (kt)	VPA/RDH (°/ft)	Rec Navaid	Navigation Specification
CF	SA705	Y	184°(190.4°)	0.8	-	-	-	-	ARL	RNAV 1
DF	SA704	-	-	-	R	+2100	-220	-	-	RNAV 1
TF	SA706	-	237°(242.9°)	2.7	-	-	-	-	-	RNAV 1
CF	SA722	Y	266°(271.7°)	2.0	-	-	-	-	ARL	RNAV 1
DF	SA855	-	-	-	R	-	-	-	-	RNAV 1
TF	RESNA	-	010°(015.7°)	34.7	-	-	-	-	-	RNAV 1

SID instruction: Climb on track 184° to SA705 – SA704 (MNM 2100 ft, max IAS 220 kt) – SA706 – SA722 – SA855 – RESNA (MNM climb gradient 7.6% (460 ft/NM) until SA704) **124.105 MHz**

ACFT unable to follow RNAV SID: Report "unable RNAV SID due RNAV type" to Clearance Delivery and "unable RNAV SID" to Stockholm Control at first contact.
Climb on track 184° to ARL DME 2. Turn right to track 239° (max IAS 220 kt in turn) and continue climb to MNM 2100 ft at ARL DME 5.0. Expect radar vectors to RESNA. (MNM climb gradient 7.6% (460 ft/NM) until ARL DME 5.0)

TOVRI 4G

Path Term	Waypoint Identifier	Fly-over	Course °M(°T)	Dist (NM)	Turn Dir	Rest Alts (ft AMSL)	Speed Limits (kt)	VPA/RDH (°/ft)	Rec Navaid	Navigation Specification
CF	SA705	Y	184°(190.4°)	0.8	-	-	-	-	ARL	RNAV 1
CA	-	-	178°(184.0°)	-	-	+2500	-205	-	-	RNAV 1
DF	SA553	-	-	-	L	-	-	-	-	RNAV 1
TF	TOVRI	-	059°(065.2°)	14.8	-	-	-	-	-	RNAV 1

SID instruction: Climb on track 184° to SA705. Turn left to track 178°. At or above 2500 ft turn left direct to SA553 (max IAS 205 kt until established on track to SA553) – TOVRI. **130.330 MHz**

ACFT unable to follow RNAV SID: Report "unable RNAV SID due RNAV type" to Clearance Delivery and "unable RNAV SID" to Stockholm Control at first contact.
Climb on track 184° to ARL DME 2. Turn left to track 178°. At or above 2500 ft turn left to track 060° (max IAS 205 kt). Expect radar vectors to TOVRI.

TROSA 5G

Path Term	Waypoint Identifier	Fly-over	Course °M(°T)	Dist (NM)	Turn Dir	Rest Alts (ft AMSL)	Speed Limits (kt)	VPA/RDH (°/ft)	Rec Navaid	Navigation Specification
CF	SA705	Y	184°(190.4°)	0.8	-	-	-	-	ARL	RNAV 1
DF	SA704	-	-	-	R	+2100	-220	-	-	RNAV 1
TF	SA706	-	237°(242.9°)	2.7	-	-	-	-	-	RNAV 1
TF	SA708	-	201°(206.8°)	19.5	-	-	-	-	-	RNAV 1
TF	TRS	-	170°(175.8°)	20.5	-	-	-	-	-	RNAV 1

SID instruction: Climb on track 184° to SA705 – SA704 (MNM 2100 ft, max IAS 220 kt) – SA706 – SA708 - TRS (MNM climb gradient 7.6% (460 ft/NM) until SA704) **124.105 MHz**

ACFT unable to follow RNAV SID: Report "unable RNAV SID due RNAV type" to Clearance Delivery and "unable RNAV SID" to Stockholm Control at first contact.
Climb on track 184° to ARL DME 2. Turn right to track 239° (max IAS 220 kt in turn) and continue climb to MNM 2100 ft at ARL DME 5.0. Expect radar vectors to TRS. (MNM climb gradient 7.6% (460 ft/NM) until ARL DME 5.0)