

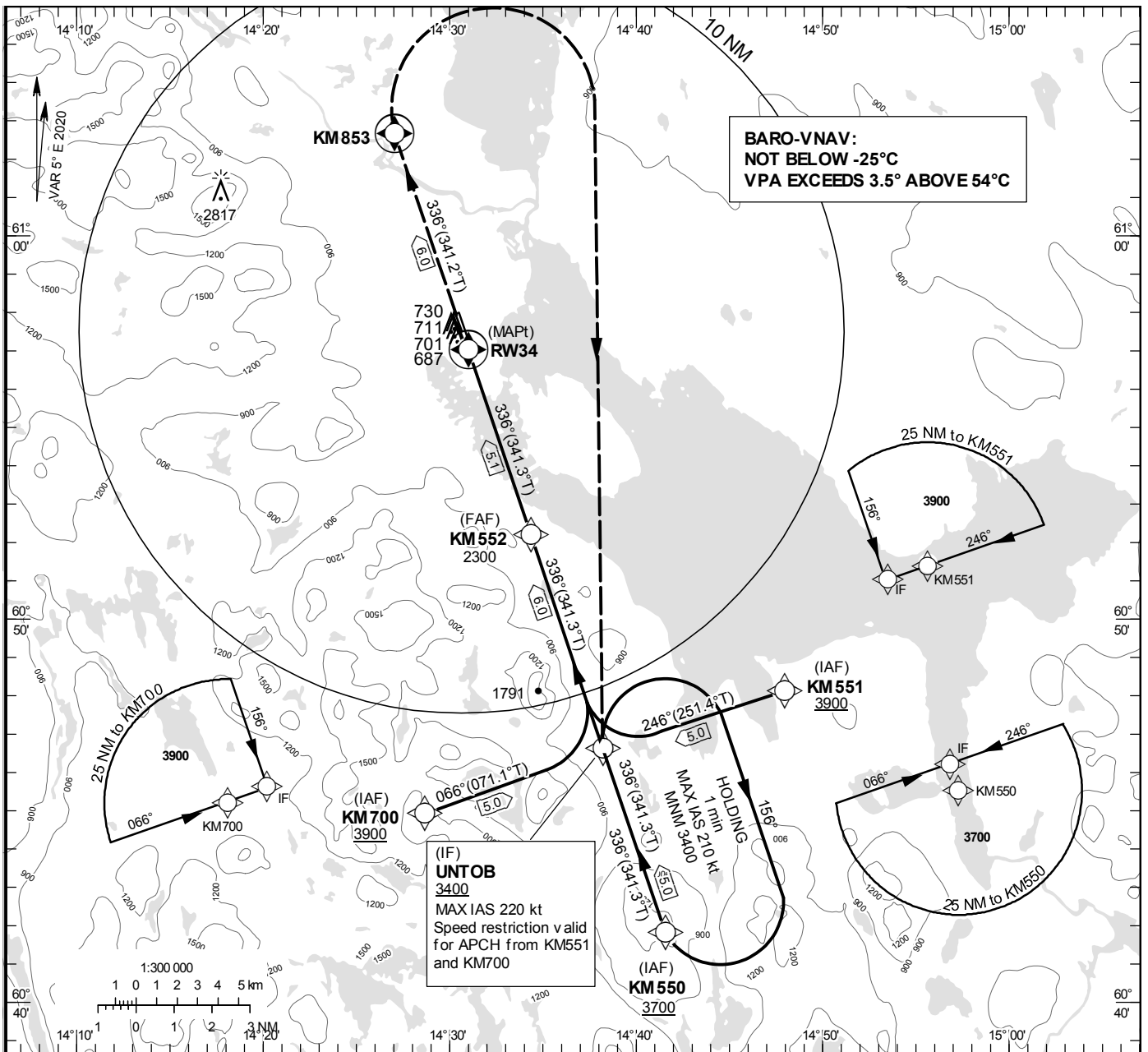
**INSTRUMENT
APPROACH
CHART – ICAO**

THR ELEV 618 ft, AD ELEV 635 ft
OCH are related to THR.
BRG are MAG (True).
ALT, HGT and ELEV in ft.

MORA INFORMATION 119.055

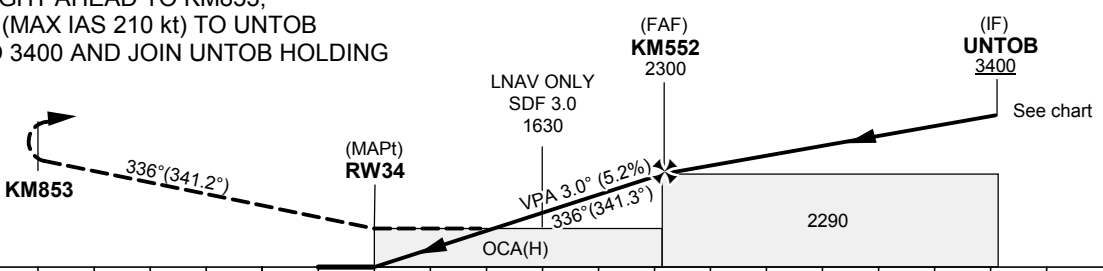
RNP RWY 34

EGNOS Ch 60007 E 34A



TA 5000 ft AMSL RDH 50.0 ft Note: PAPI (3.7°) not aligned with procedure (3.0°)

CLIMB STRAIGHT AHEAD TO KM853,
TURN RIGHT (MAX IAS 210 kt) TO UNTOB
CLIMBING TO 3400 AND JOIN UNTOB HOLDING



Cat of ACFT	OCA (H)				Final approach Dist to RW34 (NM)	Distance FAF-MAPT 5.1 NM						
	A	B	C	D		5	4	3	2	1		
LPV	860(242)	872(254)	880(262)	891(273)	ALT	2260	1940	1620	1300	990		
LNAV/VNAV	840(230)	850(240)	870(260)	900(290)	GS	kt	80	100	120	140	160	180
LNAV	940(330)				Rate of descent	ft/min	425	530	635	745	850	955

RNP RWY 34 via KM550

Path Desc	Waypoint Identifier	Fly-over	Course °M(°T)	Dist (NM)	Turn Dir	Altitude	Speed	VPA/RDH	Rec Navaid	Navigation Specification
IF	KM550	-	-	-	-	+3700	-	-	-	RNP APCH
TF	UNTOB	-	336°(341.3°)	5.0	-	+3400	-	-	-	RNP APCH

RNP RWY 34 via KM700

Path Desc	Waypoint Identifier	Fly-over	Course °M(°T)	Dist (NM)	Turn Dir	Altitude	Speed	VPA/RDH	Rec Navaid	Navigation Specification
IF	KM700	-	-	-	-	+3900	-	-	-	RNP APCH
TF	UNTOB	-	066°(071.1°)	5.0	-	+3400	-220	-	-	RNP APCH

RNP RWY 34 via KM551

Path Desc	Waypoint Identifier	Fly-over	Course °M(°T)	Dist (NM)	Turn Dir	Altitude	Speed	VPA/RDH	Rec Navaid	Navigation Specification
IF	KM551	-	-	-	-	+3900	-	-	-	RNP APCH
TF	UNTOB	-	246°(251.4°)	5.0	-	+3400	-220	-	-	RNP APCH

Path Desc	Waypoint Identifier	Fly-over	Course °M(°T)	Dist (NM)	Turn Dir	Altitude	Speed	VPA/RDH	Rec Navaid	Navigation Specification
IF	UNTOB	-	-	-	-	+3400	-	-	-	RNP APCH
TF	KM552	-	336°(341.3°)	6.0	-	@2300	-	-	-	RNP APCH
TF	RW34	Y	336°(341.3°)	5.1	-	@668	-	-3.0/50	-	RNP APCH
TF	KM853	Y	336°(341.2°)	6.0	-	-	-	-	-	RNP APCH
DF	UNTOB	Y	-	-	R	+3400	-210	-	-	RNP APCH
HM	UNTOB	Y	336°(341.3°)	-	R	+3400	-210	-	-	RNAV 1

FAS Data Block

RNP RWY 34

Input data

Operation Type	0
SBAS Provider	1
Airport Identifier	ESKM
Runway	34
Runway Direction	0
Approach Performance Designator	0
Route Indicator	
Reference Path Data Selector	0
Reference Path Identifier	E34A
LTP/FTP Latitude	605700.7200N
LTP/FTP Longitude	0143100.3700E
LTP/FTP Ellipsoidal Height (metres)	219.5
FPAP Latitude	605756.2100N
Delta FPAP Latitude (seconds)	55.4900
FPAP Longitude	0143021.5700E
Delta FPAP Longitude (seconds)	-38.8000
Threshold Crossing Height	50.0
TCH Units Selector	0
Glidepath Angle (degrees)	3.00
Course Width (metres)	105.00
Length Offset (metres)	0
HAL (metres)	40.0
VAL (metres)	50.0

Output data

Data Block	10 0D 0B 13 05 22 00 00 01 34 33 05 60 30 28 1A 24 DC 3A 06 93 1C 84 B1 01 E0 D0 FE F4 01 2C 01 64 00 C8 FA 91 FA 00 C3
Calculated CRC Value	91FA00C3

Required Additional Data

ICAO Code	ES
LTP/FTP Orthometric Height (metres)	188.4
FPAP Orthometric Height (metres)	192.4