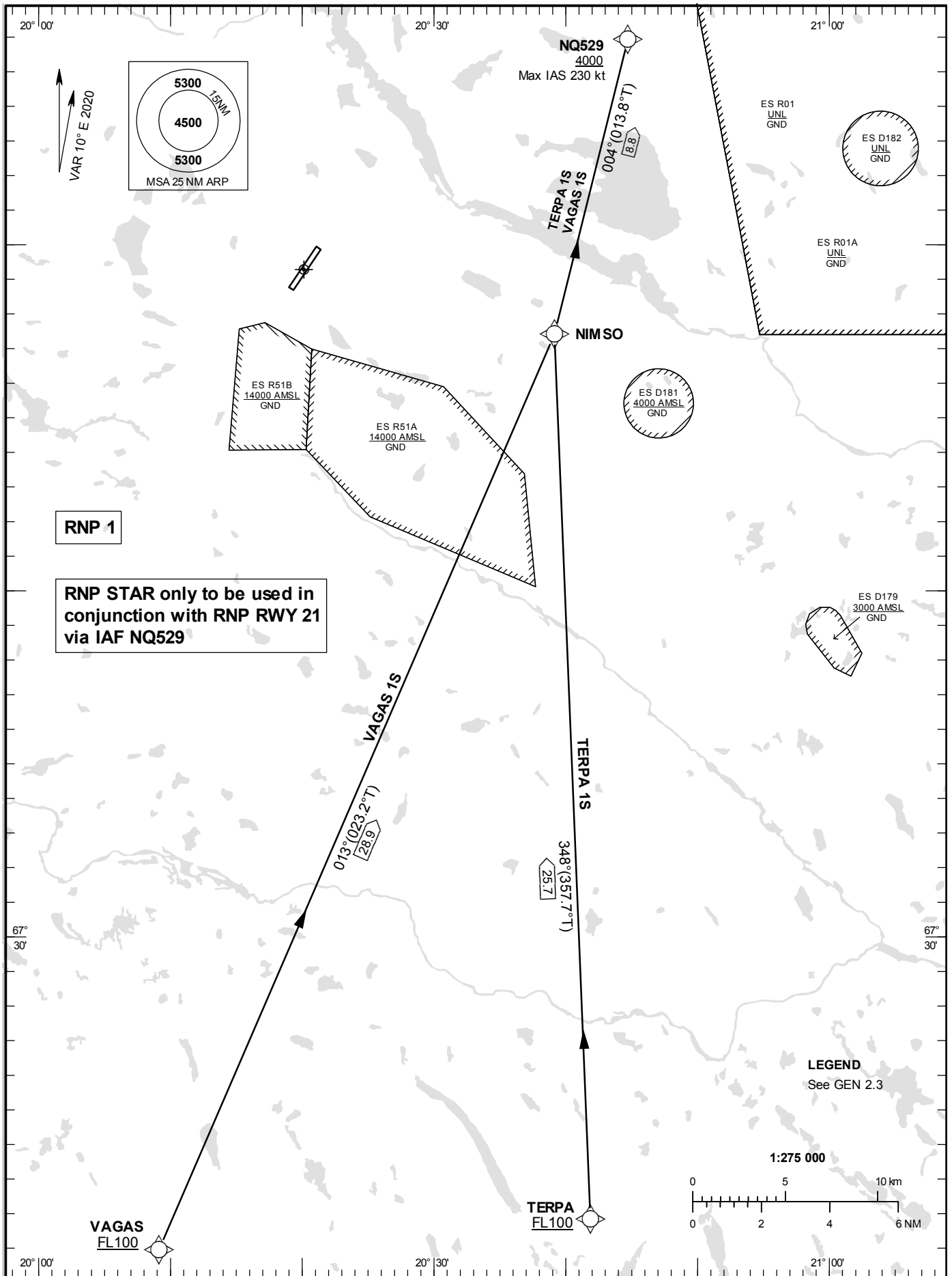


STANDARD INSTRUMENT
ARRIVAL CHART (STAR) -
ICAO

HGT and ALT in ft
BRG are MAG (True)
TA 6000 ft AMSL

KIRUNA TOWER 130.155

RNP STAR RWY 21



TERPA 1S

Path Desc	Waypoint Identifier	Fly-over	Course °M(°T)	Dist (NM)	Turn Dir	Altitude	Speed	VPA/RDH	Rec Navaid	Navigation Specification
IF	TERPA	-	-	-	-	+FL100	-	-	-	RNP 1
TF	NIMSO	-	348°(357.7°)	25.7	-	-	-	-	-	RNP 1
TF	NQ529	-	004°(013.8°)	8.8	-	+4000	-230	-	-	RNP 1

STAR instruction: TERPA (FL100 or above) – NIMSO – NQ529 (4000 ft or above, max IAS 230 kt)

VAGAS 1S

Path Desc	Waypoint Identifier	Fly-over	Course °M(°T)	Dist (NM)	Turn Dir	Altitude	Speed	VPA/RDH	Rec Navaid	Navigation Specification
IF	VAGAS	-	-	-	-	+FL100	-	-	-	RNP 1
TF	NIMSO	-	013°(023.2°)	28.9	-	-	-	-	-	RNP 1
TF	NQ529	-	004°(013.8°)	8.8	-	+4000	-230	-	-	RNP 1

STAR instruction: VAGAS (FL100 or above) – NIMSO – NQ529 (4000 ft or above, max IAS 230 kt)