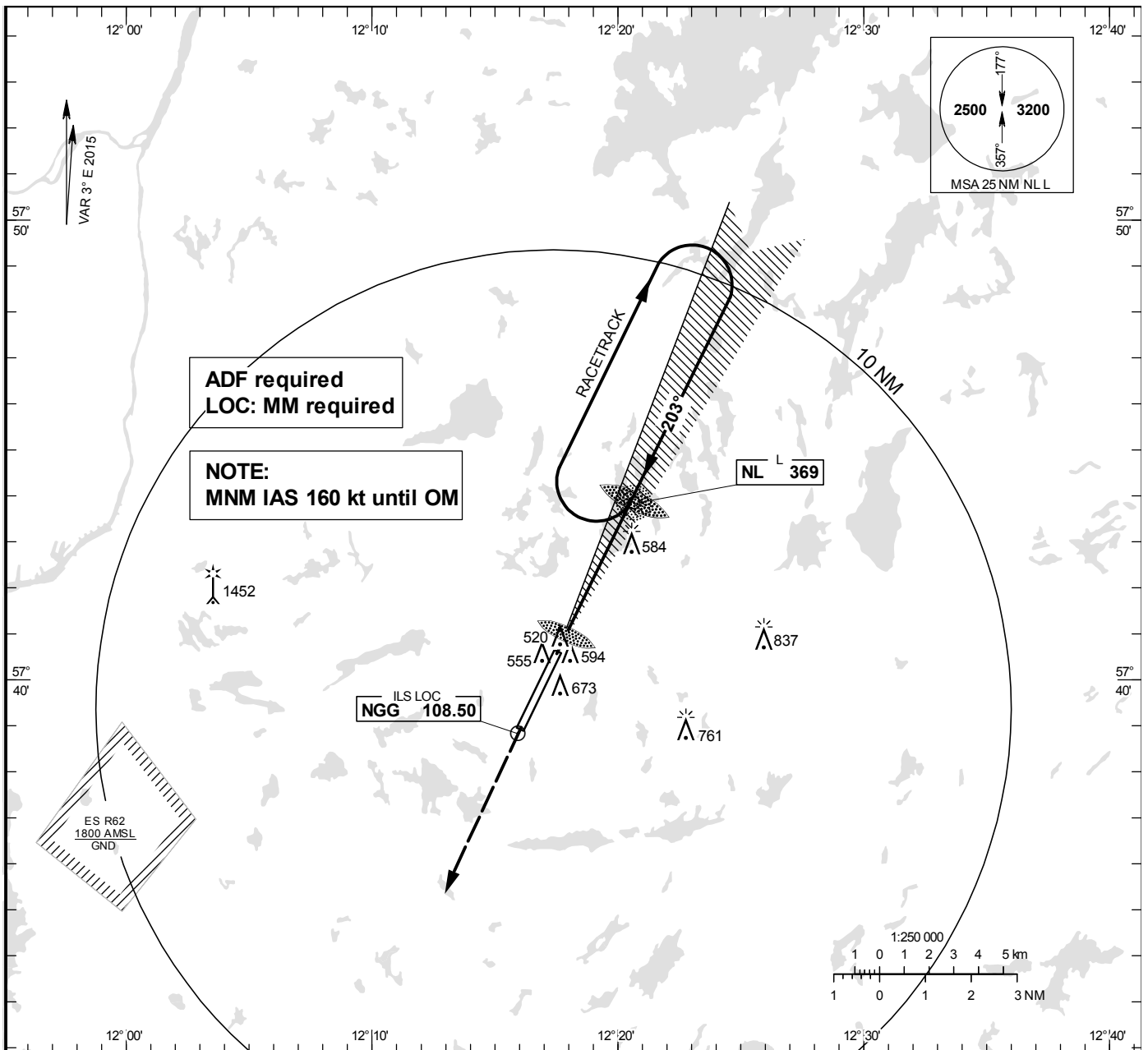


**INSTRUMENT APPROACH CHART – ICAO**

**THR ELEV 506.4 ft, AD ELEV 507 ft**  
 OCH are related to THR.  
 Circling OCH are related to AD ELEV.  
 BRG are MAG  
 ALT, HGT and ELEV in ft.

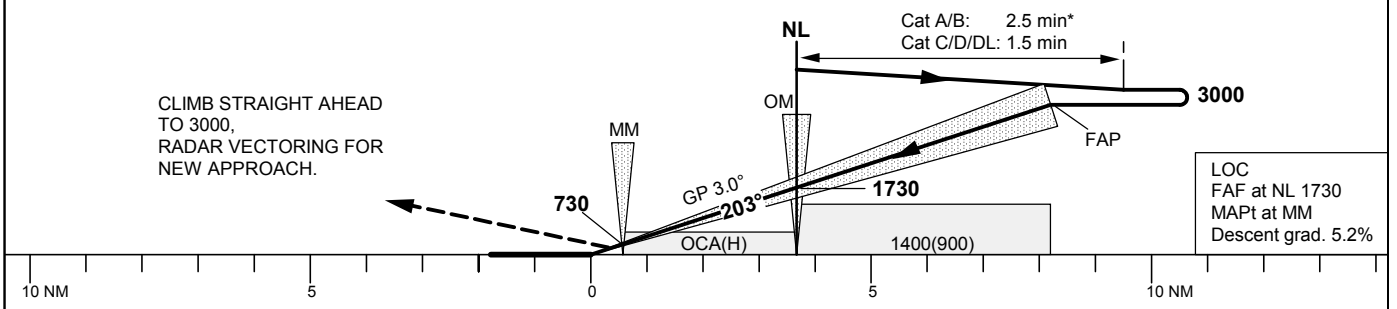
LANDVETTER TOWER	118.605
LANDVETTER ATIS	118.380
GÖTEBORG CONTROL	124.680

**ILS or LOC RWY 21**



**TA 5000 ft AMSL** RDH 49.9 ft **\*\*Timing not authorized for defining the MAPt**

Special COM Failure procedures see ESGG AD 2.22 **\*MNM speed 140 kt IAS**



Cat of ACFT	OCA (H)					Final approach DME LAV NM	LOC Distance FAF-MAPt 3.1**							
	A	B	C	D	D <sub>L</sub>		4	3	2					
Straight-in Approach	CAT I	654(148)	664(158)	675(169)	688(182)	690 (184)	ALT	1480	1160	840				
	CAT II	562 (56)	572 (66)	585 (79)	600(94)	605(99)	GS	kt	80	100	120	140	160	180
	LOC	820 (320)					Time	min:s	2:22	1:53	1:34	1:21	1:11	1:03
Circling	CAT III B Approved	970(470)	1010(500)	1160(660)	1240(740)	1240(740)	Rate of descent	ft/min	425	535	640	745	850	960