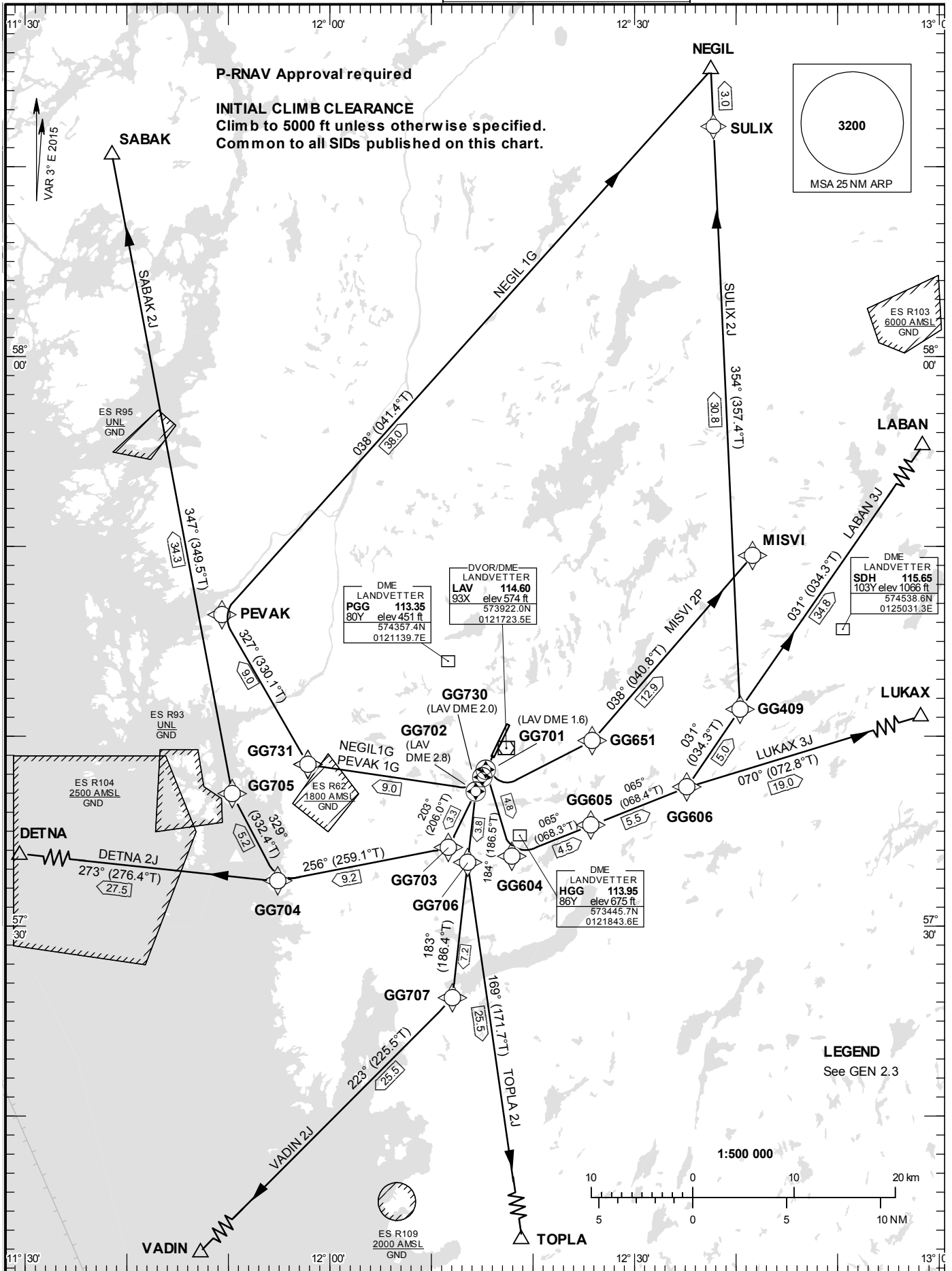


STANDARD INSTRUMENT
DEPARTURE CHART (SID) -
ICAO

HGT and ALT in ft
BRG are MAG (True)
TA 5000 ft AMSL

LANDVETTER TOWER	118.605
LANDVETTER ATIS	118.380
GÖTEBORG CONTROL	124.680

RNAV (DME/DME or GNSS)
SID RWY 21



Prescribed Coding of RNAV SID (DME/DME or GNSS) for RWY 21

REMARK

INITIAL CLIMB CLEARANCE: Climb to 5000 ft unless otherwise specified. Common to all RNAV SIDs.

Approval for P-RNAV (RNAV1) required.

MNM climb gradient due to terrain/obstacles in individual departures below. Where no climb gradient is specified, 3.3% (200 ft/NM) is assumed.

MNM climb gradient required by ATC: Aircraft proceeding on SID shall use 6.6% (400 ft/NM) as a minimum gradient of climb up to 5000 ft AMSL. Aircraft unable to conform with this procedure shall inform ATC accordingly.

Aircraft from GÖTEBORG/Landvetter shall not be operated at an airspeed of more than 250 kt IAS below FL100 unless otherwise instructed.

When instructed by TWR, contact GÖTEBORG CONTROL on frequency indicated adjacent to SID instruction below.

When instructed for line-up, squawk assigned SSR-code.

SID MISVI 2P, NEGIL 1G, PEVAK 1G not for jet traffic.

Notes valid only for NEGIL/PEVAK 1G:

- RNAV SID are based on GNSS only for position update
- PDG 7.0% (425 ft/NM) until GG731 required for obstacle clearance
- Minimum Obstacle Clearance (MOC) 75 m/246 ft is used for obstacle interference checks in Turning Departure

RNAV SID	Path Descriptor	Waypoint Identifier	Fly-over	Course °M(°T)	Turn Direction	Altitude	Speed	VPA/RDH	Rec Navaid	Navigation Specification
DETNA 2J	CF	GG702	Y	203°					LAV	RNAV1
	TF	GG703								RNAV1
	TF	GG704								RNAV1
	TF	DETNA								RNAV1

SID instruction: Climb on track 203° to GG702 – GG703 – GG704 – DETNA

124.205

ACFT unable to follow RNAV SID: Report "unable RNAV SID due RNAV type" to Clearance Delivery and "unable RNAV SID" to Göteborg Control at first contact.
Climb on track 203° to LAV DME 5.2. Turn right to track 256°. Expect radar vectors to DETNA.

RNAV SID	Path Descriptor	Waypoint Identifier	Fly-over	Course °M(°T)	Turn Direction	Altitude	Speed	VPA/RDH	Rec Navaid	Navigation Specification
LABAN 3J	CF	GG701	Y	203°	L	+1000	210		LAV	RNAV1
	DF	GG604				+1000	210			RNAV1
	TF	GG605								RNAV1
	TF	GG606								RNAV1
	TF	LABAN								RNAV1

SID instruction: Climb on track 203° to GG701 – GG604 (max 210 kt IAS until GG604) – GG605 – GG606 – LABAN **124.680**
(MNM climb gradient 3.4% (210 ft/NM) until GG604.)

ACFT unable to follow RNAV SID: Report “unable RNAV SID due RNAV type” to Clearance Delivery and “unable RNAV SID” to Göteborg Control at first contact.
Climb on track 203° to LAV DME 1.6. Turn left to track 154°, (max 210 kt IAS until established on 154°). At LAV DME 3.8 turn left to track 066°. Expect radar vectors to LABAN.
(MNM climb gradient 3.4% (210 ft/NM) until established on 154°.)

RNAV SID	Path Descriptor	Waypoint Identifier	Fly-over	Course °M(°T)	Turn Direction	Altitude	Speed	VPA/RDH	Rec Navaid	Navigation Specification
LUKAX 3J	CF	GG701	Y	203°	L	+1000	210		LAV	RNAV1
	DF	GG604				+1000	210			RNAV1
	TF	GG605								RNAV1
	TF	GG606								RNAV1
	TF	LUKAX								RNAV1

SID instruction: Climb on track 203° to GG701 – GG604 (max 210 kt IAS until GG604) – GG605 – GG606 – LUKAX **124.680**
(MNM climb gradient 3.4% (210 ft/NM) until GG604.)

ACFT unable to follow RNAV SID: Report “unable RNAV SID due RNAV type” to Clearance Delivery and “unable RNAV SID” to Göteborg Control at first contact.
Climb on track 203° to LAV DME 1.6. Turn left to track 154°, (max 210 kt IAS until established on 154°.) At LAV DME 3.8 turn left to track 066°. Expect radar vectors to LUKAX.
(MNM climb gradient 3.4% (210 ft/NM) until established on 154°.)

RNAV SID	Path Descriptor	Waypoint Identifier	Fly-over	Course °M(°T)	Turn Direction	Altitude	Speed	VPA/RDH	Rec Navaid	Navigation Specification
MISVI 2P	CA			203°		+1000	210			RNAV1
	DF	GG651			L	+1000	210			RNAV1
	TF	MISVI								RNAV1

SID instruction: Climb on track 203° to 1000 ft – GG651 (max 210 kt IAS until GG651) – MISVI **124.680**

ACFT unable to follow RNAV SID: Report “unable RNAV SID due RNAV type” to Clearance Delivery and “unable RNAV SID” to Göteborg Control at first contact.
Climb on track 203° to 1000 ft. Turn left to track 066°, (max 210 kt IAS until established on 066°).
Expect radar vectors to MISVI.

RNAV SID	Path Descriptor	Waypoint Identifier	Fly-over	Course °M(°T)	Turn Direction	Altitude	Speed	VPA/RDH	Rec Navaid	Navigation Specification
SABAK 2J	CF	GG702	Y	203°					LAV	RNAV1
	TF	GG703								RNAV1
	TF	GG704								RNAV1
	TF	GG705								RNAV1
	TF	SABAK								RNAV1

SID instruction: Climb on track 203° to GG702 – GG703 – GG704 – GG705 – SABAK

124.205

ACFT unable to follow RNAV SID: Report “unable RNAV SID due RNAV type” to Clearance Delivery and “unable RNAV SID” to Göteborg Control at first contact.

Climb on track 203° to LAV DME 5.2. Turn right to track 257°. Expect radar vectors to SABAK.

RNAV SID	Path Descriptor	Waypoint Identifier	Fly-over	Course °M(°T)	Turn Direction	Altitude	Speed	VPA/RDH	Rec Navaid	Navigation Specification
SULIX 2J	CF	GG701	Y	203°	L	+1000	210		LAV	RNAV1
	DF	GG604				+1000	210			RNAV1
	TF	GG605								RNAV1
	TF	GG606								RNAV1
	TF	GG409								RNAV1
	TF	SULIX								RNAV1
	TF	NEGIL								RNAV1

SID instruction: Climb on track 203° to GG701 – GG604 (max 210 kt IAS until GG604) – GG605 – GG606 – GG409 – SULIX – NEGIL **124.680**
(MNM climb gradient 3.4% (210 ft/NM) until GG604.)

ACFT unable to follow RNAV SID: Report “unable RNAV SID due RNAV type” to Clearance Delivery and “unable RNAV SID” to Göteborg Control at first contact.
Climb on track 203° to LAV DME 1.6. Turn left to track 154°, (max 210 kt IAS until established on 154°.) At LAV DME 3.8 turn left to track 066°. Expect radar vectors to NEGIL.
(MNM climb gradient 3.4% (210 ft/NM) until 154°.)

RNAV SID	Path Descriptor	Waypoint Identifier	Fly-over	Course °M(°T)	Turn Direction	Altitude	Speed	VPA/RDH	Rec Navaid	Navigation Specification
TOPLA 2J	CF	GG702	Y	203°					LAV	RNAV1
	TF	GG706								RNAV1
	TF	TOPLA								RNAV1

SID instruction: Climb on track 203° to GG702 – GG706 – TOPLA

124.205

ACFT unable to follow RNAV SID: Report “unable RNAV SID due RNAV type” to Clearance Delivery and “unable RNAV SID” to Göteborg Control at first contact.

Climb on track 203° to LAV DME 2.8. Turn left to track 184°. Expect radar vectors to TOPLA.

RNAV SID	Path Descriptor	Waypoint Identifier	Fly-over	Course °M(°T)	Turn Direction	Altitude	Speed	VPA/RDH	Rec Navaid	Navigation Specification
VADIN 2J	CF	GG702	Y	203°					LAV	RNAV1
	TF	GG706								RNAV1
	TF	GG707								RNAV1
	TF	VADIN								RNAV1

SID instruction: Climb on track 203° to GG702 – GG706 – GG707 – VADIN

124.205

ACFT unable to follow RNAV SID: Report "unable RNAV SID due RNAV type" to Clearance Delivery and "unable RNAV SID" to Göteborg Control at first contact.
Climb on track 203° to LAV DME 2.8. Turn left to track 184°. Expect radar vectors to VADIN.

RNAV SID	Path Descriptor	Waypoint Identifier	Fly-over	Course °M(°T)	Turn Direction	Altitude	Speed	VPA/RDH	Rec Navaid	Navigation Specification
NEGIL 1G	CF	GG730	Y	203° (206.0°)	R				LAV	RNAV1
	DF	GG731								RNAV1
	TF	PEVAK		327° (330.1°)						RNAV1
	TF	NEGIL		038° (041.4°)						RNAV1

SID instruction: GG730 (PDG MNM 7.0% (425 ft/NM) until GG731) – GG731 – PEVAK – NEGIL

124.205

ACFT unable to follow RNAV SID: Report "unable RNAV SID due RNAV type" to Clearance Delivery and "unable RNAV SID" to Göteborg Control at first contact.
Climb on track 203° to LAV DME 2.0. Turn right to track 277°. (PDG MNM 7.0% (425 ft/NM) until established on track 277°)
Expect radar vectors to NEGIL.

RNAV SID	Path Descriptor	Waypoint Identifier	Fly-over	Course °M(°T)	Turn Direction	Altitude	Speed	VPA/RDH	Rec Navaid	Navigation Specification
PEVAK 1G	CF	GG730	Y	203° (206.0°)	R				LAV	RNAV1
	DF	GG731								RNAV1
	TF	PEVAK		327° (330.1°)						RNAV1

SID instruction: GG730 (PDG MNM 7.0% (425 ft/NM) until GG731) – GG731 – PEVAK

124.205

ACFT unable to follow RNAV SID: Report "unable RNAV SID due RNAV type" to Clearance Delivery and "unable RNAV SID" to Göteborg Control at first contact.
Climb on track 203° to LAV DME 2.0. Turn right to track 277°. (PDG MNM 7.0% (425 ft/NM) until established on track 277°)
Expect radar vectors to PEVAK.