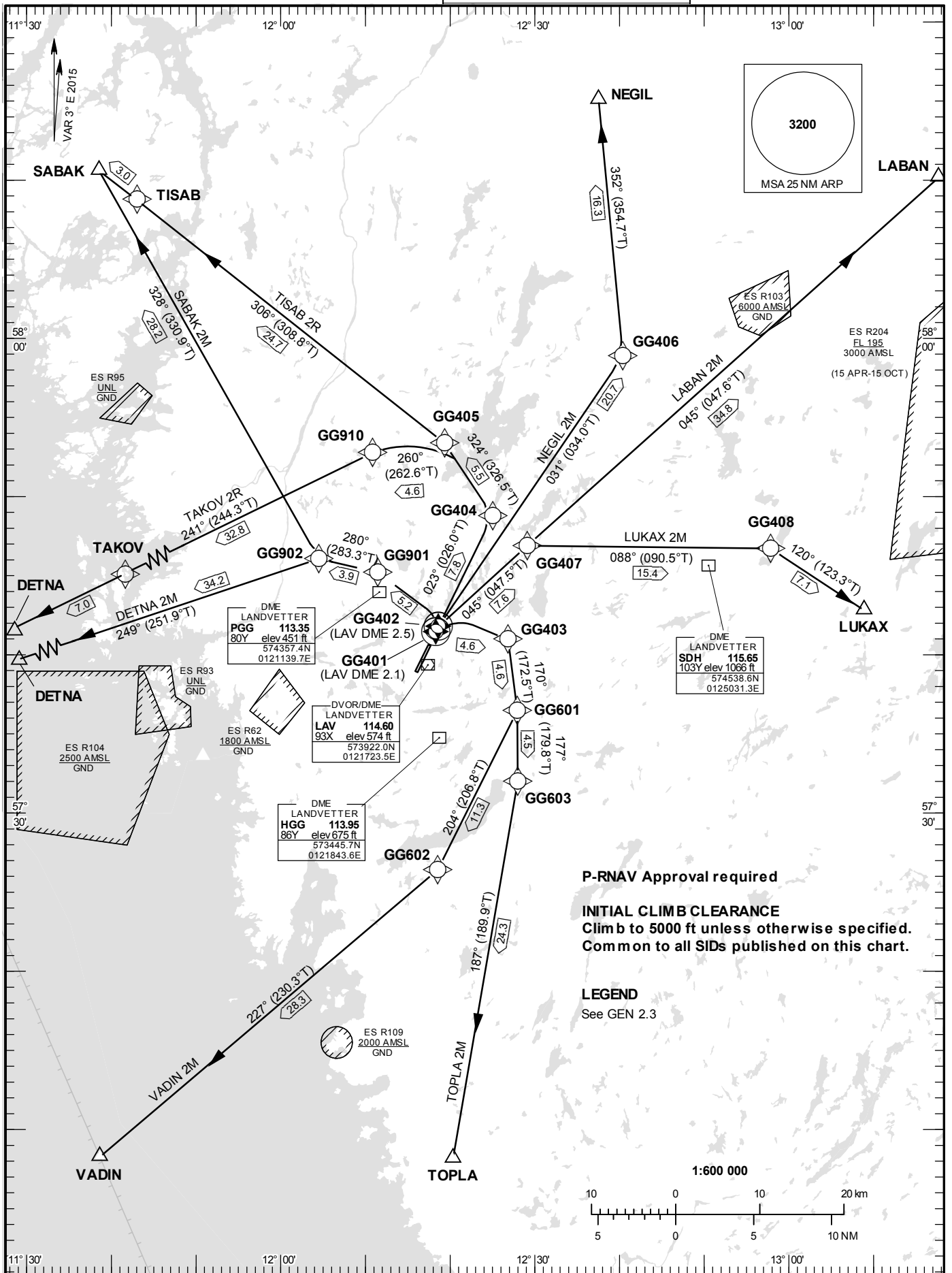


STANDARD INSTRUMENT
DEPARTURE CHART (SID) -
ICAO

HGT and ALT in ft
BRG are MAG (True)
TA 5000 ft AMSL

LANDVETTER TOWER	118.605
LANDVETTER ATIS	118.380
GÖTEBORG CONTROL	124.680

RNAV (DME/DME or GNSS)
SID RWY 03



Prescribed Coding of RNAV SID (DME/DME or GNSS) for RWY 03

REMARK

INITIAL CLIMB CLEARANCE: Climb to 5000 ft unless otherwise specified. Common to all RNAV SIDs.

Approval for P-RNAV (RNAV1) required.

MNM climb gradient due to terrain/obstacles in individual departures below. Where no climb gradient is specified, 3.3% (200 ft/NM) is assumed.

MNM climb gradient required by ATC: Aircraft proceeding on SID shall use 6.6% (400 ft/NM) as a minimum gradient of climb up to 5000 ft AMSL. Aircraft unable to conform with this procedure shall inform ATC accordingly.

Aircraft from GÖTEBORG/Landvetter shall not be operated at an airspeed of more than 250 kt IAS below FL100 unless otherwise instructed.

When instructed by TWR, contact GÖTEBORG CONTROL on frequency indicated adjacent to SID instruction below.

When instructed for line-up, squawk assigned SSR-code.

See AD 2.21 para 1.6 for availability.

RNAV SID	Path Descriptor	Waypoint Identifier	Fly-over	Course °M(°T)	Turn Direction	Altitude	Speed	VPA/RDH	Rec Navaid	Navigation Specification
DETNA 2M	CF	GG401	Y	023°	L	+1000	210		LAV	RNAV1
	DF	GG901				+1000	210			RNAV1
	TF	GG902								RNAV1
	TF	DETNA								RNAV1

SID instruction: Climb on track 023° to GG401 – GG901 (max 210 kt IAS until GG901) – GG902 – DETNA **124.680**
(MNM climb gradient 5.4% (330 ft/NM until GG901.)

ACFT unable to follow RNAV SID: Report “unable RNAV SID due RNAV type” to Clearance Delivery and “unable RNAV SID” to Göteborg Control at first contact.
Climb on track 023° to LAV DME 2.1. Turn left to track 297°, (max 210 kt IAS until established on 297°). Expect radar vectors to DETNA.
(MNM climb gradient 5.4% (330 ft/NM) until established 297°)

RNAV SID	Path Descriptor	Waypoint Identifier	Fly-over	Course °M(°T)	Turn Direction	Altitude	Speed	VPA/RDH	Rec Navaid	Navigation Specification
LABAN 2M	CF	GG402	Y	023°					LAV	RNAV1
	TF	GG407								RNAV1
	TF	LABAN								RNAV1

SID instruction: Climb on track 023° to GG402 – GG407 – LABAN **124.680**

ACFT unable to follow RNAV SID: Report “unable RNAV SID due RNAV type” to Clearance Delivery and “unable RNAV SID” to Göteborg Control at first contact.
Climb on track 023° to LAV DME 2.5. Turn right to track 045°. Expect radar vectors to LABAN.

RNAV SID	Path Descriptor	Waypoint Identifier	Fly-over	Course °M(°T)	Turn Direction	Altitude	Speed	VPA/RDH	Rec Navaid	Navigation Specification
LUKAX 2M	CF	GG402	Y	023°					LAV	RNAV1
	TF	GG407								RNAV1
	TF	GG408								RNAV1
	TF	LUKAX								RNAV1

SID instruction: Climb on track 023° to GG402 – GG407 – GG408 – LUKAX

124.680

ACFT unable to follow RNAV SID: Report “unable RNAV SID due RNAV type” to Clearance Delivery and “unable RNAV SID” to Göteborg Control at first contact.
Climb on track 023° to LAV DME 2.5. Turn right to track 045°. Expect radar vectors to LUKAX.

RNAV SID	Path Descriptor	Waypoint Identifier	Fly-over	Course °M(°T)	Turn Direction	Altitude	Speed	VPA/RDH	Rec Navaid	Navigation Specification
NEGIL 2M	CF	GG402	Y	023°					LAV	RNAV1
	TF	GG406								RNAV1
	TF	NEGIL								RNAV1

SID instruction: Climb on track 023° to GG402 – GG406 – NEGIL

124.680

ACFT unable to follow RNAV SID: Report “unable RNAV SID due RNAV type” to Clearance Delivery and “unable RNAV SID” to Göteborg Control at first contact.
Climb on track 023° to LAV DME 2.5. Turn right to track 031°. Expect radar vectors to NEGIL.

RNAV SID	Path Descriptor	Waypoint Identifier	Fly-over	Course °M(°T)	Turn Direction	Altitude	Speed	VPA/RDH	Rec Navaid	Navigation Specification
SABAK 2M	CF	GG401	Y	023°	L	+1000	210		LAV	RNAV1
	DF	GG901				+1000	210			RNAV1
	TF	GG902								RNAV1
	TF	SABAK								RNAV1

SID instruction: Climb on track 023° to GG401 – GG901 (max 210 kt IAS until GG901) – GG902 – SABAK (MNM climb gradient 5.4% (330 ft/NM) until GG901.)

124.680

ACFT unable to follow RNAV SID: Report “unable RNAV SID due RNAV type” to Clearance Delivery and “unable RNAV SID” to Göteborg Control at first contact.
Climb on track 023° to LAV DME 2.1. Turn left to track 297°, (max 210 kt IAS until established on 297°). Expect radar vectors to SABAK.
(MNM climb gradient 5.4% (330 ft/NM) until established on 297°.)

RNAV SID	Path Descriptor	Waypoint Identifier	Fly-over	Course °M(°T)	Turn Direction	Altitude	Speed	VPA/RDH	Rec Navaid	Navigation Specification
TAKOV 2R	CF	GG402	Y	023°					LAV	RNAV1
	TF	GG404								RNAV1
	TF	GG405								RNAV1
	TF	GG910								RNAV1
	TF	TAKOV								RNAV1
	TF	DETNA								RNAV1

SID instruction: Climb on track 023° to GG402 – GG404 – GG405 – GG910 – TAKOV – DETNA

124.680

ACFT unable to follow RNAV SID: Report "unable RNAV SID due RNAV type" to Clearance Delivery and "unable RNAV SID" to Göteborg Control at first contact.

SID: Climb on track 023°. Expect radar vectors to DETNA.

RNAV SID	Path Descriptor	Waypoint Identifier	Fly-over	Course °M(°T)	Turn Direction	Altitude	Speed	VPA/RDH	Rec Navaid	Navigation Specification
TISAB 2R	CF	GG402	Y	023°					LAV	RNAV1
	TF	GG404								RNAV1
	TF	GG405								RNAV1
	TF	TISAB								RNAV1
	TF	SABAK								RNAV1

SID instruction: Climb on track 023° to GG402 – GG404 – GG405 – TISAB – SABAK

124.680

ACFT unable to follow RNAV SID: Report "unable RNAV SID due RNAV type" to Clearance Delivery and "unable RNAV SID" to Göteborg Control at first contact.

SID: Climb on track 023°. Expect radar vectors to SABAK.

RNAV SID	Path Descriptor	Waypoint Identifier	Fly-over	Course °M(°T)	Turn Direction	Altitude	Speed	VPA/RDH	Rec Navaid	Navigation Specification
TOPLA 2M	CF	GG401	Y	023°	R	+1000	210		LAV	RNAV1
	DF	GG403				+1000	210			RNAV1
	TF	GG601								RNAV1
	TF	GG603								RNAV1
	TF	TOPLA								RNAV1

SID instruction: Climb on track 023° to GG401 – GG403 (max 210 kt IAS until GG403) – GG601 – GG603 – TOPLA (MNM climb gradient 6.3% (385 ft/NM) until GG403.)

124.205

ACFT unable to follow RNAV SID: Report "unable RNAV SID due RNAV type" to Clearance Delivery and "unable RNAV SID" to Göteborg Control at first contact.

SID: Climb on track 023° to LAV DME 2.1. Turn right to track 111°, (max 210 kt IAS until established on 111°). Expect radar vectors to TOPLA. (MNM climb gradient 6.3% (385 ft/NM) until established on 111°.)

RNAV SID	Path Descriptor	Waypoint Identifier	Fly-over	Course °M(°T)	Turn Direction	Altitude	Speed	VPA/RDH	Rec Navaid	Navigation Specification
VADIN 2M	CF	GG401	Y	023°	R	+1000	210		LAV	RNAV1
	DF	GG403				+1000	210			RNAV1
	TF	GG601								RNAV1
	TF	GG602								RNAV1
	TF	VADIN								RNAV1

SID instruction: Climb on track 023° to GG401 – GG403 (max 210 kt IAS until GG403) – GG601 – GG602 – VADIN **124.205**
(MNM climb gradient 6.3% (385 ft/NM) until GG403.)

ACFT unable to follow RNAV SID: Report “unable RNAV SID due RNAV type” to Clearance Delivery and “unable RNAV SID” to Göteborg Control at first contact.
Climb on track 023° to LAV DME 2.1. Turn right to track 111°, (max 210 kt IAS until established on 111°). Expect radar vectors to VADIN.
(MNM climb gradient 6.3% (385 ft/NM) until established on 111°.)