

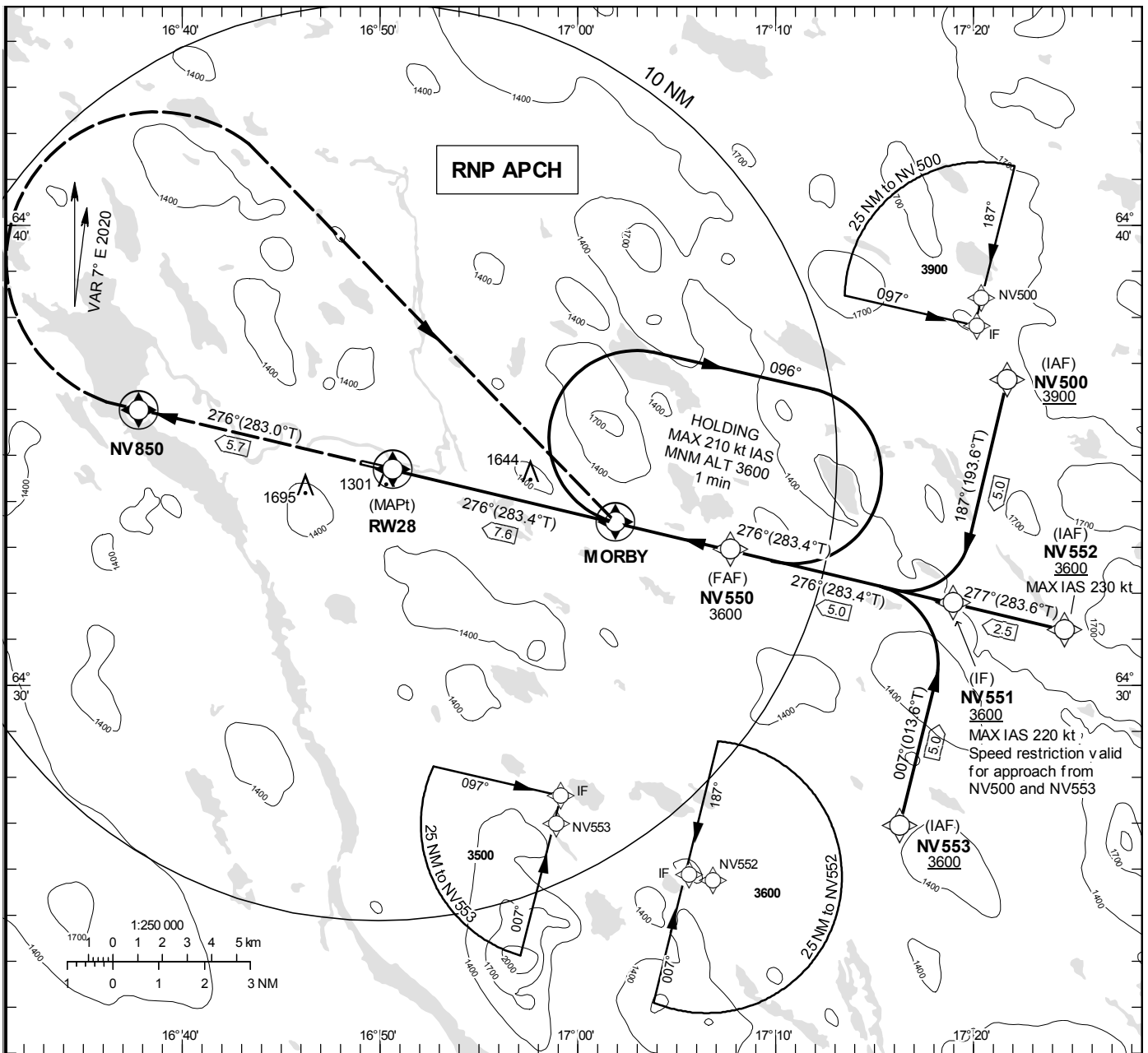
**INSTRUMENT
APPROACH
CHART – ICAO**

THR ELEV 1139.3 ft, AD ELEV 1141 ft
OCH are related to THR.
BRG are MAG (True).
ALT, HGT and ELEV in ft.

VILHELMINA
INFORMATION 122.555

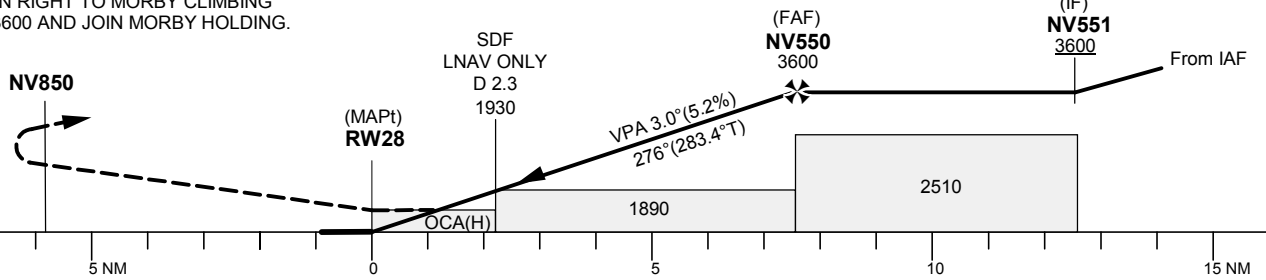
RNP RWY 28

EGNOS Ch 42200 E 28A



TA 5000 ft AMSL RDH 50.0 ft

CLIMB STRAIGHT AHEAD TO NV850.
TURN RIGHT TO MORBY CLIMBING
TO 3600 AND JOIN MORBY HOLDING.



Cat of ACFT	OCA (H)			Final approach Dist to RW28	Distance FAF-MAPt 7.6 NM					
	A	B	C		7	6	5	4	3	2
LPV	1432(293)	1444(305)	1452(313)	ALT	3420	3100	2780	2460	2140	1820
LNAV	1700(570)			GS	Kt	80	100	120	140	160
				Rate of descent	ft/min	425	530	635	745	850

RNP RWY 28 via NV500

Path Desc	Waypoint Identifier	Fly-over	Course °M(°T)	Dist (NM)	Turn Dir	Altitude	Speed	VPA/RDH	Rec Navaid	Navigation Specification
IF	NV500	-	-	-	-	+3900	-	-	-	RNP APCH
TF	NV551	-	187°(193.6°)	5.0	-	+3600	-220	-	-	RNP APCH

RNP RWY 28 via NV552

Path Desc	Waypoint Identifier	Fly-over	Course °M(°T)	Dist (NM)	Turn Dir	Altitude	Speed	VPA/RDH	Rec Navaid	Navigation Specification
IF	NV552	-	-	-	-	+3600	-230	-	-	RNP APCH
TF	NV551	-	277°(283.6°)	2.5	-	+3600	-	-	-	RNP APCH

RNP RWY 28 via NV553

Path Desc	Waypoint Identifier	Fly-over	Course °M(°T)	Dist (NM)	Turn Dir	Altitude	Speed	VPA/RDH	Rec Navaid	Navigation Specification
IF	NV553	-	-	-	-	+3600	-	-	-	RNP APCH
TF	NV551	-	007°(013.6°)	5.0	-	+3600	-220	-	-	RNP APCH

Path Desc	Waypoint Identifier	Fly-over	Course °M(°T)	Dist (NM)	Turn Dir	Altitude	Speed	VPA/RDH	Rec Navaid	Navigation Specification
IF	NV551	-	-	-	-	+3600	-	-	-	RNP APCH
TF	NV550	-	276°(283.4°)	5.0	-	@3600	-	-	-	RNP APCH
TF	RW28	Y	276°(283.4°)	7.6	-	@1189	-	-3.00/50	-	RNP APCH
TF	NV850	Y	276°(283.0°)	5.7	R	-	-	-	-	RNP APCH
DF	MORBY	Y	-	-	-	-	-	-	-	RNP APCH
HM	MORBY	Y	276°(283.4°)	-	R	+3600	-210	-	-	RNAV 1

FAS Data Block

RNP RWY 28

Input data

Operation Type	0
SBAS Provider	1 (EGNOS)
Airport Identifier	ESNV
Runway	28
Runway Letter	0 (None)
Approach Performance Designator	0
Route Indicator	
Reference Path Data Selector	0
Reference Path Identifier	E28A
LTP/FTP Latitude	643440.9600N
LTP/FTP Longitude	0165038.1300E
LTP/FTP Ellipsoidal Height (metres)	376.6
FPAP Latitude	643450.2000N
Delta FPAP Latitude (seconds)	9.2400
FPAP Longitude	0164905.9700E
Delta FPAP Longitude (seconds)	-92.1600
Threshold Crossing Height	50.0
TCH Units Selector	0 (feet)
Glidepath Angle (degrees)	3.00
Course Width (metres)	105.00
Length Offset (metres)	0
HAL (metres)	40.0
VAL (metres)	50.0

Output data

Data Block	10 16 0E 13 05 1C 00 00 01 38 32 05 80 C1 B6 1B 64 87 3A 07 B6 22 30 48 00 00 30 FD F4 01 2C 01 64 00 C8 FA 20 77 F8 B0
Calculated CRC Value	2077F8B0

Required Additional Data

ICAO Code	ES
LTP/FTP Orthometric Height (metres)	347.2