

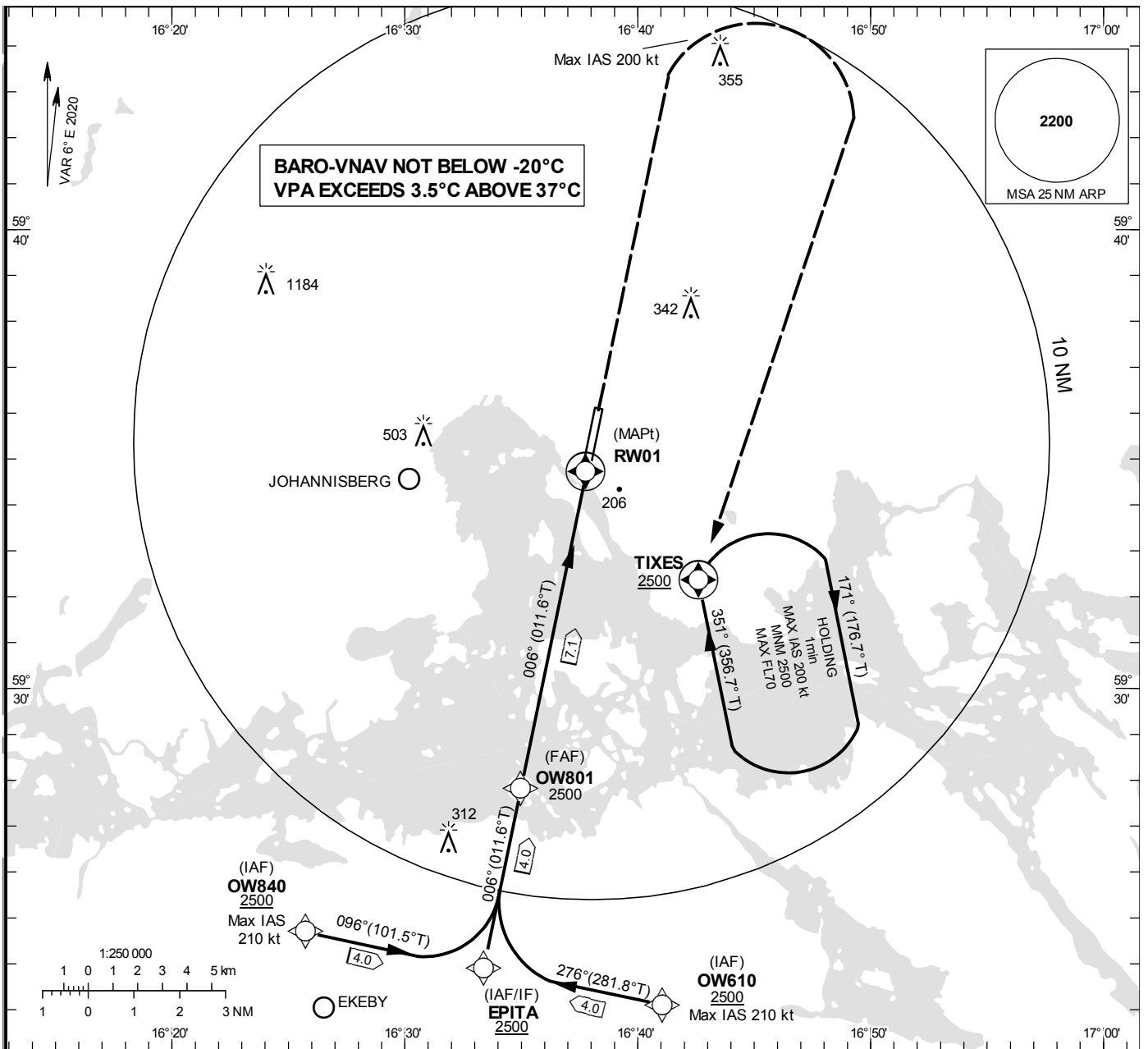
**INSTRUMENT
APPROACH
CHART – ICAO**

THR ELEV 6 ft, AD ELEV 21 ft
OCH are related to THR.
Circling OCH are related to AD ELEV
BRG are MAG (True).
ALT. HGT and ELEV in ft.

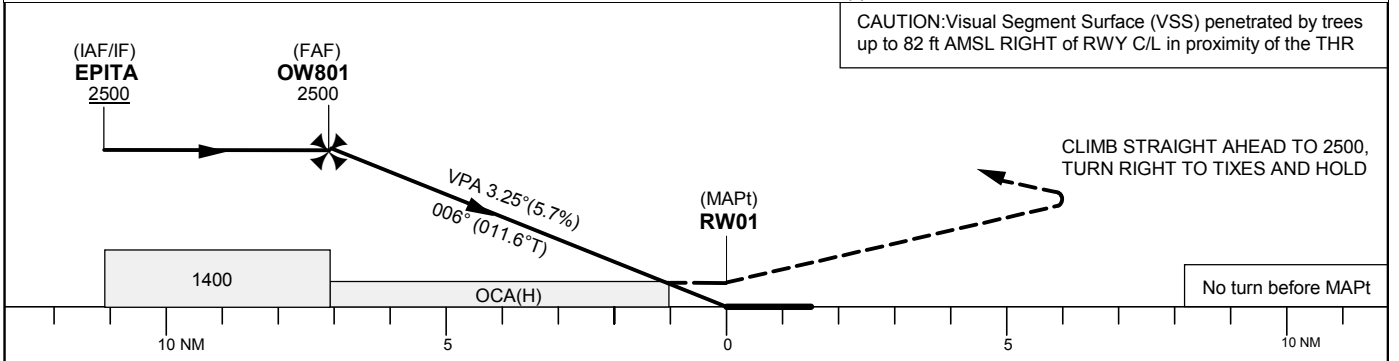
VÄSTERÅS TOWER 130.605

RNP RWY 01

EGNOS CH 55001 E 01A



TA 5000 ft AMSL RDH 59.0 ft MAX SPEED within missed approach turn 200 kt IAS



Cat of ACFT	OCA (H)				Final approach Dist to RW 01	Distance FAF-MAPt 7.1 NM						
	A	B	C	D		7	6	5	4	3	2	1
LPV	339(333)	349(343)	358(352)	368(362)	ALT	2480	2140	1790	1450	1100	760	410
LNAV/VNAV	341(335)	351(345)	361(355)	371(365)								
LNAV	460 (454)											
Circling	530(510)	550(530)	900(880)	900(880)								

RNP RWY 01 via EPITA

Path Desc	Waypoint Identifier	Fly-over	Course °M(°T)	Dist /Time	Turn Dir	Altitude	Speed	VPA/RDH	Rec Navaid	Navigation Specification
IF	EPITA	N	-	-	-	+2500	-	-	-	RNP APCH
TF	OW801	N	006°(011.6°)	4.0 NM	-	@2500	-	-	-	RNP APCH
TF	RW01	Y	006°(011.6°)	7.1 NM	-	@65	-	-	-	RNP APCH
FA	-	-	006°(011.6°)	-	-	@2500	-200	-	-	RNP APCH
DF	TIXES	Y	-	-	R	+2500	-200	-	-	RNP APCH
HM	TIXES	Y	351°(356.7°)	1 min	R	+2500	-200	-	-	RNAV 1

RNP RWY 01 via OW610

Path Desc	Waypoint Identifier	Fly-over	Course °M(°T)	Dist /Time	Turn Dir	Altitude	Speed	VPA/RDH	Rec Navaid	Navigation Specification
IF	OW610	N	-	-	-	+2500	-210	-	-	RNP APCH
TF	EPITA	N	276° (281.8°)	4.0 NM	R	+2500	-210	-	-	RNP APCH
TF	OW801	N	006°(011.6°)	4.0 NM	-	@2500	-	-	-	RNP APCH
TF	RW01	Y	006°(011.6°)	7.1 NM	-	@65	-	-	-	RNP APCH
FA	-	-	006°(011.6°)	-	-	@2500	-200	-	-	RNP APCH
DF	TIXES	Y	-	-	R	+2500	-200	-	-	RNP APCH
HM	TIXES	Y	351°(356.7°)	1 min	R	+2500	-200	-	-	RNAV 1

RNP RWY 01 via OW840

Path Desc	Waypoint Identifier	Fly-over	Course °M(°T)	Dist /Time	Turn Dir	Altitude	Speed	VPA/RDH	Rec Navaid	Navigation Specification
IF	OW840	N	-	-	-	+2500	-210	-	-	RNP APCH
TF	EPITA	N	096° (101.5°)	4.0 NM	L	+2500	-210	-	-	RNP APCH
TF	OW801	N	006°(011.6°)	4.0 NM	-	@2500	-	-	-	RNP APCH
TF	RW01	Y	006°(011.6°)	7.1 NM	-	@65	-	-	-	RNP APCH
FA	-	-	006°(011.6°)	-	-	@2500	-200	-	-	RNP APCH
DF	TIXES	Y	-	-	R	+2500	-200	-	-	RNP APCH
HM	TIXES	Y	351°(356.7°)	1 min	R	+2500	-200	-	-	RNAV 1

FAS Data Block

RNP RWY 01

Input data

Operation Type	0
SBAS Provider	1 (EGNOS)
Airport Identifier	ESOW
Runway	01
Runway Letter	0 (None)
Approach Performance Designator	0
Route Indicator	
Reference Path Data Selector	0
Reference Path Identifier	E01A
LTP/FTP Latitude	593442.5430N
LTP/FTP Longitude	0163745.3020E
LTP/FTP Ellipsoidal Height (metres)	27.3
FPAP Latitude	593604.2305N
Delta FPAP Latitude (seconds)	81.6875
FPAP Longitude	0163818.5090E
Delta FPAP Longitude (seconds)	33.2070
Threshold Crossing Height	59.0
TCH Units Selector	0 (feet)
Glidepath Angle (degrees)	3.25
Course Width (metres)	105.00
Length Offset (metres)	0
HAL (metres)	40.0
VAL (metres)	50.0

Output data

Data Block	10 17 0F 13 05 01 00 00 01 31 30 05 DE 7C 91 19 AC F1 22 07 11 15 2F 7E 02 6E 03 01 4E 02 45 01 64 00 C8 FA E2 B0 1B DC
Calculated CRC Value	E2B01BDC

Required Additional Data

ICAO Code	ES
LTP/FTP Orthometric Height (metres)	1.7