

**VISUAL APPROACH CHART - ICAO**

1:250000



**AD ELEV 1141 FEET**

ELEV and ALT in ft  
HGT in ft above AD ELEV

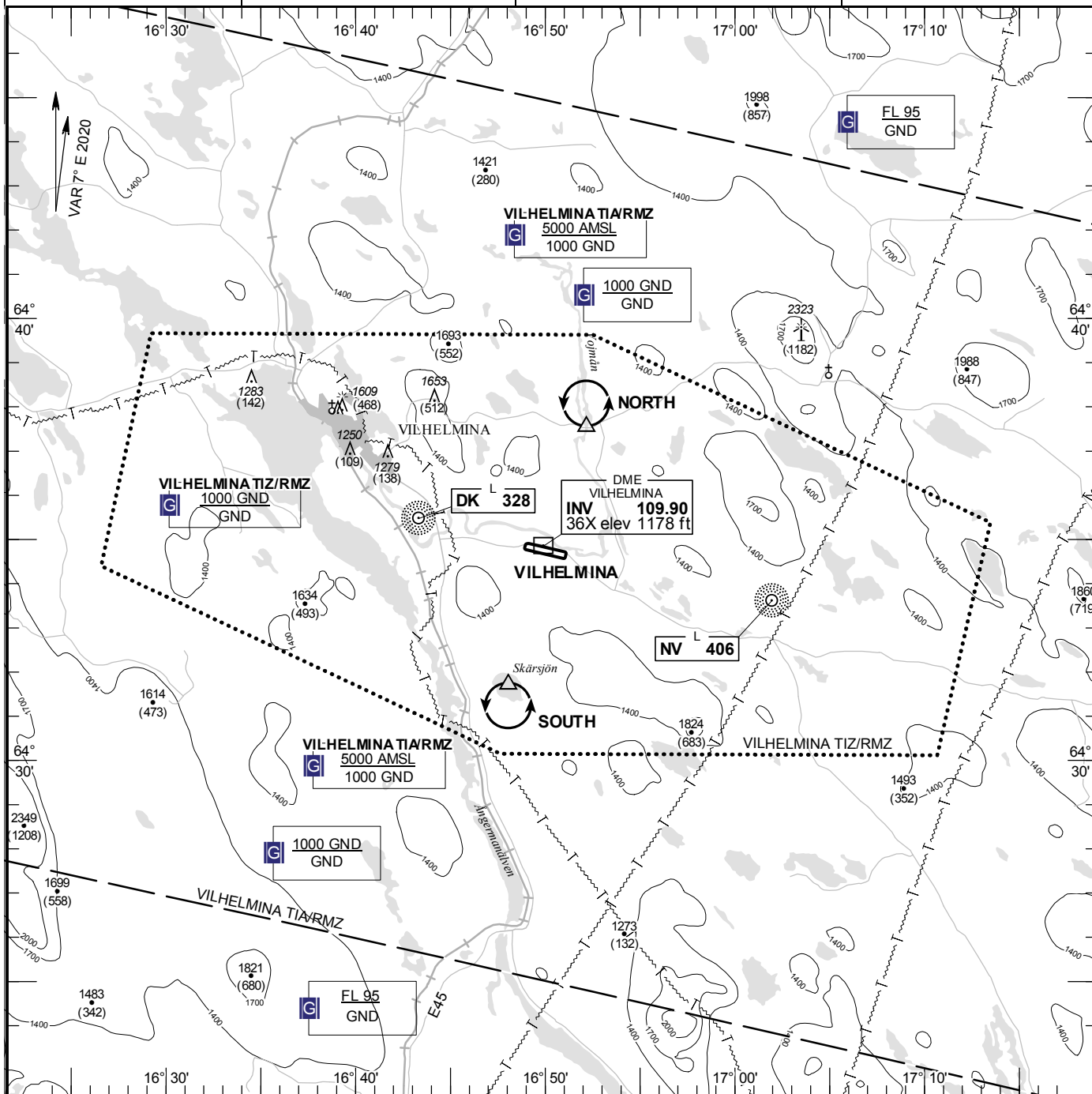
**TA 5000 AMSL**

**VILHELMINA INFORMATION**

**122.555**

**AD 2 ESNV 6-1**

**VILHELMINA SWEDEN**



**Communication failure**

NIL

**Remark**

NIL

RWY NR	THR ELEV	PAPI (MEHT)
10	1139 ft	Left/3.00° (22 ft)
28	1139.2 ft	Left/3.00° (49 ft)

**Legend**  
See GEN 2.3

**Entry / exit point**

NIL

**Holding**

**NORTH:** Hold north of bridge over Vojmán, north of point 643732N 0165209E  
**SOUTH:** Hold at lake Skårsjön, south of point 643142N 0164802E