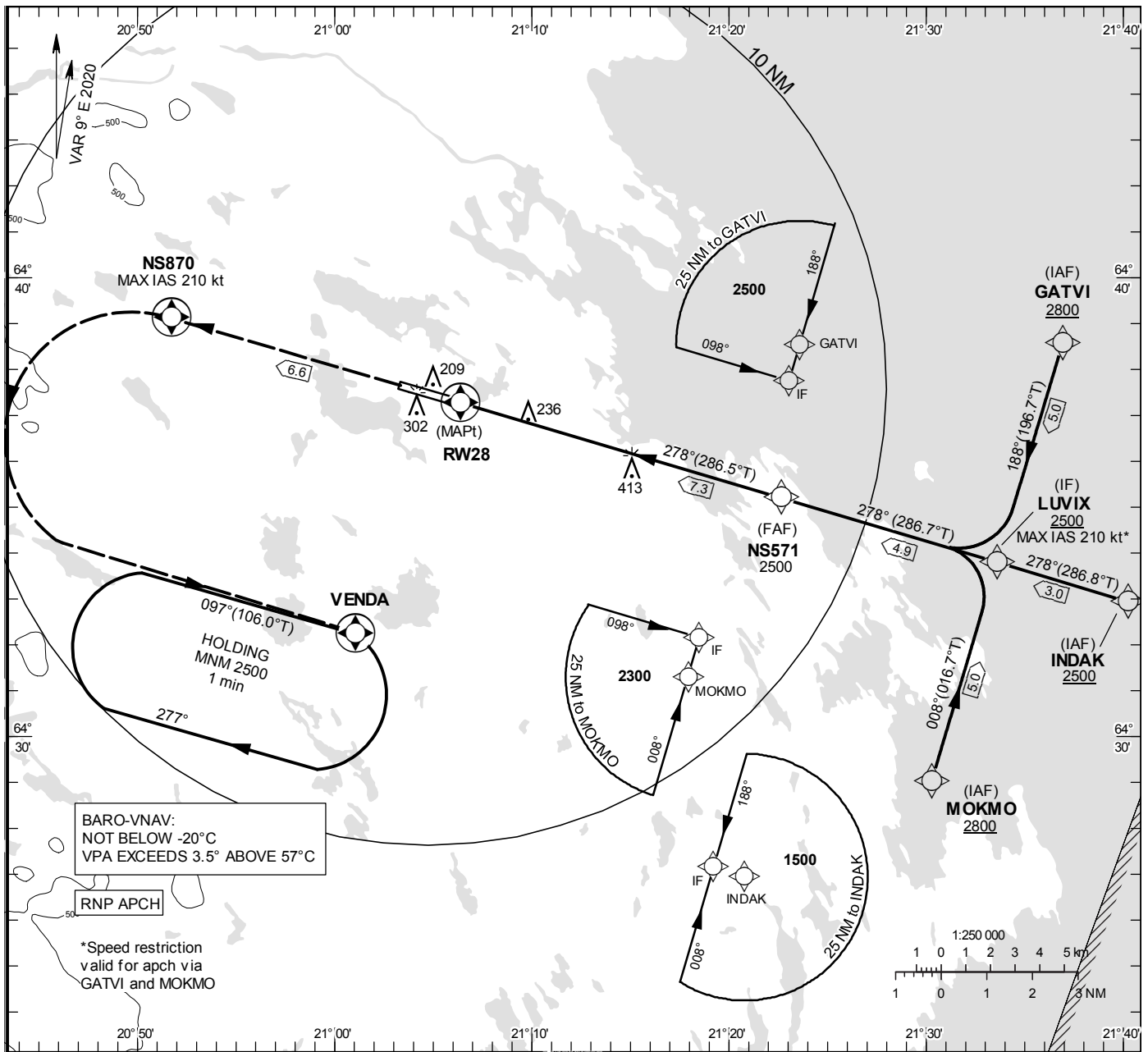


**INSTRUMENT
APPROACH
CHART – ICAO**

THR ELEV 122.3 ft, AD ELEV 158 ft
 OCH are related to THR.
 BRG are MAG (True).
 ALT, HGT and ELEV in ft.

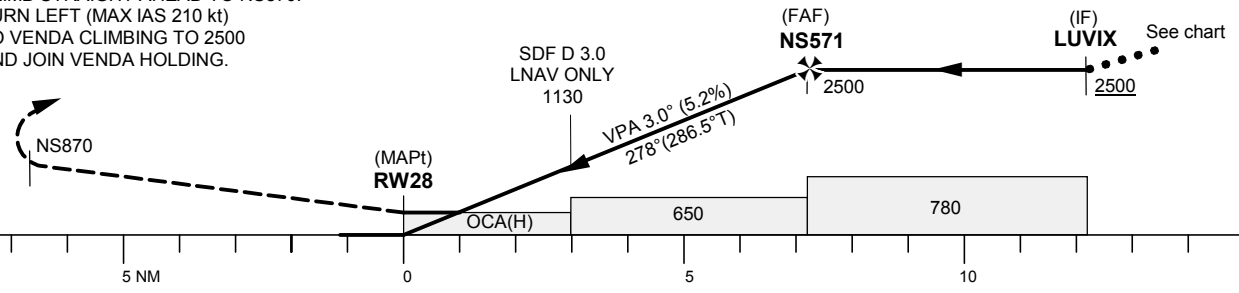
SKELLEFTEÅ TOWER 122.055

RNP RWY 28



TA 5000 ft AMSL RDH 50 ft

CLIMB STRAIGHT AHEAD TO NS870.
 TURN LEFT (MAX IAS 210 kt)
 TO VENDA CLIMBING TO 2500
 AND JOIN VENDA HOLDING.



Cat of ACFT	OCA (H)				Final approach Dist to RW28 (NM)	Distance FAF-MAPt 7.3 NM						
	A	B	C	D		7	6	5	4	3	2	1
LNAV/VNAV	340(220)	360(240)	370(250)	400(280)	ALT	2400	2080	1760	1450	1130	810	490
LNAV	490(370)				GS	kt	80	100	120	140	160	180
					Rate of descent	ft/min	425	530	635	745	850	955

RNP RWY 28 via GATVI

Path Desc	Waypoint Identifier	Fly-over	Course °M(°T)	Dist (NM)	Turn Dir	Altitude	Speed	VPA/RDH	Rec Navaid	Navigation Specification
IF	GATVI	-	-	-	-	+2800	-	-	-	RNP APCH
TF	LUVIX	-	188°(196.7°)	5.0	-	+2500	-210	-	-	RNP APCH

RNP RWY 28 via INDAK

Path Desc	Waypoint Identifier	Fly-over	Course °M(°T)	Dist (NM)	Turn Dir	Altitude	Speed	VPA/RDH	Rec Navaid	Navigation Specification
IF	INDAK	-	-	-	-	+2500	-	-	-	RNP APCH
TF	LUVIX	-	278°(286.8°)	3.0	-	+2500	-	-	-	RNP APCH

RNP RWY 28 via MOKMO

Path Desc	Waypoint Identifier	Fly-over	Course °M(°T)	Dist (NM)	Turn Dir	Altitude	Speed	VPA/RDH	Rec Navaid	Navigation Specification
IF	MOKMO	-	-	-	-	+2800	-	-	-	RNP APCH
TF	LUVIX	-	008°(016.7°)	5.0	-	+2500	-210	-	-	RNP APCH

Path Desc	Waypoint Identifier	Fly-over	Course °M(°T)	Dist (NM)	Turn Dir	Altitude	Speed	VPA/RDH	Rec Navaid	Navigation Specification
IF	LUVIX	-	-	-	-	+2500	-	-	-	RNP APCH
TF	NS571	-	278°(286.7°)	4.9	-	@2500	-	-	-	RNP APCH
TF	RW28	Y	278°(286.5°)	7.3	-	@173	-	-3.0/50	-	RNP APCH
DF	NS870	Y	-	6.6	-	-	-210	-	-	RNP APCH
DF	VENDA	Y	-	-	L	+2500	-	-	-	RNP APCH
HM	VENDA	Y	097°(106.0°)	-	R	+2500	-	-	-	RNAV 1