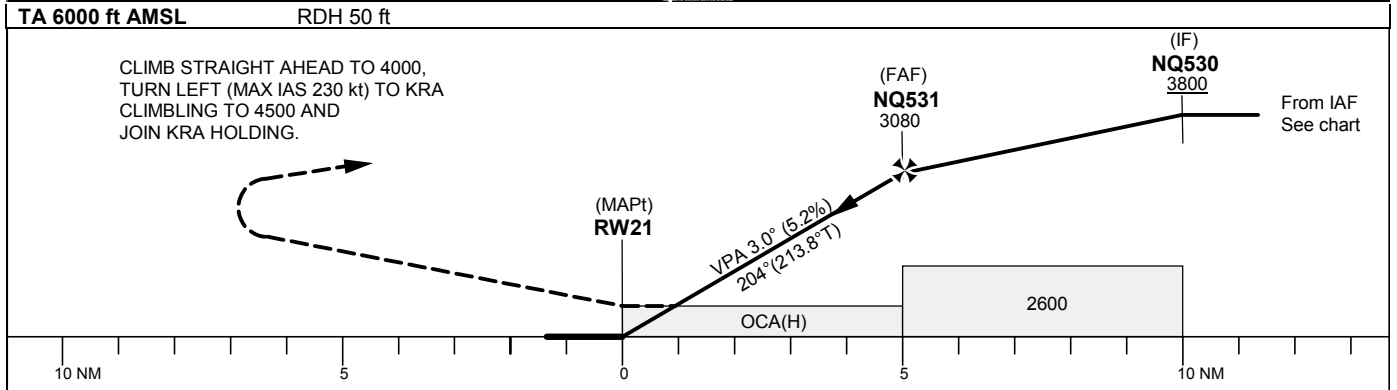
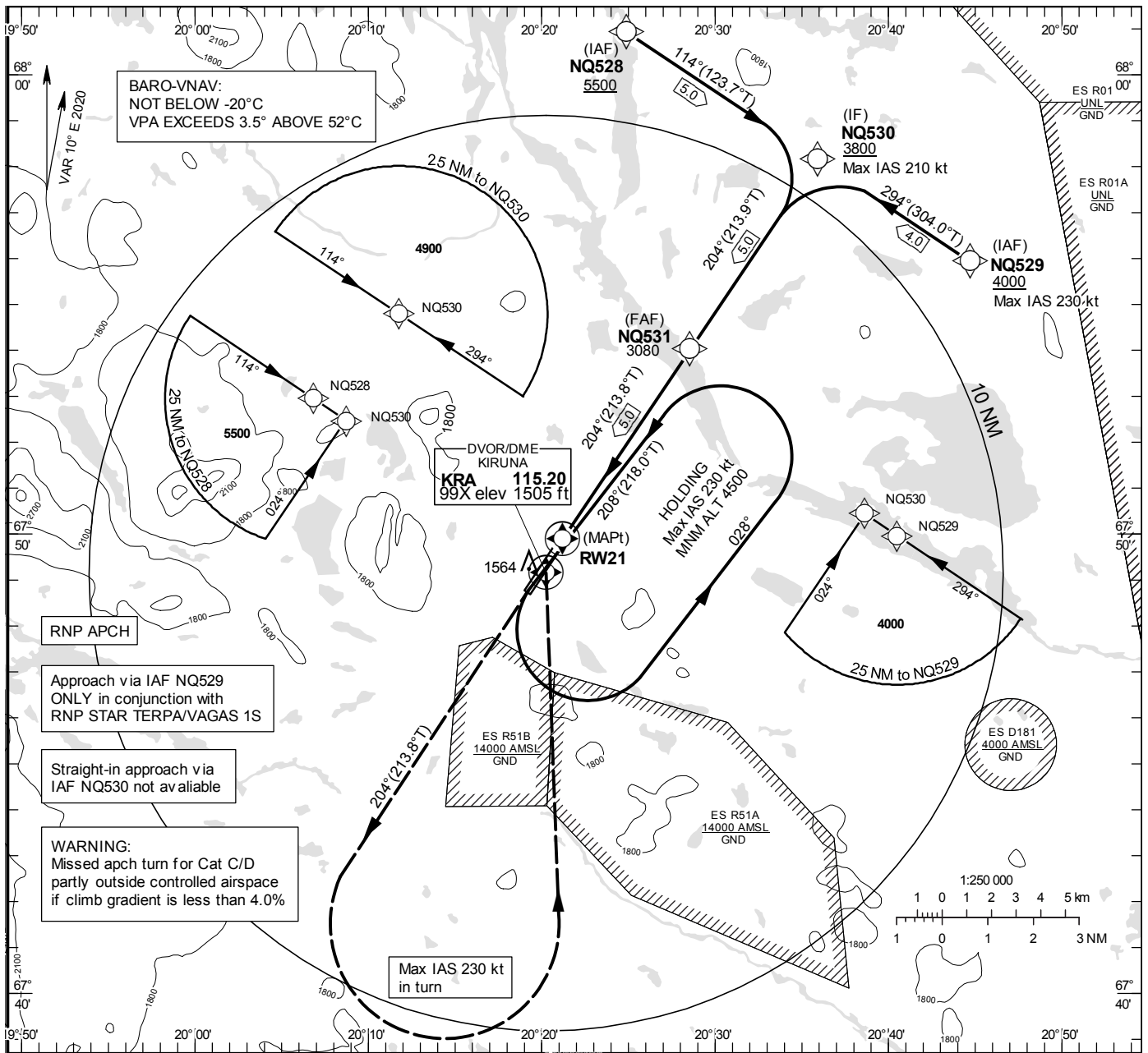


INSTRUMENT APPROACH CHART – ICAO

THR ELEV 1432.3 ft, AD ELEV 1509 ft
 OCH are related to THR.
 BRG are MAG (True).
 ALT, HGT and ELEV in ft.

KIRUNA TOWER 130.155

RNP RWY 21



Cat of ACFT	OCA (H)				Final approach				Distance FAF-MAPt 5.0 NM							
	A	B	C	D	Dist to RW21 (NM)	4	3	2	1	4	3	2	1			
LNAV/VNAV	1700(270)	1710(280)	1720(290)	1730(300)	ALT	2760	2440	2120	1800	kt	80	100	120	140	160	180
LNAV	1820(390)				Rate of descent	ft/min	425	530	635	745	850	955				

RNP RWY 21 via NQ528

Path Desc	Waypoint Identifier	Fly-over	Course °M(°T)	Dist (NM)	Turn Dir	Altitude	Speed	VPA/RDH	Rec Navaid	Navigation Specification
IF	NQ528	-	-	-	-	+5500	-	-	-	RNP APCH
TF	NQ530	-	114°(123.7°)	5.0	-	+3800	-210	-	-	RNP APCH

RNP RWY 21 via NQ529

Path Desc	Waypoint Identifier	Fly-over	Course °M(°T)	Dist (NM)	Turn Dir	Altitude	Speed	VPA/RDH	Rec Navaid	Navigation Specification
IF	NQ529	-	-	-	-	+4000	-230	-	-	RNP APCH
TF	NQ530	-	294°(304.0°)	4.0	-	+3800	-210	-	-	RNP APCH

Path Desc	Waypoint Identifier	Fly-over	Course °M(°T)	Dist (NM)	Turn Dir	Altitude	Speed	VPA/RDH	Rec Navaid	Navigation Specification
IF	NQ530	-	-	-	-	+3800	-	-	-	RNP APCH
TF	NQ531	-	204°(213.9°)	5.0	-	@3080	-	-	-	RNP APCH
TF	RW21	Y	204°(213.8°)	5.0	-	@1482	-	-3.0/50	-	RNP APCH
CA	-	-	204°(213.8°)	-	-	@4000	-	-	-	RNP APCH
DF	KRA	Y	-	-	L	+4500	-230	-	-	RNP APCH
HM	KRA	Y	208°(218.0°)	-	L	+4500	-230	-	-	RNAV 1