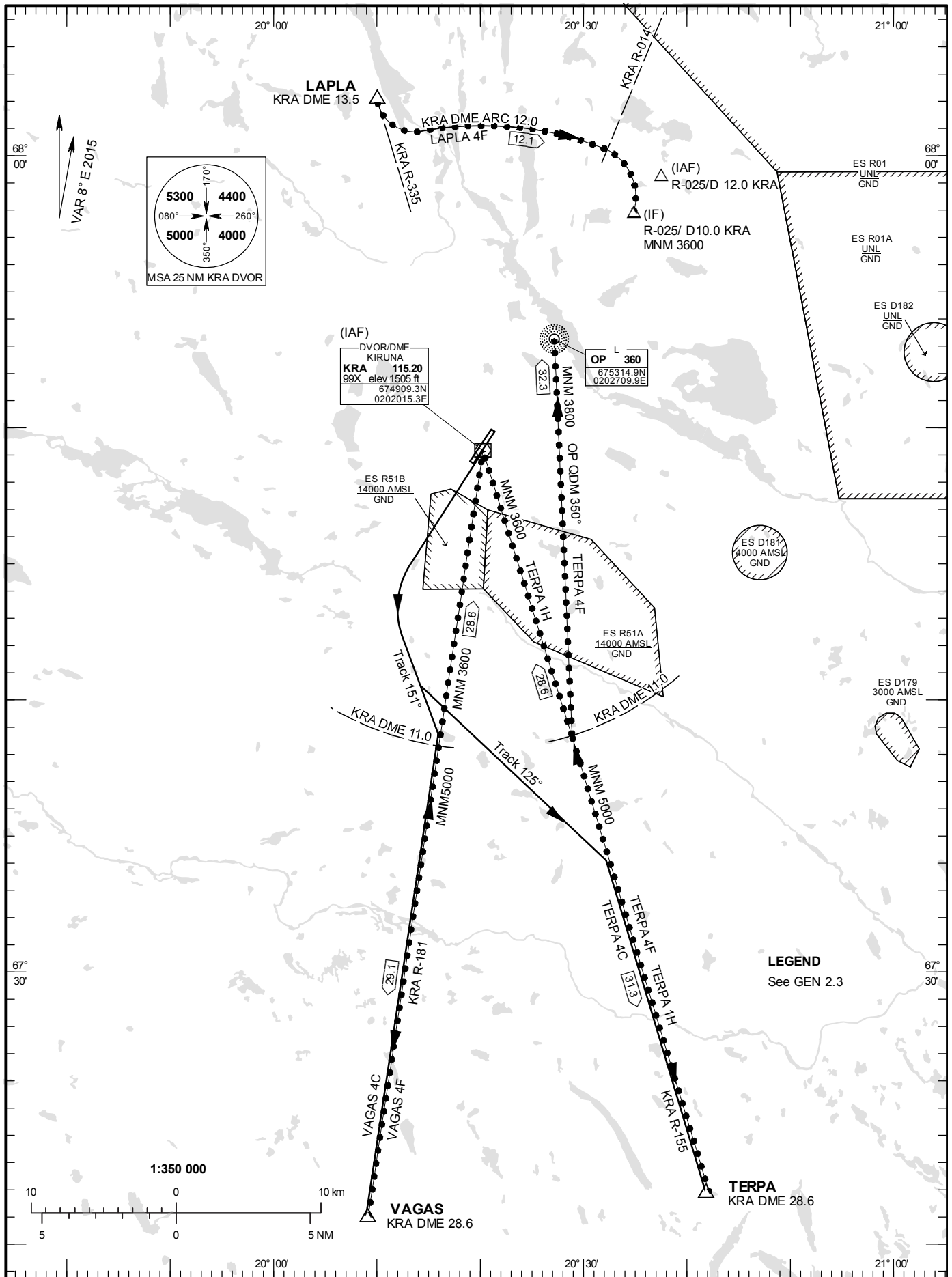


**STANDARD INSTRUMENT
DEPARTURE AND ARRIVAL
CHART (SID/STAR) - ICAO**

HGT and ALT in ft
BRG are MAG
TA 6000 ft AMSL

KIRUNA TOWER 130.155

SID and STAR RWY 21



DEPARTURE (SID) RWY 21

TERPA FOUR CHARLIE DEPARTURE (TERPA 4C)

Straight ahead to 2800 ft. Turn left to track 125°, intercept KRA R-155 and proceed to TERPA.

VAGAS FOUR CHARLIE DEPARTURE (VAGAS 4C)

Straight ahead to 2800 ft. Turn left to track 151°, intercept KRA R-181 and proceed to VAGAS.

ARRIVAL (STAR) RWY 21

LAPLA FOUR FOXTROT ARRIVAL (LAPLA 4F)

At LAPLA turn left to intercept KRA DME ARC 12 and proceed to KRA R-014. Turn right to intercept LOC NQ not below 3600 ft until IF (R-025/D10.0 KRA).

TERPA FOUR FOXTROT ARRIVAL (TERPA 4F)

At TERPA intercept KRA R-155, not below 5000 ft until KRA DME 11.0. At KRA DME 11.0, turn right to intercept OP QDM 350° and proceed to OP, not below 3800ft.

TERPA ONE HOTEL ARRIVAL (TERPA 1H)

At TERPA intercept KRA R-155, not below 5000 ft until KRA DME 11.0. Continue on KRA R-155 until KRA, not below 3600ft.

VAGAS FOUR FOXTROT ARRIVAL (VAGAS 4F)

At VAGAS intercept KRA R-181, not below 5000 ft until KRA DME 11.0. Continue on KRA R-181 until KRA, not below 3600ft.