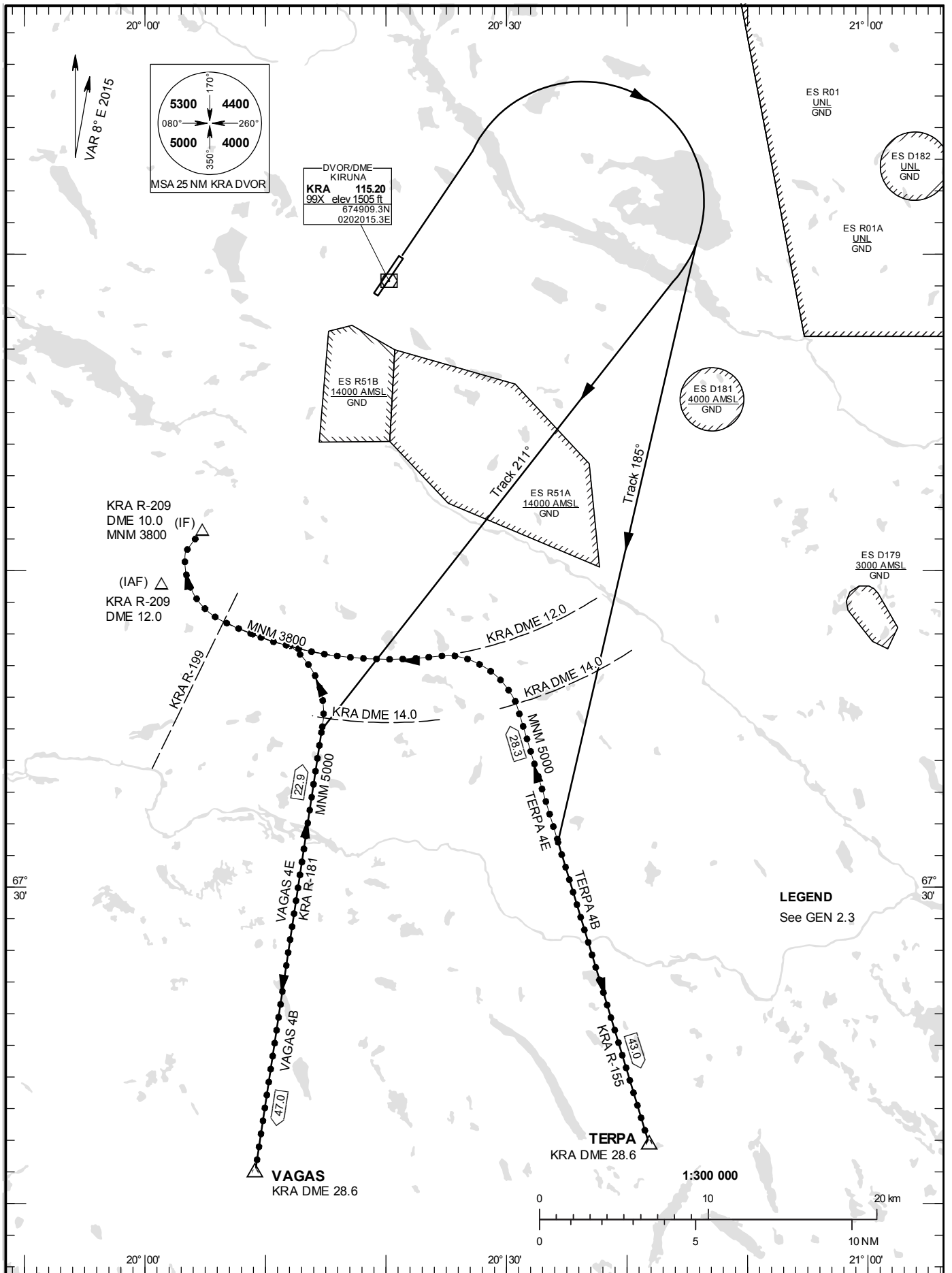


STANDARD INSTRUMENT
DEPARTURE AND ARRIVAL
CHART (SID/STAR) - ICAO

HGT and ALT in ft
BRG are MAG
TA 6000 ft AMSL

KIRUNA TOWER 130.155

SID and STAR RWY 03



DEPARTURE (SID) RWY 03

TERPA FOUR BRAVO DEPARTURE (TERPA 4B)

Straight ahead to 2800 ft. Turn right to track 185°, intercept KRA R-155 and proceed to TERPA.

VAGAS FOUR BRAVO DEPARTURE (VAGAS 4B)

Straight ahead to 2800 ft. Turn right to track 211°, intercept KRA R-181 and proceed to VAGAS.

ARRIVAL (STAR) RWY 03

TERPA FOUR ECHO ARRIVAL (TERPA 4E)

At TERPA intercept KRA R-155, not below 5000 ft until KRA DME 14.0. At KRA DME 14.0, turn left to intercept KRA DME ARC 12 and proceed to KRA R-199. Turn right to intercept KRA R-209, not below 3800 ft until IF (R-209/D10.0 KRA).

VAGAS FOUR ECHO ARRIVAL (VAGAS 4E)

At VAGAS intercept KRA R-181, not below 5000 ft until KRA DME 14.0. At KRA DME 14.0, turn left to intercept KRA DME ARC 12 and proceed to KRA R-199. Turn right to intercept KRA R-209, not below 3800 ft until IF (R-209/D10.0 KRA).