

VISUAL APPROACH CHART - ICAO

1:250000



AD ELEV 192 FEET

ELEV and ALT in ft
HGT in ft above AD ELEV

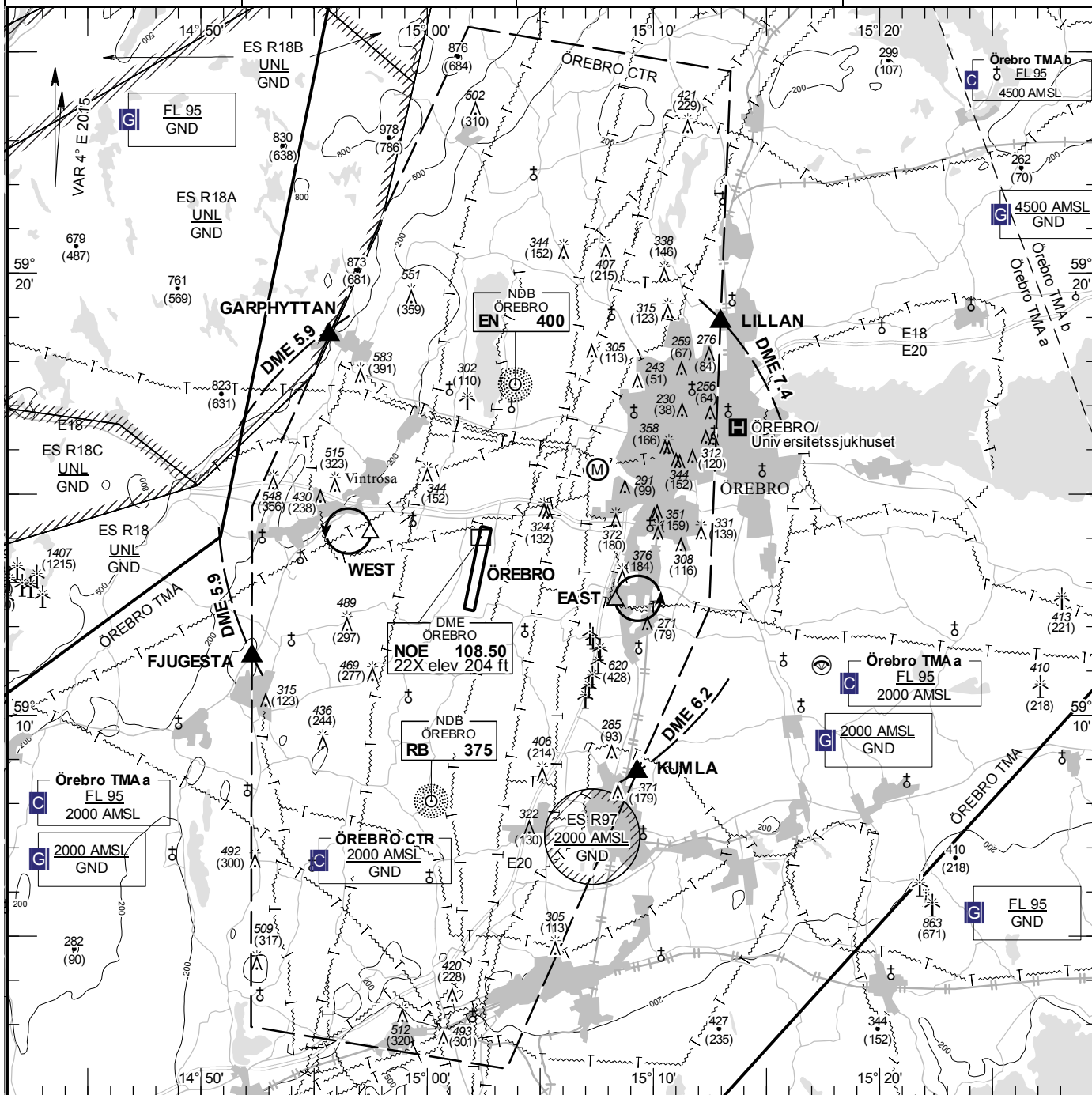
TA 5000 AMSL

ÖREBRO TOWER

120.280
133.605

AD 2 ESOE 6-1

ÖREBRO SWEDEN



Communication failure

- 1 SQUAWK 7600
- 2 Enter CTR via KUMLA – Holding EAST or via FJUGESTA – Holding WEST at or below 1000 ft AMSL to traffic circuit. Transmit blind your intentions.
- 3 Flash LDG-lights and watch TWR for optical signals.

RWY NR	THR ELEV	PAPI (MEHT)
01	161.3 ft	Left/3.00° (51 ft)
19	192.3 ft	Left/3.00° (51 ft)

Entry / exit point

LILLAN	591853N 0151258E
KUMLA	590842N 0150917E
FJUGESTA	591119N 0145215E
GARPHYTTAN	591835N 0145540E

Holding

WEST:	Hold south of Vintrosa, west of point 591406N 0145728E
EAST:	Hold above racecourse, east of point 591235N 0150820E

Legend
See GEN 2.3

Remark

TFC circuit W of field only when TWR is not in operation.