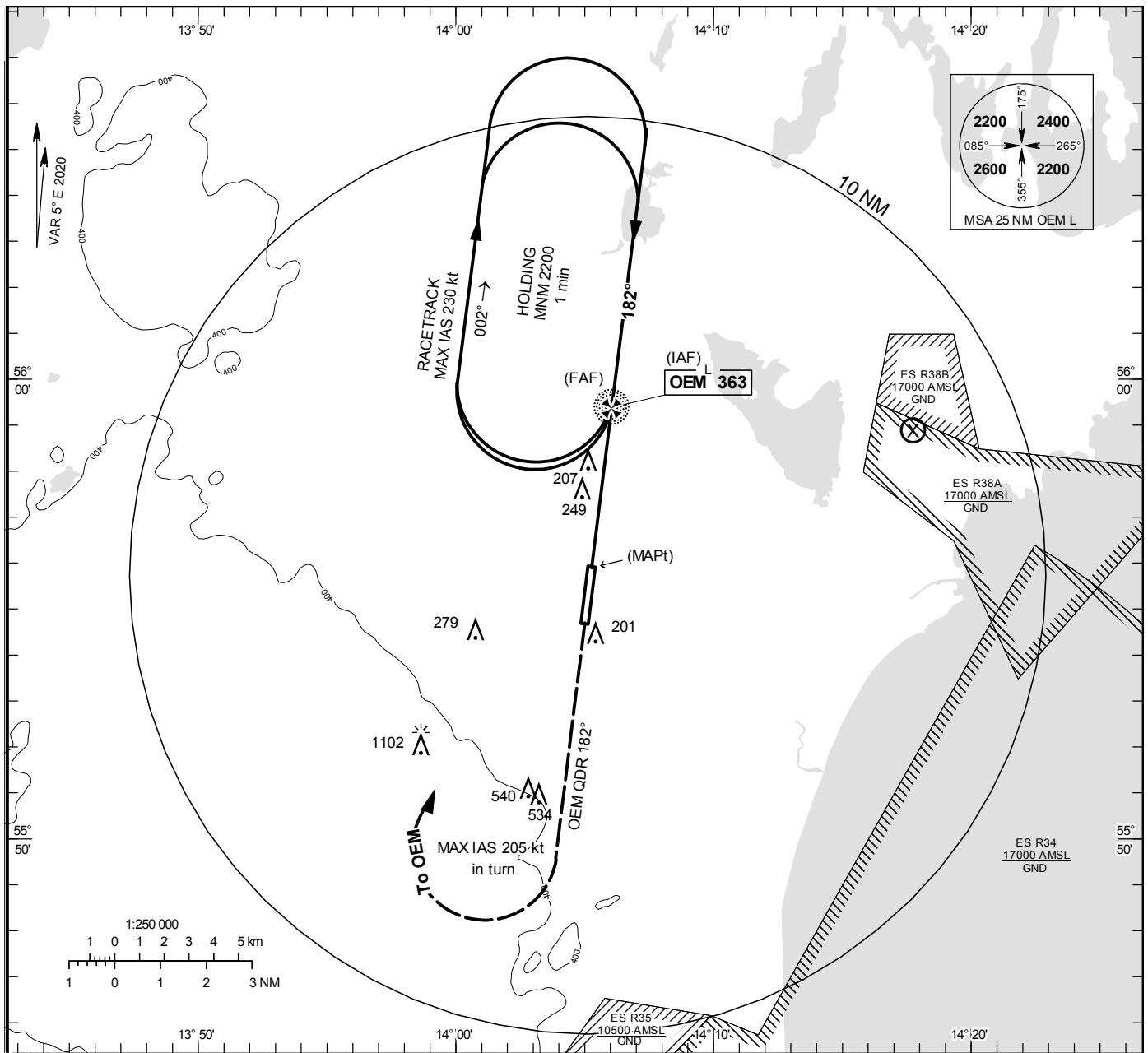


NDB RWY 19

KRISTIANSTAD TOWER 129.355

THR ELEV 73.8 ft, AD ELEV 77 ft
OCH are related to THR.
Circling OCH are related to AD ELEV.
BRG are MAG
ALT. HGT and ELEV in ft.

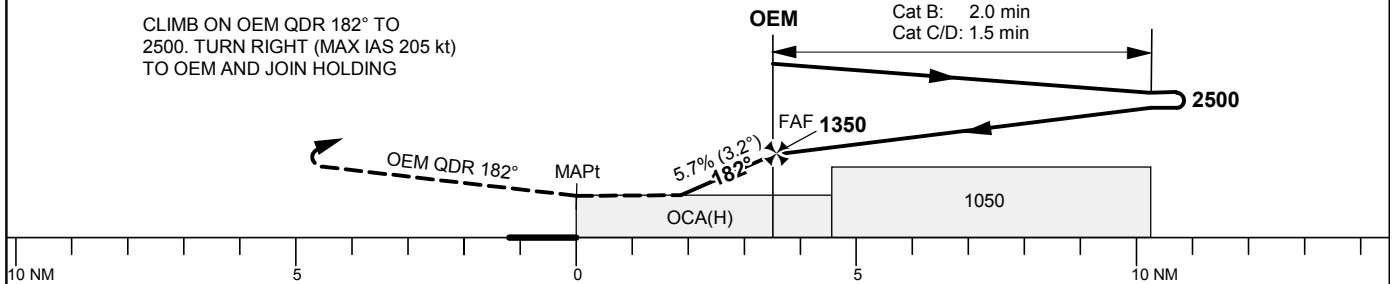
INSTRUMENT
APPROACH
CHART - ICAO



TA 5000 ft AMSL

CLIMB ON OEM QDR 182° TO 2500. TURN RIGHT (MAX IAS 205 kt) TO OEM AND JOIN HOLDING

Cat A: 2.5 min
Cat B: 2.0 min
Cat C/D: 1.5 min



OCA (H)					Final approach	Distance FAF-MAPt 3.5 NM						
Cat of ACFT	A	B	C	D	DME MK NM	3			2			
Straight-in Approach	500(430)				ALT	1110						
Circling	550(480)	580(510)	940(870)	1500(1430)	GS	kt	80	100	120	140	160	180
Circling E RWY	500(430)	510(440)	930(860)	930(860)	Time	min:s	2:39	2:07	1:46	1:31	1:19	1:11
					Rate of descent	ft/min	460	580	695	810	925	1040