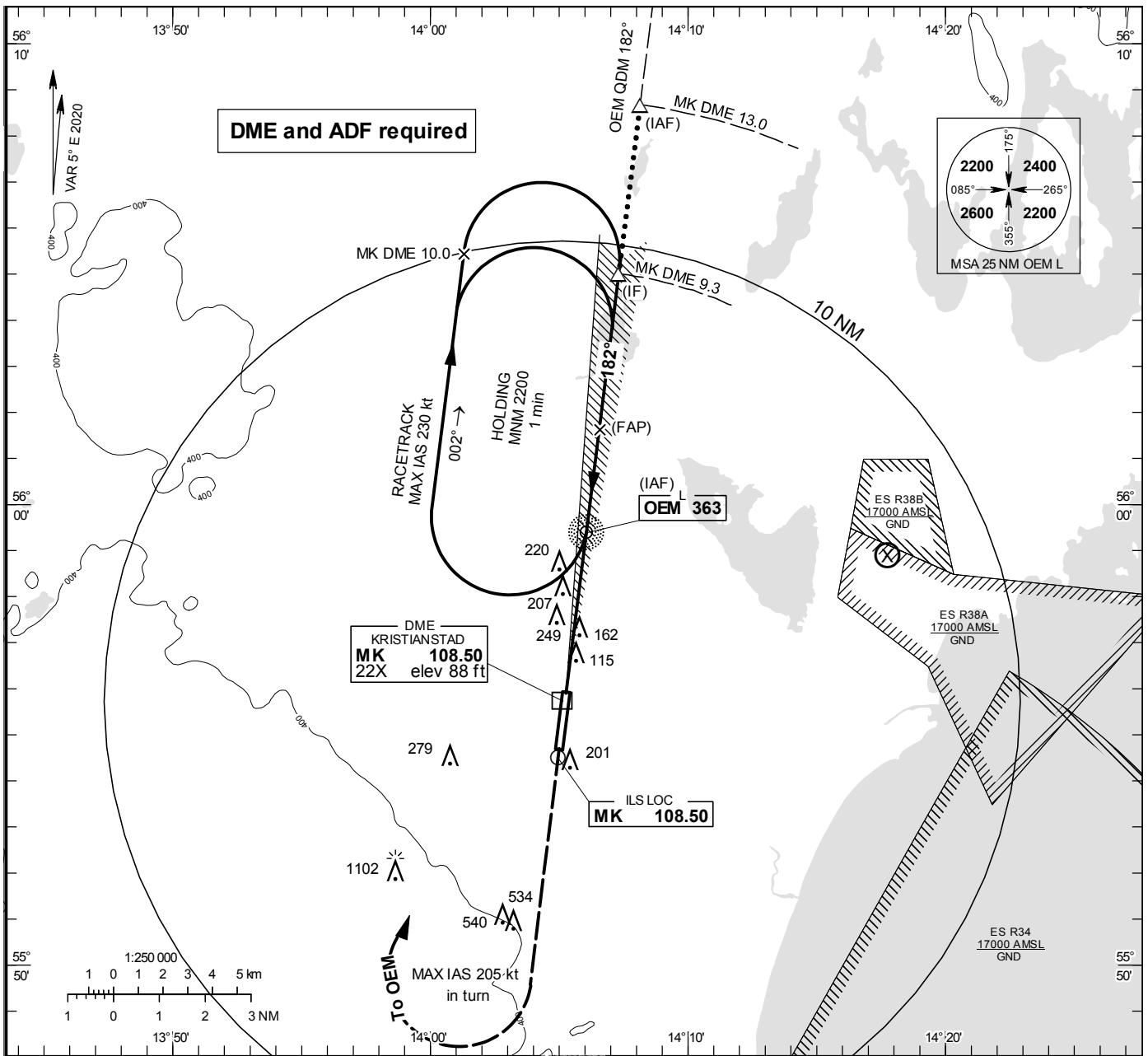


**INSTRUMENT  
APPROACH  
CHART - ICAO**

THR ELEV 73.8 ft, AD ELEV 77 ft  
 OCH are related to THR.  
 Circling OCH are related to AD ELEV.  
 BRG are MAG  
 ALT, HGT and ELEV in ft.

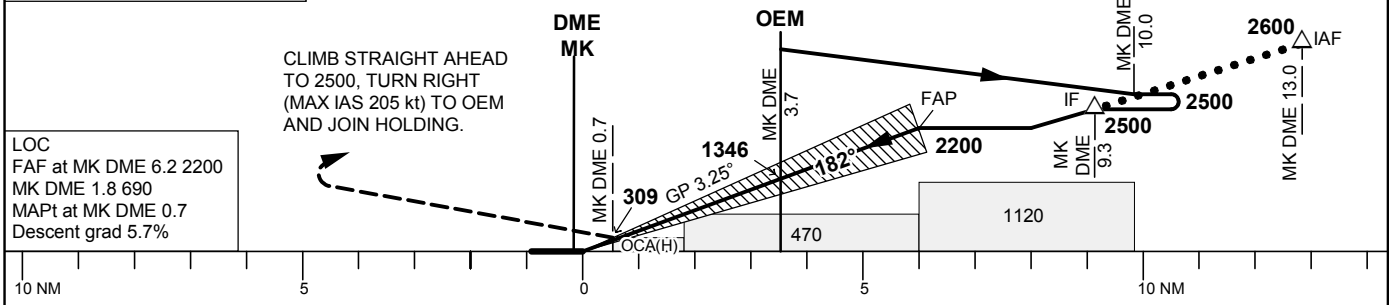
KRISTIANSTAD TOWER 129.355

ILS or LOC RWY 19



TA 5000 ft AMSL RDH 51.8 ft \* Timing not authorized for defining the MAPt

OM REPLACED BY MK DME 3.7  
 MM REPLACED BY MK DME 0.7



OCA (H)					Final approach		LOC Distance FAF-MAPt 5.5 NM*					
Cat of ACFT	A	B	C	D	DME MK NM	6	5	4	3	2	1	
Straight-in Approach	CAT	222(149)	230(157)	240(167)	250(177)	ALT	2140	1790	1450	1100	760	410
	LOC	410(340)				GS	Kt	80	100	120	140	160
Circling	550(480)	580(510)	940(870)	1500(1430)	Time	min:s	4:08	3:18	2:45	2:22	2:04	1:50
Circling E RWY	500(430)	510(440)	930(860)	930(860)	Rate of descent	ft/min	460	575	690	805	920	1035