

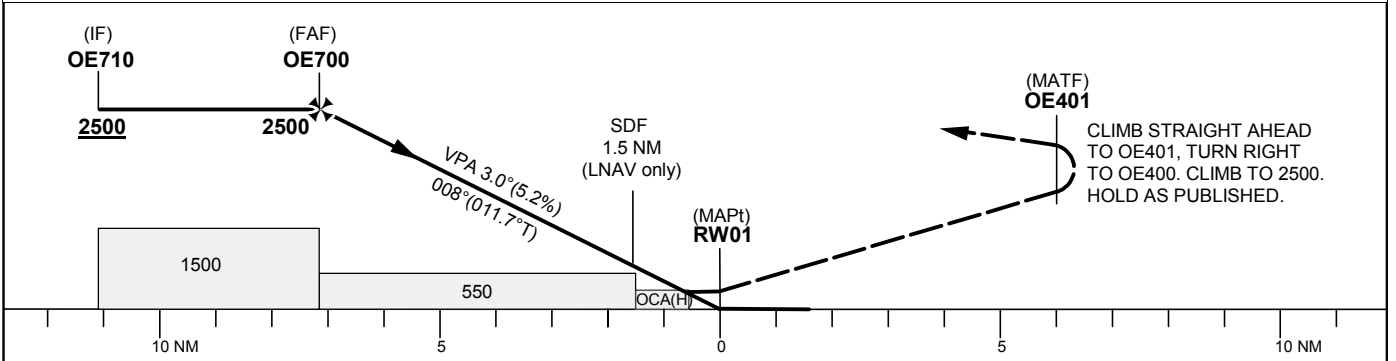
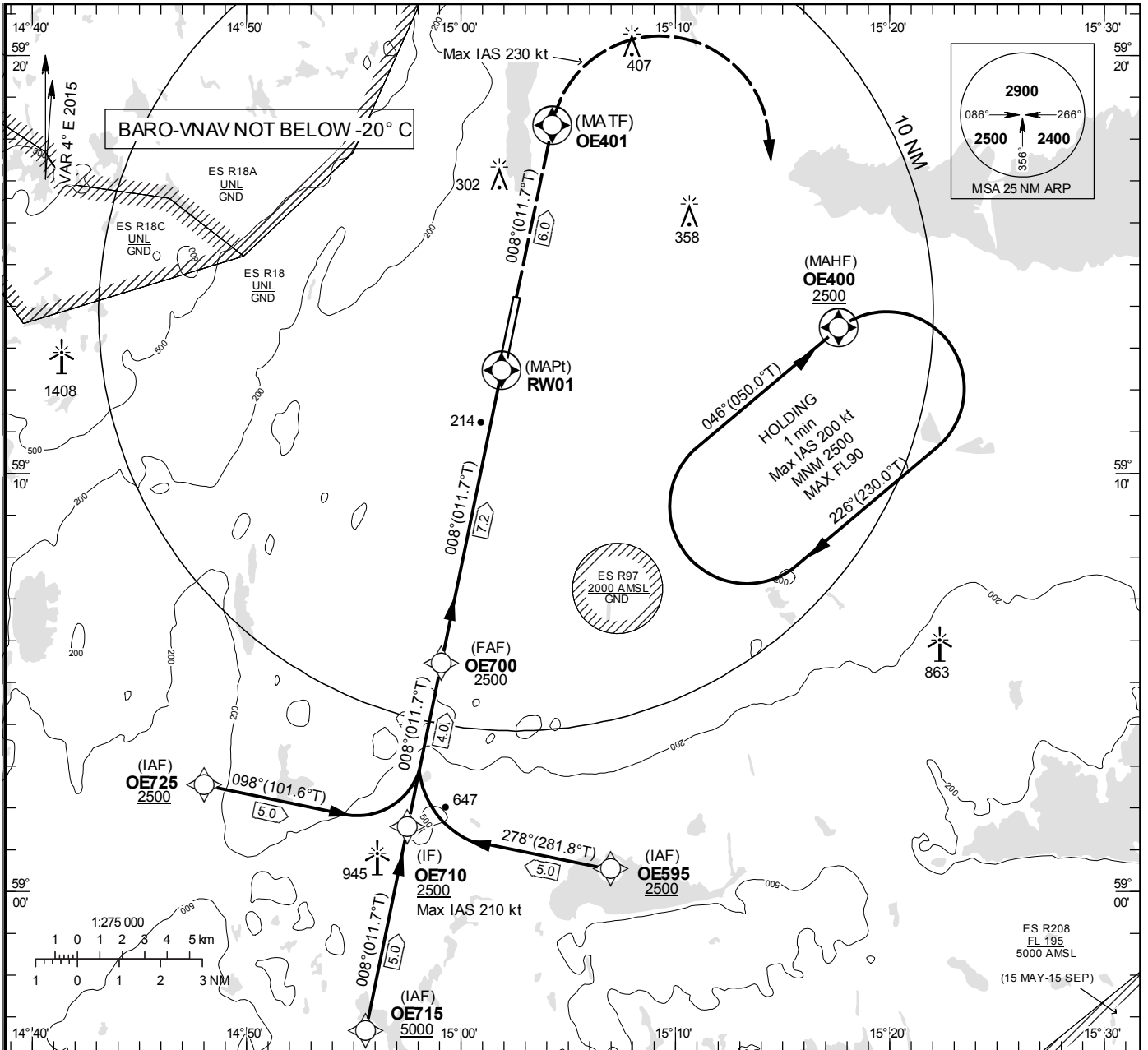
**INSTRUMENT
APPROACH
CHART – ICAO**

THR ELEV 161.3 ft, AD ELEV 192 ft
OCH are related to THR.
BRG are MAG (True).
ALT, HGT and ELEV in ft.

ÖREBRO TOWER 120.280

RNP RWY 01

EGNOS Ch 44271 E 01A



RNP RWY 01 via OE595

Path Desc	Waypoint Identifier	Fly-over	Course °M(°T)	Dist/ Time	Turn Dir	Altitude	Speed	VPA/ RDH	Rec Navaid	Navigation Specification
IF	OE595	-	-	-	-	+2500	-	-	-	RNP APCH
TF	OE710	-	278°(281.8°)	5.0 NM	R	+2500	-210	-	-	RNP APCH
TF	OE700	-	008°(011.7°)	4.0 NM	-	2500	-	-	-	RNP APCH
TF	RW01	Y	008°(011.7°)	7.2 NM	-	216	-	-3.0/54	-	RNP APCH
TF	OE401	Y	008°(011.7°)	6.0 NM	-	-	-	-	-	RNP APCH
DF	OE400	Y	-	-	R	+2500	-	-	-	RNP APCH
HM	OE400	Y	046°(050.0°)	1 min	R	+2500	-200	-	-	RNAV 1

RNP RWY 01 via OE715

Path Desc	Waypoint Identifier	Fly-over	Course °M(°T)	Dist/ Time	Turn Dir	Altitude	Speed	VPA/ RDH	Rec Navaid	Navigation Specification
IF	OE715	-	-	-	-	+5000	-	-	-	RNP APCH
TF	OE710	-	008°(011.7°)	5.0 NM	-	+2500	-210	-	-	RNP APCH
TF	OE700	-	008°(011.7°)	4.0 NM	-	2500	-	-	-	RNP APCH
TF	RW01	Y	008°(011.7°)	7.2 NM	-	216	-	-3.0/54	-	RNP APCH
TF	OE401	Y	008°(011.7°)	6.0 NM	-	-	-	-	-	RNP APCH
DF	OE400	Y	-	-	R	+2500	-	-	-	RNP APCH
HM	OE400	Y	046°(050.0°)	1 min	R	+2500	-200	-	-	RNAV 1

RNP RWY 01 via OE725

Path Desc	Waypoint Identifier	Fly-over	Course °M(°T)	Dist/ Time	Turn Dir	Altitude	Speed	VPA/ RDH	Rec Navaid	Navigation Specification
IF	OE725	-	-	-	-	+2500	-	-	-	RNP APCH
TF	OE710	-	098°(101.6°)	5.0 NM	L	+2500	-210	-	-	RNP APCH
TF	OE700	-	008°(011.7°)	4.0 NM	-	2500	-	-	-	RNP APCH
TF	RW01	Y	008°(011.7°)	7.2 NM	-	216	-	-3.0/54	-	RNP APCH
TF	OE401	Y	008°(011.7°)	6.0 NM	-	-	-	-	-	RNP APCH
DF	OE400	Y	-	-	R	+2500	-	-	-	RNP APCH
HM	OE400	Y	046°(050.0°)	1 min	R	+2500	-200	-	-	RNAV 1

FAS Data Block

RNP RWY 01

Input data

Operation Type	0
SBAS Provider	1
Airport Identifier	ESOE
Runway	01
Runway Direction	0
Approach Performance Designator	0
Route Indicator	
Reference Path Data Selector	0
Reference Path Identifier	E01A
LTP/FTP Latitude	591227.1995N
LTP/FTP Longitude	0150153.1520E
LTP/FTP Ellipsoidal Height (metres)	77.9
FPAP Latitude	591410.6855N
Delta FPAP Latitude (seconds)	103.4860
FPAP Longitude	0150234.8925E
Delta FPAP Longitude (seconds)	41.7405
Threshold Crossing Height	16.6
TCH Units Selector	1
Glidepath Angle (degrees)	3.00
Course Width (metres)	105.00
Length Offset (metres)	0
HAL (metres)	40.0
VAL (metres)	50.0

Output data

Data Block	10 05 0F 13 05 01 00 00 01 31 30 05 7F BC 68 19 00 67 73 06 0B 17 7C 28 03 19 46 01 4C 81 2C 01 64 00 C8 FA FC EB 6B 03
Calculated CRC Value	FCEB6B03

Required Additional Data

ICAO Code	ES
LTP/FTP Orthometric Height (metres)	49.2
FPAP Orthometric Height (metres)	58.5