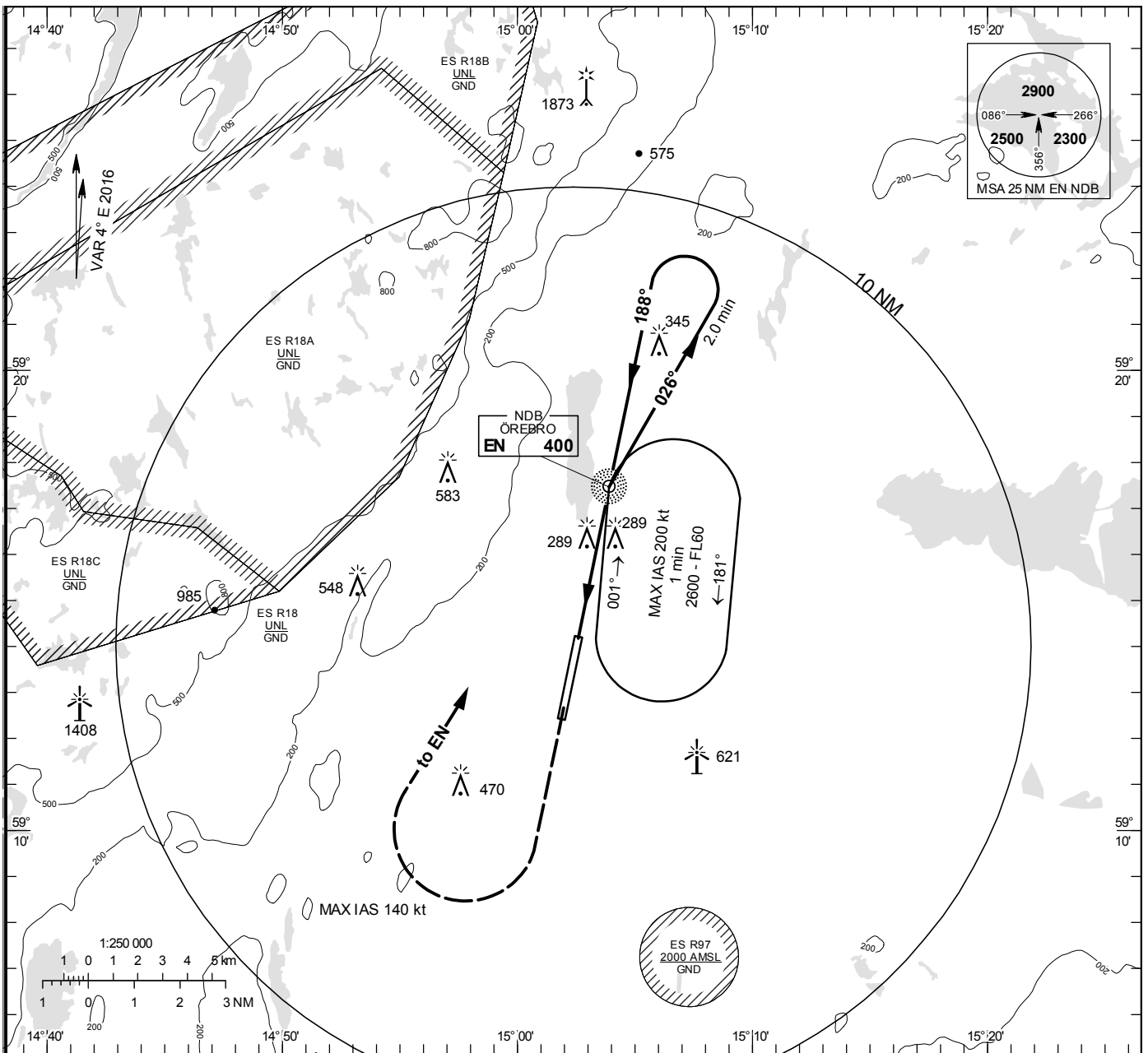


**INSTRUMENT
APPROACH
CHART – ICAO**

THR ELEV 192.3 ft, AD ELEV 192 ft
 OCH are related to THR.
 Circling OCH are related to AD ELEV.
 BRG are MAG
 ALT. HGT and ELEV in ft.

ÖREBRO TOWER 120.280

NDB RWY 19 Cat A/B

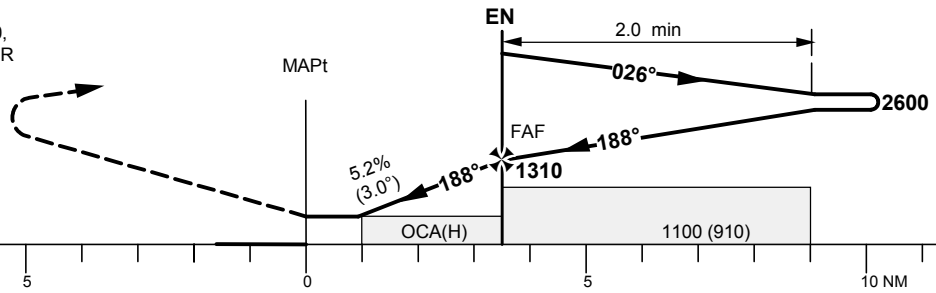


TA 5000 ft AMSL

MAX SPEED within missed approach turn 140 kt IAS

NO TURN BEFORE MAPt

CLIMB ON TRACK 188° TO 1500,
 TURN RIGHT TO EN AND ENTER
 HOLDING CLIMBING TO 2600.



Cat of ACFT	OCA (H)		Final approach		Distance FAF-MAPt 3.36 NM						
	A	B	GS	kt	70	80	90	100	110	120	130
Straight-in Approach	540 (348)		Time	min:s	2:53	2:31	2:14	2:01	1:50	1:41	1:33
Circling	620 (428)	690 (498)	Rate of descent	ft/min	370	420	475	525	580	630	685