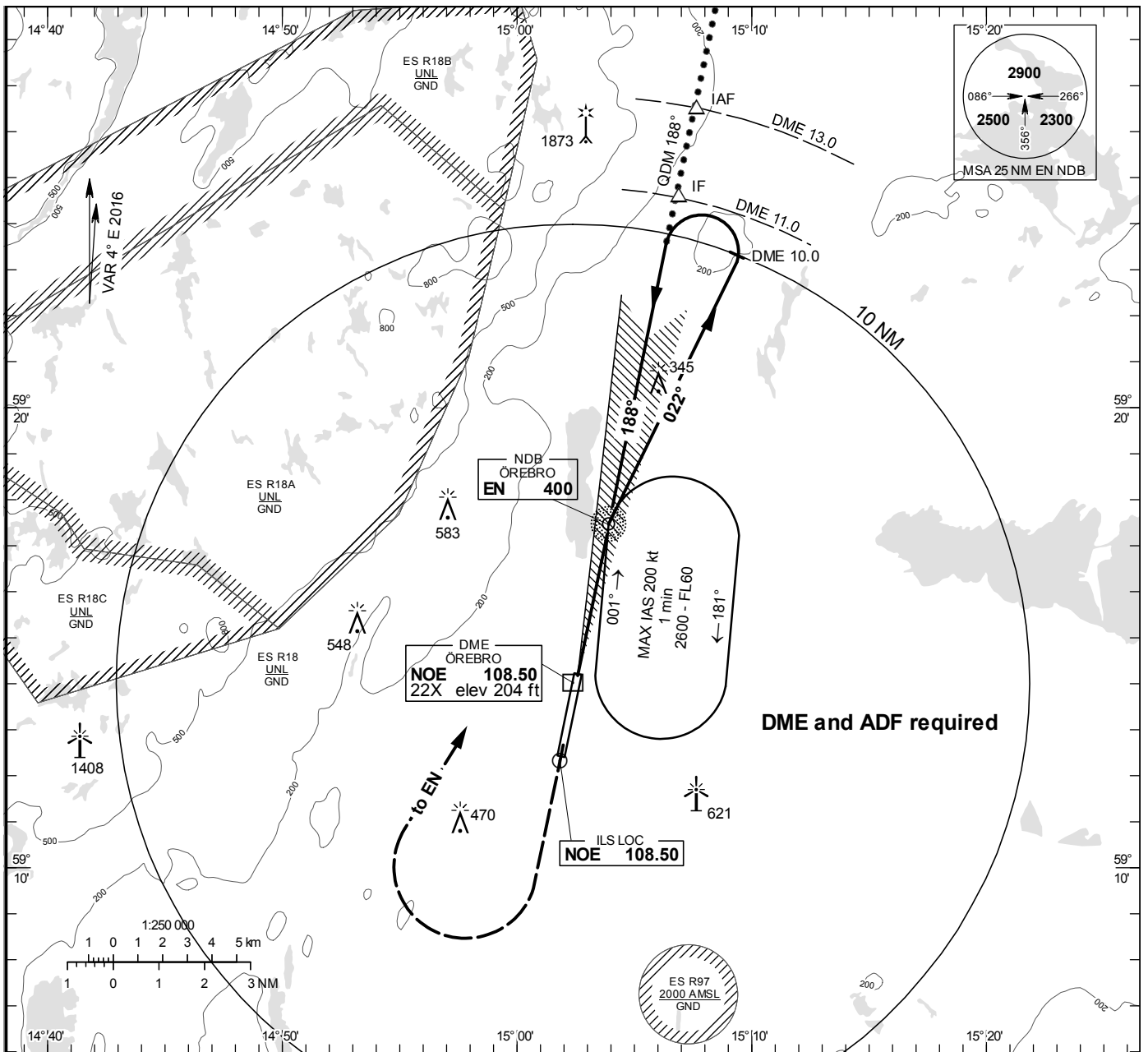


INSTRUMENT APPROACH CHART – ICAO

THR ELEV 192.3 ft, AD ELEV 192 ft
 OCH are related to THR.
 Circling OCH are related to AD ELEV.
 BRG are MAG
 ALT, HGT and ELEV in ft.

ÖREBRO TOWER 120.280

ILS RWY 19 Cat A/B

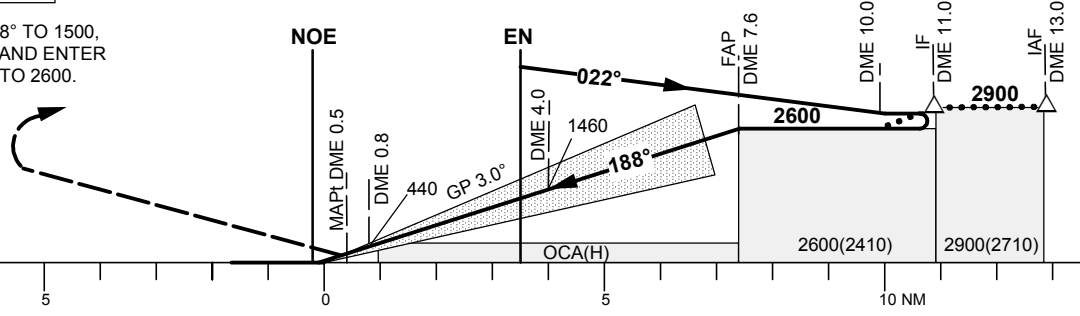


TA 5000 ft AMSL RDH 54.1 ft *Timing not authorized for defining the MAPt

NO TURN BEFORE MAPt

CLIMB ON TRACK 188° TO 1500,
 TURN RIGHT TO EN AND ENTER
 HOLDING CLIMBING TO 2600.

LOC
 FAF at DME 7.6 2600
 MAPt at DME 0.5
 Descent grad. 5.2%



		OCA (H)		Final approach	Distance FAF-MAPt 7.1 NM*						
		A	B	DME NM	7	6	5	4	3	2	1
Straight-in Approach	Cat I	345 (153)	355 (163)	ALT	2420	2100	1780	1460	1150	830	510
	LOC	540 (348)		GS	kt	70	80	90	110	120	130
Circling		620 (428)	690 (498)	Rate of descent	ft/min	370	425	480	580	635	690