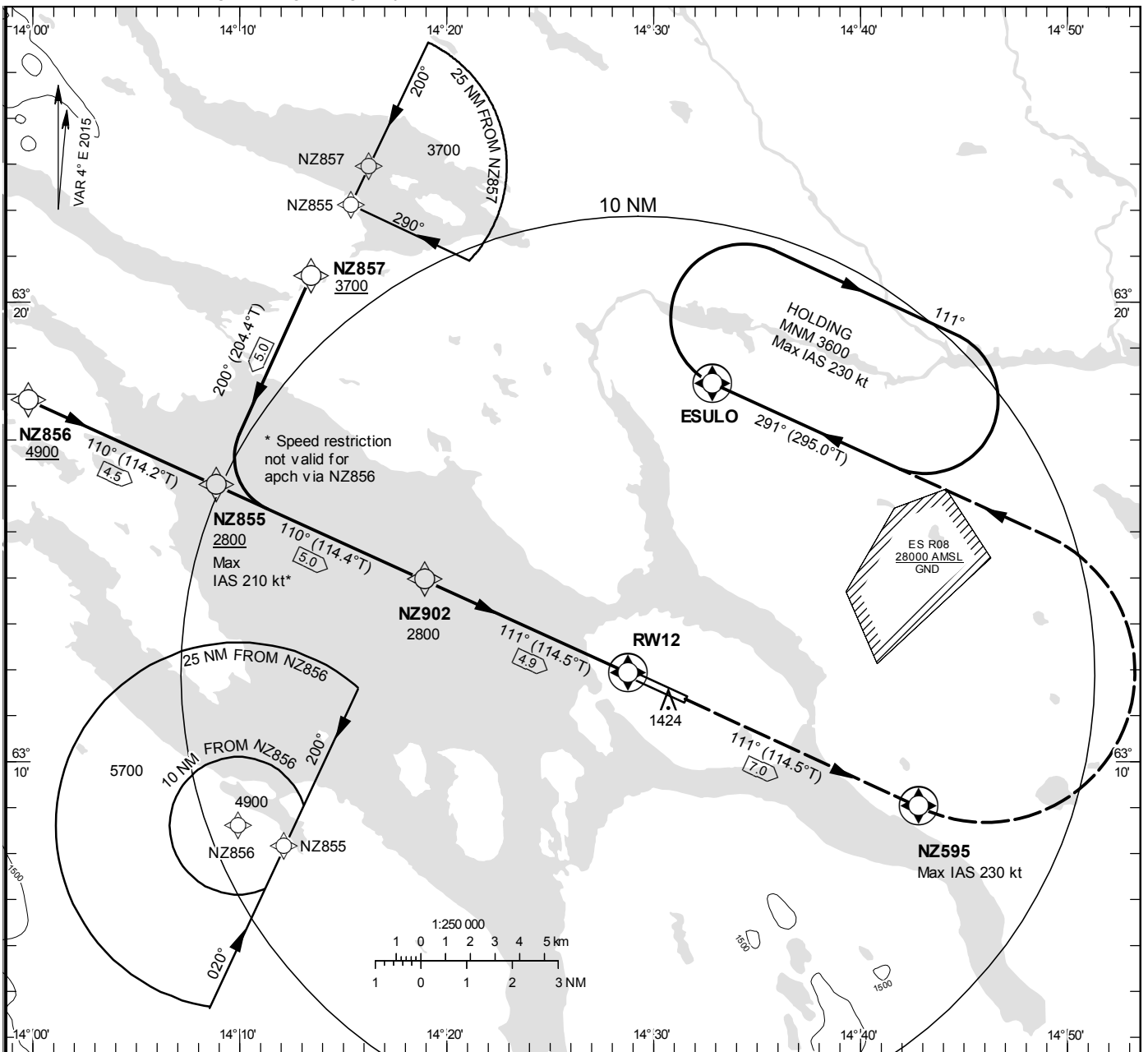


**INSTRUMENT
 APPROACH
 CHART – ICAO**

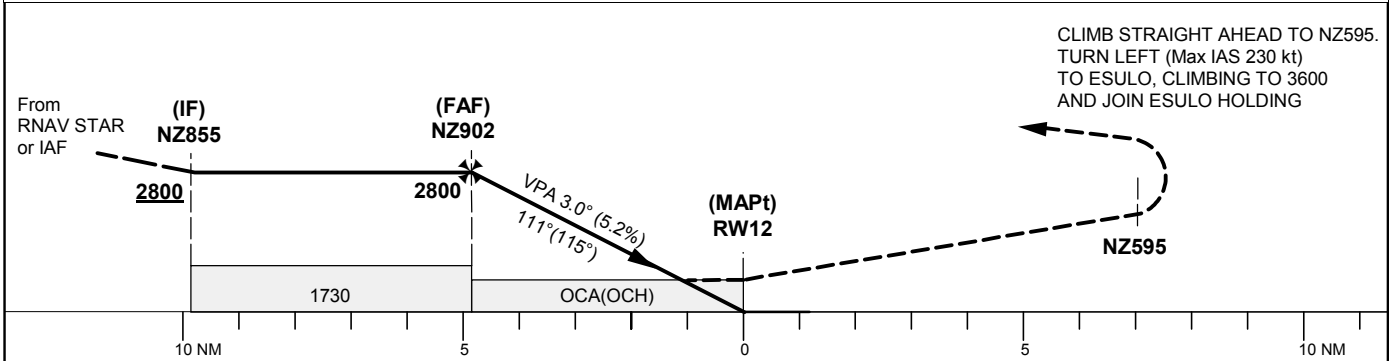
THR ELEV 1194.3 ft, AD ELEV 1233 ft
 OCH are related to THR.
 BRG are MAG (True).
 ALT, HGT and ELEV in ft.
BARO-VNAV NOT BELOW -20° C

ÖSTERSUND TOWER 135.655

RNP RWY 12



TA 6000 ft AMSL RDH 50.0 ft



Cat of ACFT	OCA (H)				Final approach		Distance FAF-MAPt 4.9 NM				
	A	B	C	D	Dist to RWY12 NM	4	3	2			
LNAV/VNAV	1430(236)	1440(246)	1460(266)	1490(296)	ALT	2520	2200	1880			
LNAV	1570(376)				GS	80	100	120	140	160	180
					Rate of descent	ft/min	425	530	635	745	850

RNP RWY 12

RNP RWY 12 via RNAV STAR DIGLO/OSLAV

Path Term	Waypoint Identifier	Fly-over	Course °M(°T)	Dist (NM)	Turn Dir	Rest Alts (ft AMSL)	Speed Limits (kt)	VPA/RDH	Rec Navaid	Navigation Specification
IF	NZ855	-	-	-	-	+2800	-210	-	-	RNP APCH
TF	NZ902	-	110°(114.4°)	5.0	-	@2800	-	-	-	RNP APCH
TF	RW12	Y	111°(114.5°)	4.9	-	@1244	-	-3.0/50	-	RNP APCH
CF	NZ595	Y	111°(114.5°)	7.0	-	-	-	-	OSS	RNP APCH
DF	ESULO	Y	-	-	L	+3600	-230	-	-	RNP APCH
HM	ESULO	Y	291°(295.0°)	-	R	+3600	-230	-	-	RNAV 1

RNP RWY 12 via IAF NZ856

Path Term	Waypoint Identifier	Fly-over	Course °M(°T)	Dist (NM)	Turn Dir	Rest Alts (ft AMSL)	Speed Limits (kt)	VPA/RDH	Rec Navaid	Navigation Specification
IF	NZ856	-	-	-	-	+4900	-	-	-	RNP APCH
TF	NZ855	-	110°(114.2°)	4.5	-	+2800	-	-	-	RNP APCH
TF	NZ902	-	110°(114.4°)	5.0	-	@2800	-	-	-	RNP APCH
TF	RW12	Y	111°(114.5°)	4.9	-	@1244	-	-3.0/50	-	RNP APCH
CF	NZ595	Y	111°(114.5°)	7.0	-	-	-	-	OSS	RNP APCH
DF	ESULO	Y	-	-	L	+3600	-230	-	-	RNP APCH
HM	ESULO	Y	291°(295.0°)	-	R	+3600	-230	-	-	RNAV 1

RNP RWY 12 via IAF NZ857

Path Term	Waypoint Identifier	Fly-over	Course °M(°T)	Dist (NM)	Turn Dir	Rest Alts (ft AMSL)	Speed Limits (kt)	VPA/RDH	Rec Navaid	Navigation Specification
IF	NZ857	-	-	-	-	+3700	-	-	-	RNP APCH
TF	NZ855	-	200°(204.4°)	5.0	-	+2800	-210	-	-	RNP APCH
TF	NZ902	-	110°(114.4°)	5.0	L	@2800	-	-	-	RNP APCH
TF	RW12	Y	111°(114.5°)	4.9	-	@1244	-	-3.0/50	-	RNP APCH
CF	NZ595	Y	111°(114.5°)	7.0	-	-	-	-	OSS	RNP APCH
DF	ESULO	Y	-	-	L	+3600	-230	-	-	RNP APCH
HM	ESULO	Y	291°(295.0°)	-	R	+3600	-230	-	-	RNAV 1