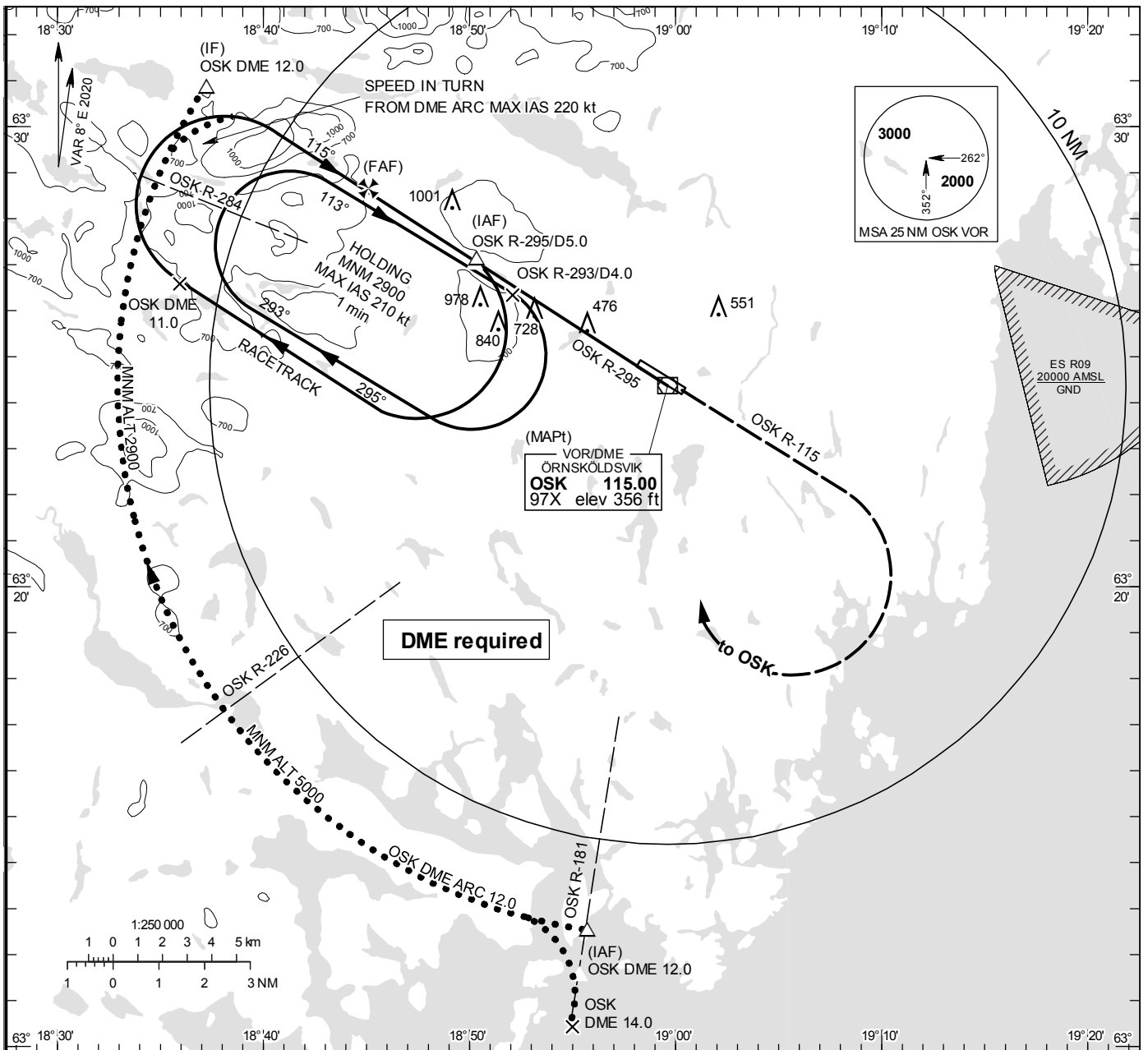


**INSTRUMENT  
APPROACH  
CHART – ICAO**

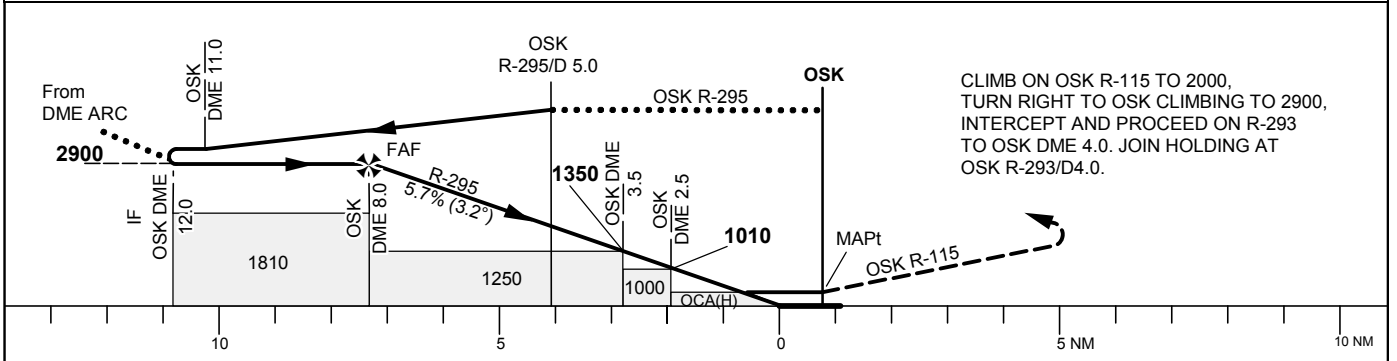
**THR ELEV 354.1 ft, AD ELEV 355 ft**  
 OCH are related to THR.  
 Circling OCH are related to AD ELEV.  
 BRG are MAG  
 ALT. HGT and ELEV in ft.

ÖVIK TOWER 122.255

VOR RWY 12



TA 5000 ft AMSL Final APCH line offset 1° Max speed in racetrack 240 kt IAS \*Timing not authorized for defining the MAPt



Cat of ACFT	OCA (H)				Final approach		Distance FAF-MAPt 8.0 NM*						
	A	B	C	D	DME OSK NM	ALT	7	6	5	4	3	2	
Straight-in Approach	730(380)				2550	2210	1860	1520	1170	830			
Circling	850(500)	1030(680)	1380(1030)	1400(1050)	GS	kt	80	100	120	140	160	180	
					Time	min:s	6:00	4:48	4:00	3:26	3:00	2:40	
					Rate of descent	ft/min	460	575	690	805	920	1035	