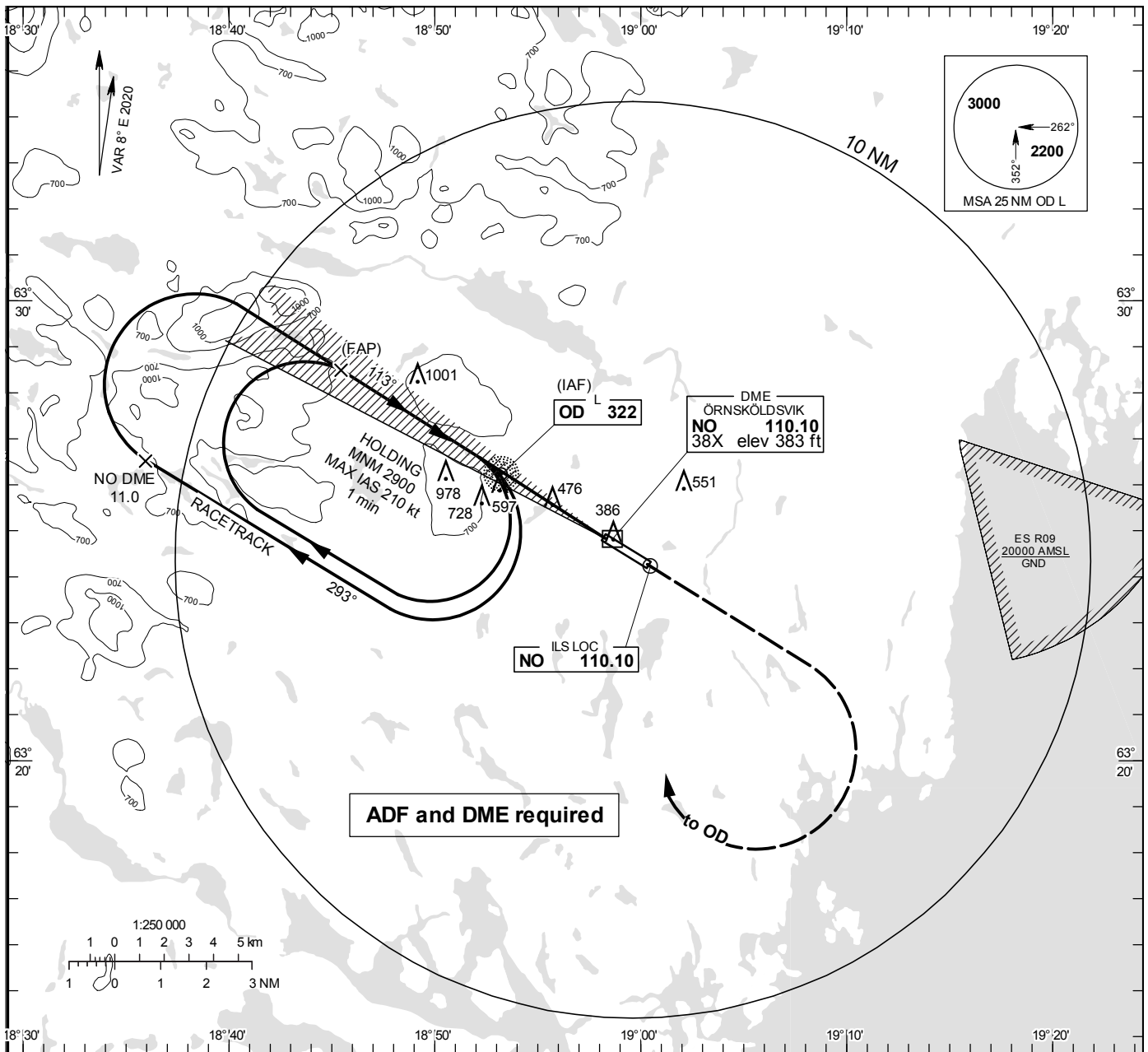


ILS y or LOC y RWY 12

ÖVIK TOWER 122.255

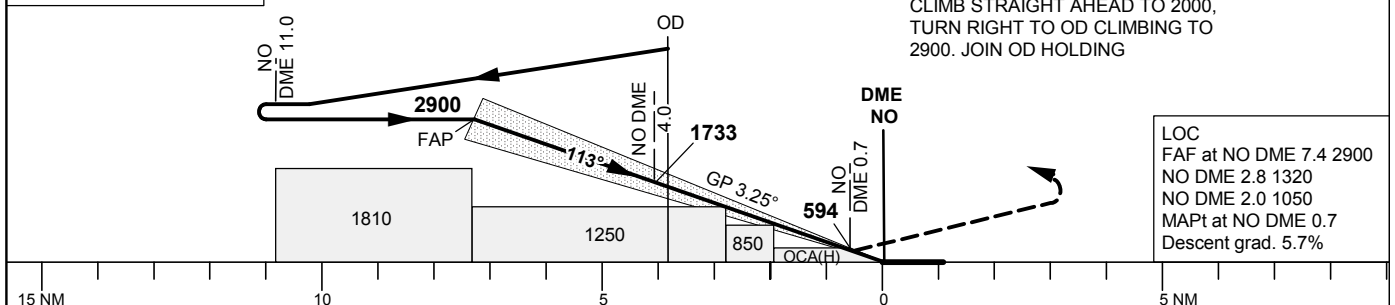
THR ELEV 354.1 ft, AD ELEV 355 ft
 OCH are related to THR.
 Circling OCH are related to AD ELEV.
 BRG are MAG
 ALT. HGT and ELEV in ft.

INSTRUMENT
 APPROACH
 CHART - ICAO



TA 5000 ft AMSL RDH 50.2 ft Max speed in racetrack 240 kt IAS *Timing not authorized for defining the MAPt

OM replaced by NO DME 4.0
 MM replaced by NO DME 0.7



LOC
 FAF at NO DME 7.4 2900
 NO DME 2.8 1320
 NO DME 2.0 1050
 MAPt at NO DME 0.7
 Descent grad. 5.7%

OCA (H)					Final approach						
					LOC Distance FAF-MAPt 6.7 NM*						
Cat of ACFT	A	B	C	D	DME NO NM	7	6	5	4	3	2
Straight-in Approach	498(144)	508(154)	518(164)	528(174)	ALT	2770	2420	2080	1730	1390	1040
Circling	850(500)	1030(680)	1380(1030)	1400(1050)	GS	kt	80	100	120	140	160
					Time	min:s	5:01	4:01	3:21	2:52	2:31
					Rate of descent	ft/min	460	575	690	805	920