

Rättelse till AIP AIRAC AMDT 5/2019

I den distribuerade AIRAC ändringen 5/2019 WEF 15 AUG gäller följande ändring för:

ÖRNSKÖLDSVIK AD (ESNO)

NDB RWY 30:
Felplacerad FAF symbol i kartvyn.

Ersätt sidan i AIRAC AMDT 5/2019 med sidan i denna rättelse.

Remove the following page from the amendment:

AD 2 ESNO 5-5/6

Corrigendum to AIP AIRAC AMDT 5/2019

In the distributed AIRAC amendment 5/2019 WEF 15 AUG the following change apply for;

ÖRNSKÖLDSVIK AD (ESNO)

NDB RWY 30:
Misplaced FAF symbol in the chart view.

Replace the page in the AIRAC AMDT 5/2019 with the page in this corrigendum.

Insert the following page in the amendment:

AD 2 ESNO 5-5/6

Sätt ej in i AIP förrän / Do not insert in AIP until **15 AUG 2019**

For comments, please contact: aip@lfv.se

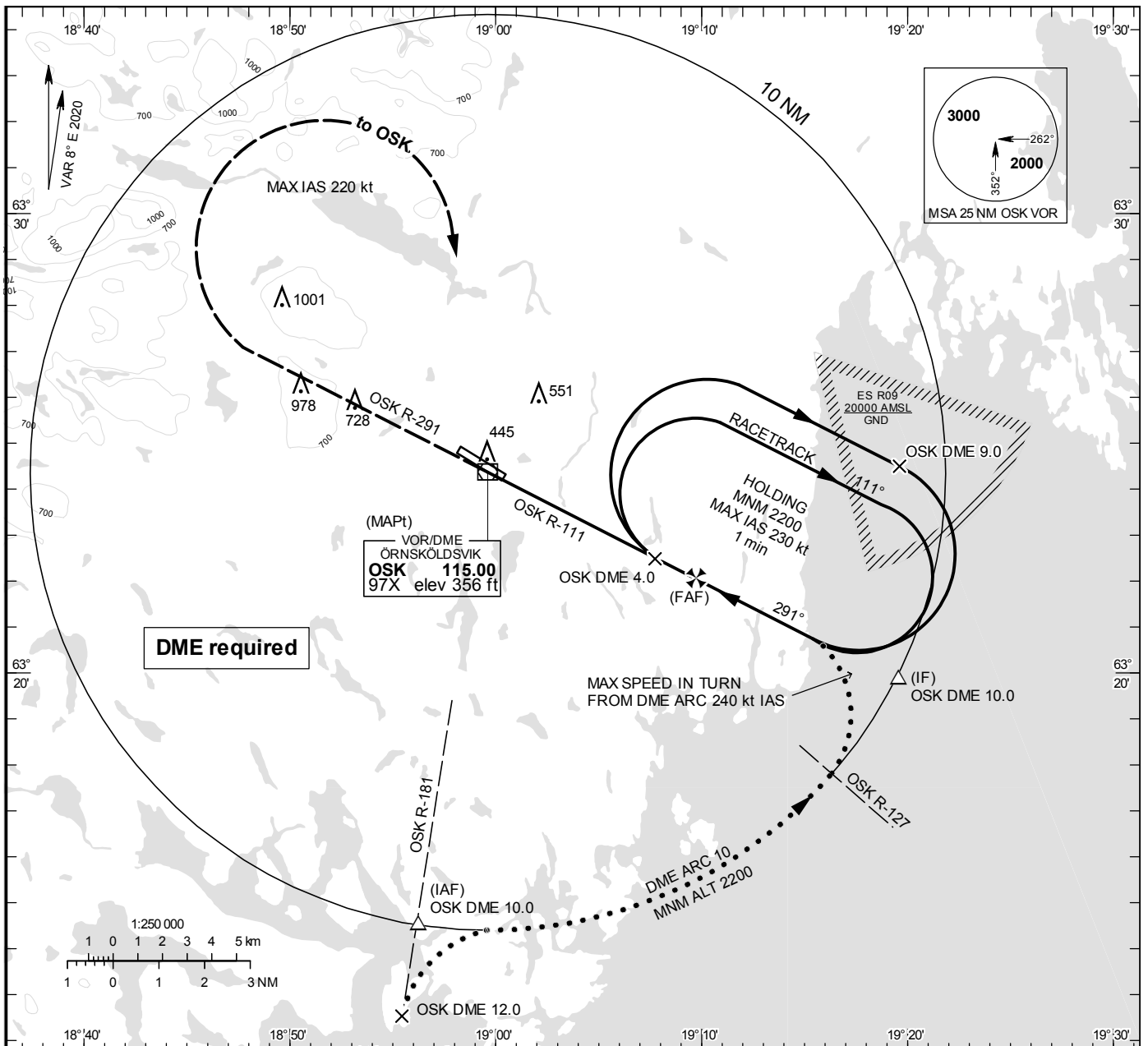
- E N D / S L U T -

**INSTRUMENT
APPROACH
CHART – ICAO**

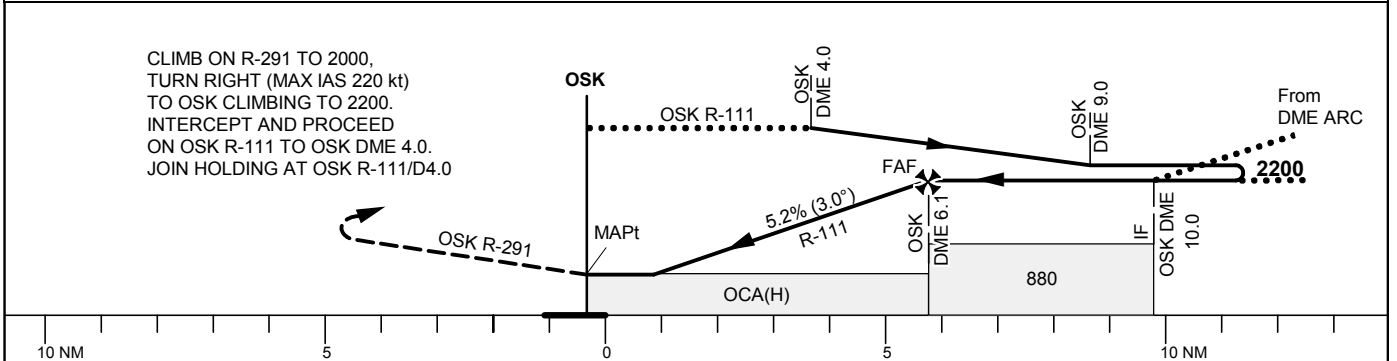
THR ELEV 332 ft, AD ELEV 355 ft
 OCH are related to THR.
 Circling OCH are related to AD ELEV.
 BRG are MAG
 ALT, HGT and ELEV in ft.

ÖVIK TOWER 122.255

VOR RWY 30



TA 5000 Final APCH line offset 3° Missed approach turn limited to MAX IAS 220 kt *Timing not authorized for defining the MAPt



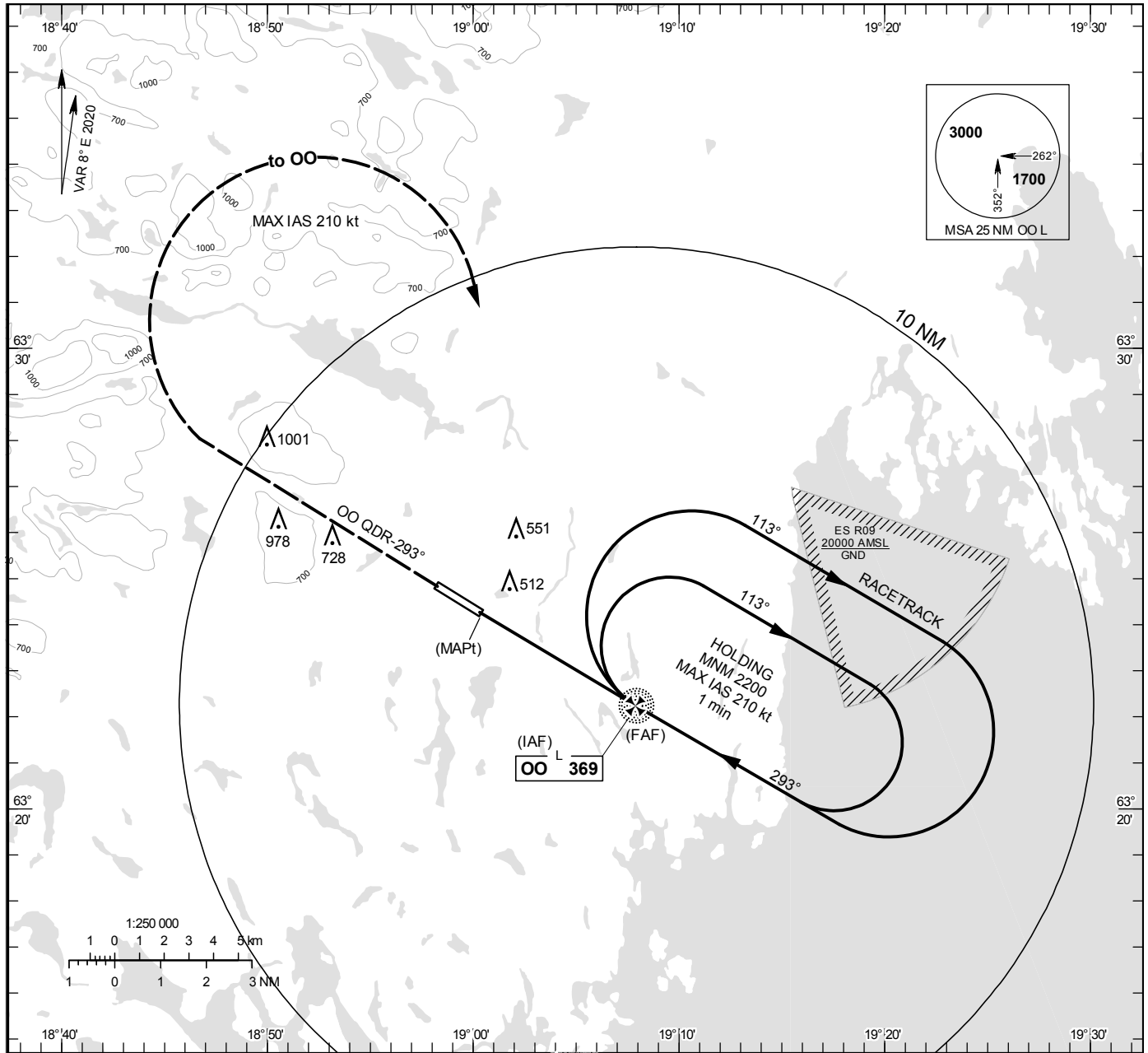
Cat of ACFT	OCA (H)				Final approach							
	A	B	C	D	DME OSK NM	6	5	4	3	2		
Straight-in Approach	700(370)				2180	1860	1540	1230	910			
Circling	850(500)	1030(680)	1380(1030)	1400(1050)	GS	80	100	120	140	160	180	
					Time	min:s	4:33	3:38	3:02	2:36	2:17	2:01
					Rate of descent	ft/min	420	525	630	735	845	950

NDB RWY 30

ÖVIK TOWER 122.255

THR ELEV 332 ft, AD ELEV 355 ft
 OCH are related to THR.
 Circling OCH are related to AD ELEV.
 BRG are MAG
 ALT, HGT and ELEV in ft.

INSTRUMENT
 APPROACH
 CHART – ICAO

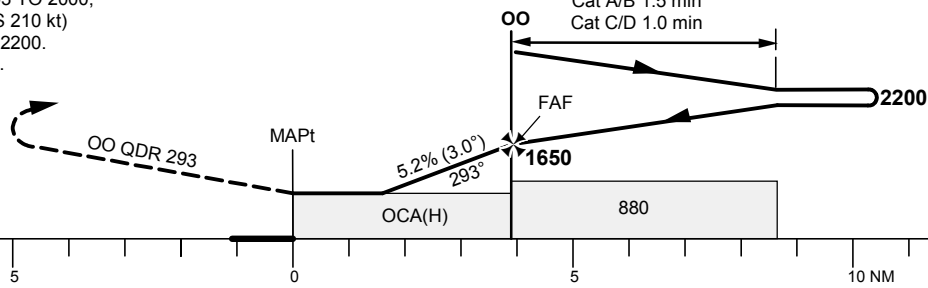


TA 5000 ft AMSL

Final approach line offset 1°

Missed approach turn limited to MAX IAS 210 kt

CLIMB ON OO QDR-293 TO 2000,
 TURN RIGHT (MAX IAS 210 kt)
 TO OO, CLIMBING TO 2200.
 JOIN HOLDING AT OO.



OCA (H)					Final approach	Distance FAF-MAPt 4.0 NM						
Cat of ACFT	A	B	C	D	DME OSK NM	4	3	2				
Straight-in Approach	760(430)				ALT	1540	1230	910				
Circling	850(500)	1030(680)	1380(1030)	1400(1050)	GS	kt	80	100	120	140	160	180
					Time	min:s	3:00	2:24	2:00	1:43	1:30	1:20
					Rate of descent	ft/min	420	525	630	735	845	950