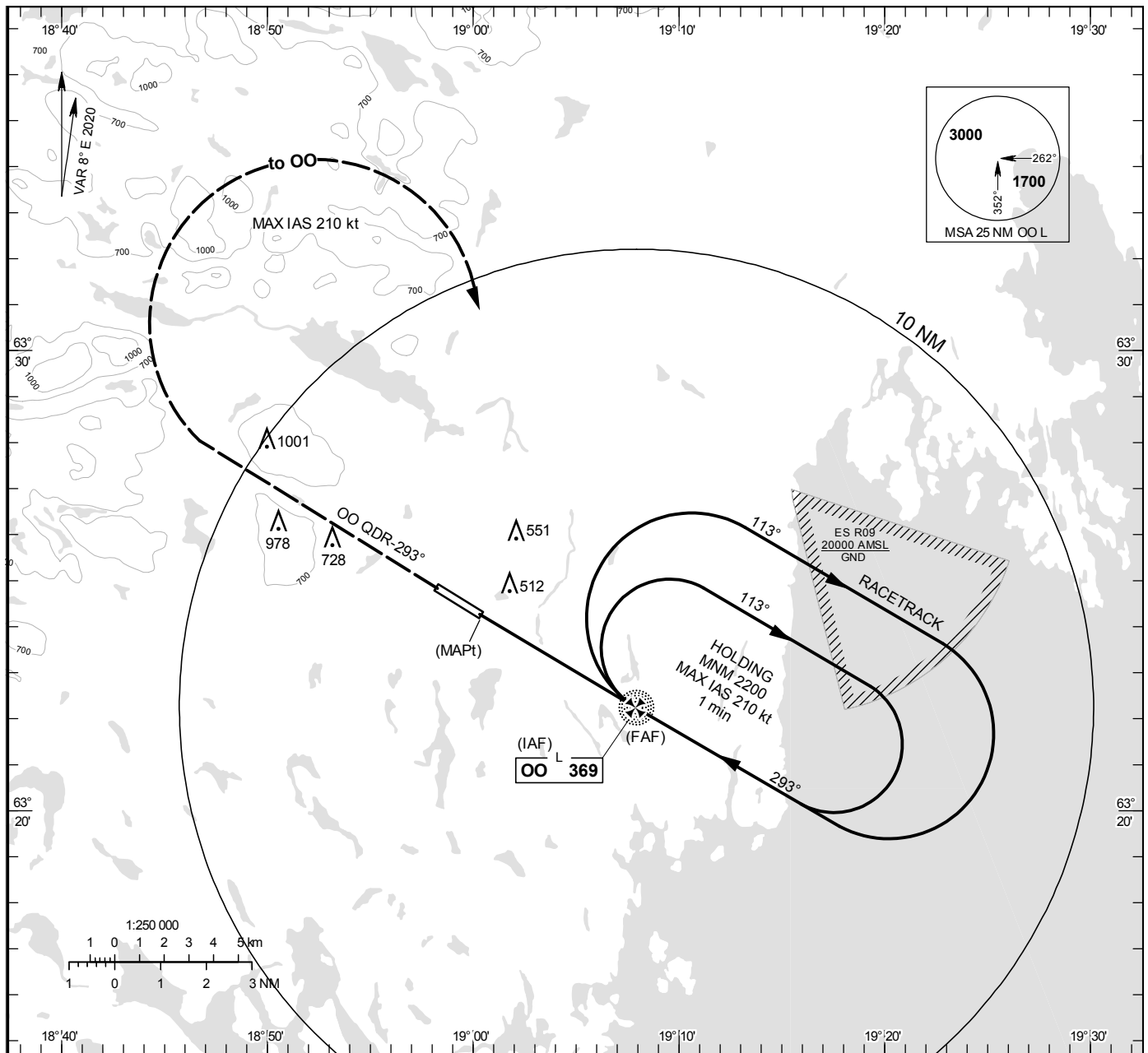


NDB RWY 30

ÖVIK TOWER 122.255

THR ELEV 332 ft, AD ELEV 355 ft
 OCH are related to THR.
 Circling OCH are related to AD ELEV.
 BRG are MAG
 ALT, HGT and ELEV in ft.

INSTRUMENT
 APPROACH
 CHART - ICAO

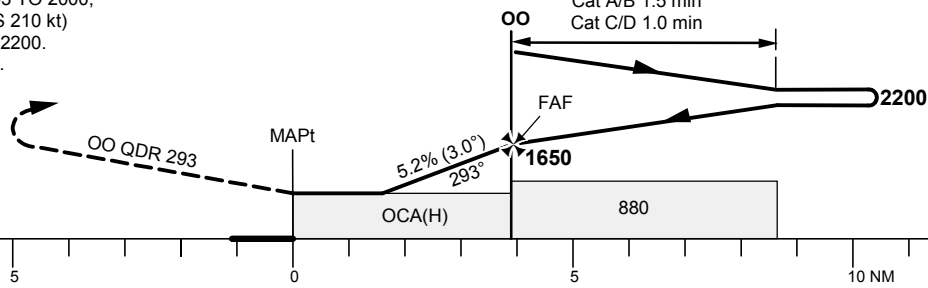


TA 5000 ft AMSL

Final approach line offset 1°

Missed approach turn limited to MAX IAS 210 kt

CLIMB ON OO QDR-293 TO 2000,
 TURN RIGHT (MAX IAS 210 kt)
 TO OO, CLIMBING TO 2200.
 JOIN HOLDING AT OO.



OCA (H)					Final approach	Distance FAF-MAPt 4.0 NM						
Cat of ACFT	A	B	C	D	DME OSK NM	4	3	2				
Straight-in Approach	760(430)				ALT	1540	1230	910				
Circling	850(500)	1030(680)	1380(1030)	1400(1050)	GS	kt	80	100	120	140	160	180
					Time	min:s	3:00	2:24	2:00	1:43	1:30	1:20
					Rate of descent	ft/min	420	525	630	735	845	950