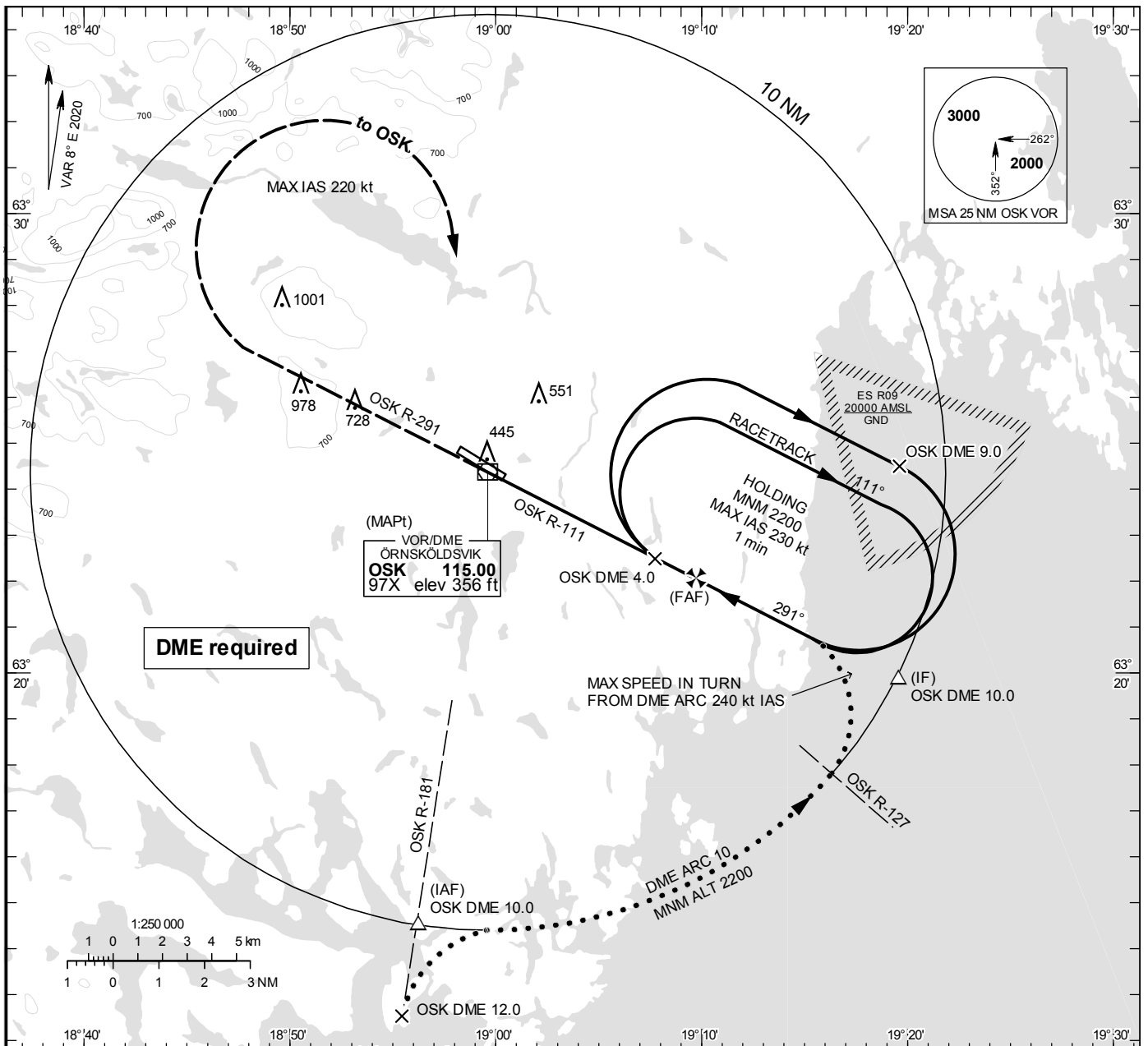


**INSTRUMENT
APPROACH
CHART – ICAO**

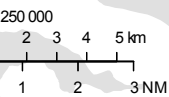
THR ELEV 332 ft, AD ELEV 355 ft
 OCH are related to THR.
 Circling OCH are related to AD ELEV.
 BRG are MAG
 ALT. HGT and ELEV in ft.

ÖVIK TOWER 122.255

VOR RWY 30

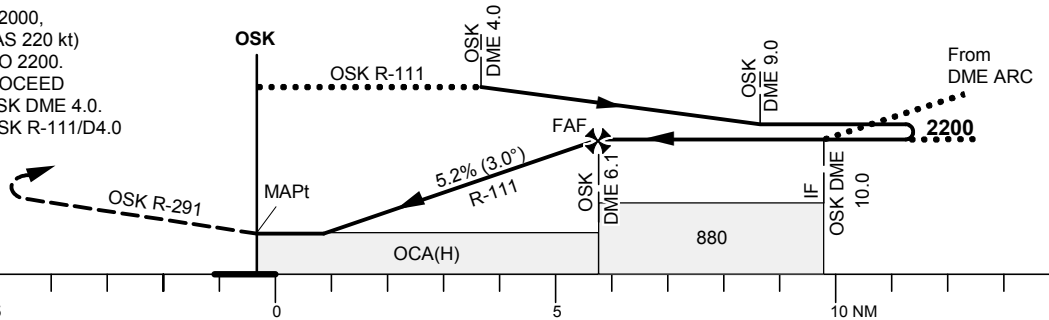


DME required



TA 5000 Final APCH line offset 3° Missed approach turn limited to MAX IAS 220 kt *Timing not authorized for defining the MAPt

CLIMB ON R-291 TO 2000,
 TURN RIGHT (MAX IAS 220 kt)
 TO OSK CLIMBING TO 2200.
 INTERCEPT AND PROCEED
 ON OSK R-111 TO OSK DME 4.0.
 JOIN HOLDING AT OSK R-111/D4.0



Cat of ACFT	OCA (H)				Final approach					Distance FAF-MAPt 6.1 NM*						
	A	B	C	D	DME OSK NM	6	5	4	3	2	6	5	4	3	2	
Straight-in Approach	700(370)				2180	1860	1540	1230	910							
Circling	850(500)	1030(680)	1380(1030)	1400(1050)	GS	80	100	120	140	160	180					
					Time	min:s	4:33	3:38	3:02	2:36	2:17	2:01				
					Rate of descent	ft/min	420	525	630	735	845	950				