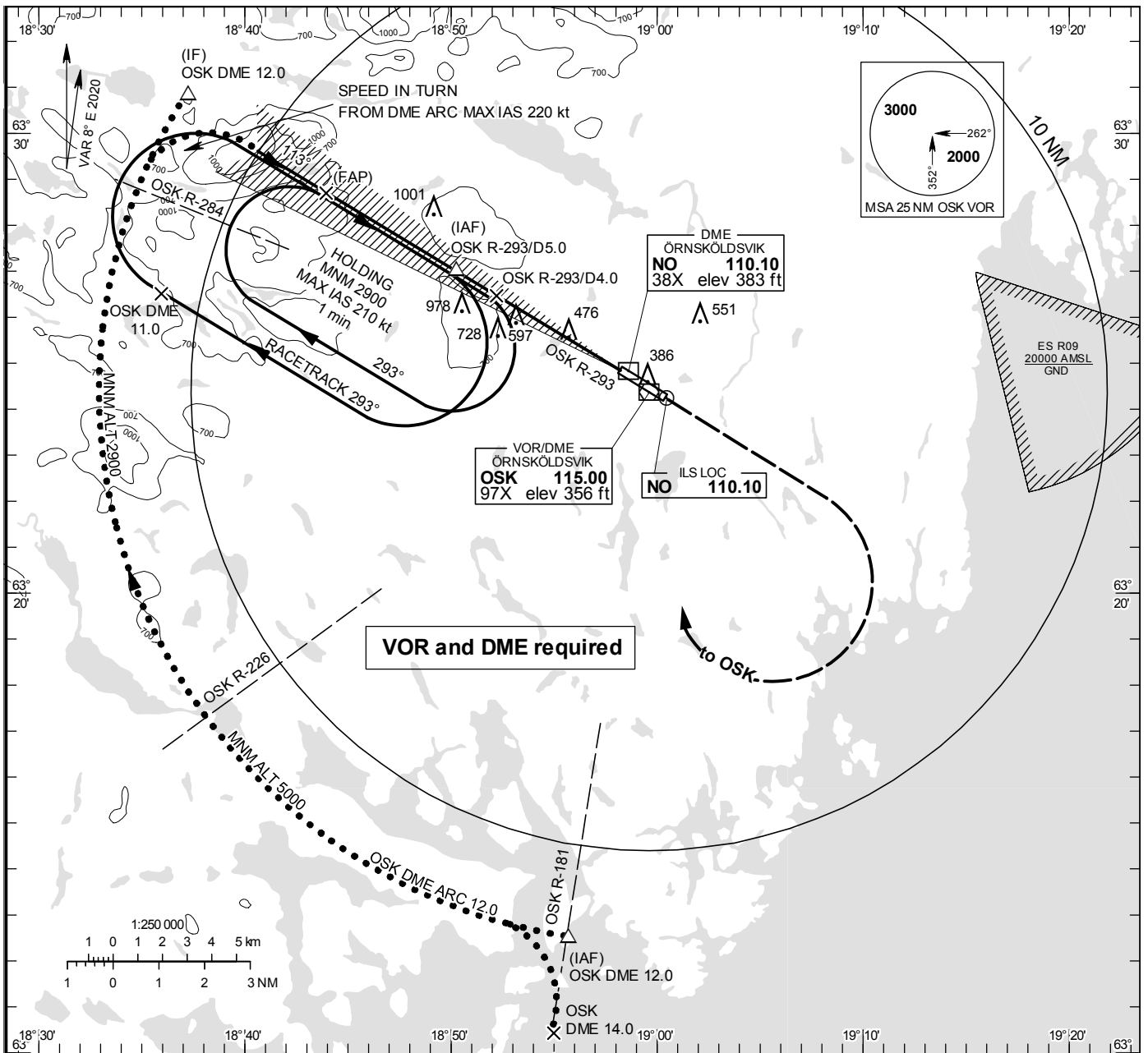


**INSTRUMENT APPROACH CHART – ICAO**

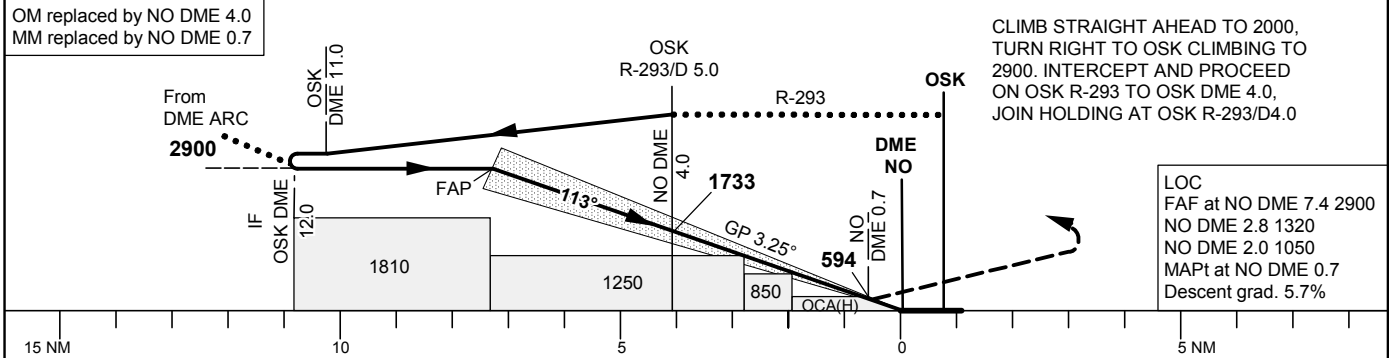
**THR ELEV 354.1 ft, AD ELEV 355 ft**  
 OCH are related to THR.  
 Circling OCH are related to AD ELEV.  
 BRG are MAG  
 ALT. HGT and ELEV in ft.

ÖVIK TOWER 122.255

ILS z or LOC z RWY 12



TA 5000 ft AMSL RDH 50.2 ft Max speed in racetrack 240 kt IAS \*Timing not authorized for defining the MAPt



OCA (H)					Final approach	LOC Distance FAF-MAPT 6.7 NM*							
Cat of ACFT	A	B	C	D	DME NO NM	7	6	5	4	3	2		
Straight-in Approach	CAT I	498(144)	508(154)	518(164)	528(174)	ALT	2770	2420	2080	1730	1390	1040	
	LOC	730(380)				GS	kt	80	100	120	140	160	180
Circling		850(500)	1030(680)	1380(1030)	1400(1050)	Rate of descent	ft/min	460	575	690	805	920	1035