

**ARP** 630255N 0174608E

**AD ELEV** 36 FEET

**LEGEND** See GEN 2.3

Dimensions in m, ELEV in ft

TWY NR	WIDTH	Surface Bearing strength	Day marking		Taxiway lighting	
			Centerline Holding	Edge Centerline	RGL Stopbar	
A	23 m	ASPH PCN 30 F/B/X/T	CL HLDG	EDGE	RGL	RGL

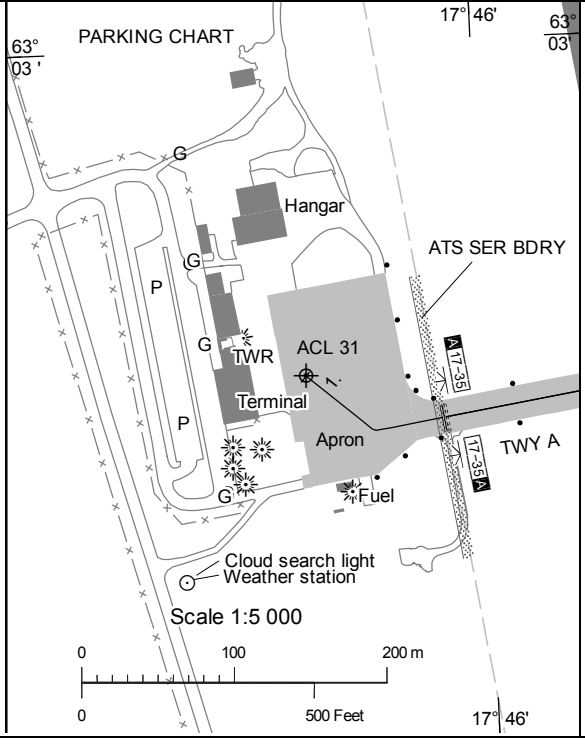
**REMARK:** ACN 45 accepted occasionally

INS Coordinates for Aircraft Stands			
APRON Surface Bearing strength	NR	COORD	ELEV
ASPH PCN 30 F/B/X/T	1	630252.96N 174551.67E	31

**REMARK:** ACN 45 accepted occasionally

RWY NR	TRUE & MAG BRG	THR PSN Geoid undulation	Bearing strength	THR ELEV and highest ELEV of TDZ of precision APCH RWY	Declared distances				Approach and runway lighting				
					TORA	TODA	ASDA	LDA	APCH	THR TRID TDZ	VASIS (MEHT)	Edge	End
17	171.53° GEO 165° MAG	630326.91N 0174557.39E GUND 85 ft	PCN 30 F/B/X/T	THR 35 ft	2001	2001	2001	2001		THR Green TRID LIH	PAPI Left/3.25° (49.2 ft)	2001/60 m White Caution zone 600 m yellow LIL/LIH	Red
35	351.53° GEO 345° MAG	630222.99N 0174618.36E GUND 85.1 ft	PCN 30 F/B/X/T	THR 23.5 ft TDZ 27.0 ft	2001	2001	2001	2001	Calvert Cat I 900 m LIL/LIH	THR Green	PAPI Left/3.25° (57.4 ft)	2001/60 m White Caution zone 600 m yellow LIL/LIH	Red

**REMARK:** ACN 45 accepted occasionally.  
REDL located 4.5 m from RWY edge.  
Electronic flashing approach system lights 660-410 m before THR 35.



LFV

CHANGE: VAR, editorial.

AIRAC AMDT 4/2019 20 JUN 2019

AIP SWEDEN

AFIS 122.155

AERODROME CHART - ICAO

KRAMFORS-SOLLEFTEA

AD 2 ESNK 2-1