
LFV, SE-601 79 NORRKÖPING. Phone +46 11 19 20 00. Fax +46 11 19 25 75. AFTN ESKLYAYT

All times in UTC

**GÖTEBORG/Landvetter AD (ESGG) –
Instrumentinflygning RNP y RWY 03**

14 MAR 2019 ersätter bifogad karta AIP-sidan
AD 2 ESGG 5-9 daterad 6 DEC 2018.

NOTAM A0230/19 upphör den 13 MAR 2359.

Inarbetas i AIP AMDT 3/2019 WEF 25 APR 2019.

**GÖTEBORG/Landvetter AD (ESGG) –
Instrument approach RNP y RWY 03**

14 MAR 2019 the attached chart replaces AIP page
AD 2 ESGG 5-9 dated 6 DEC 2018.

NOTAM A0230/19 expires on 13 MAR 2359.

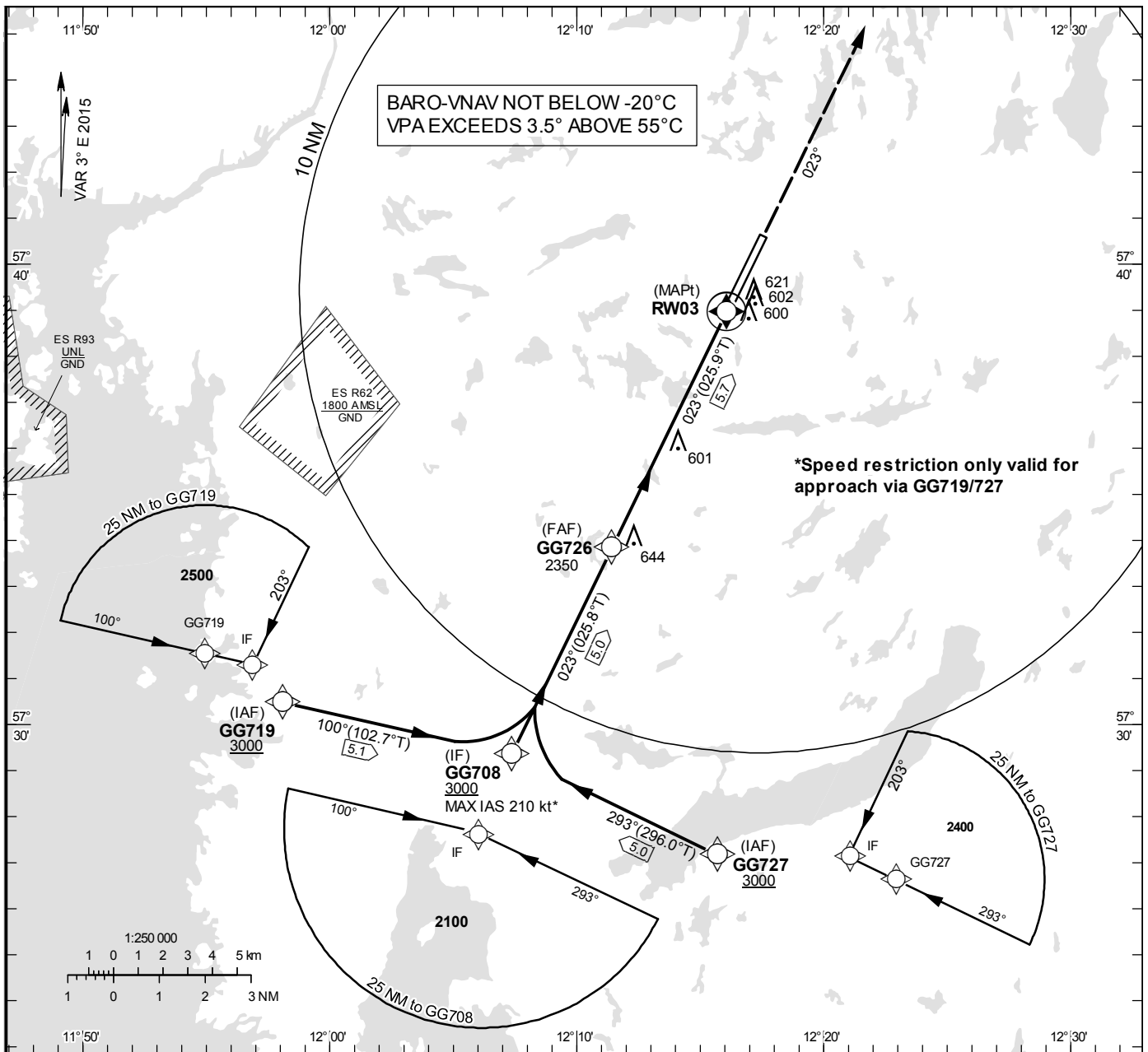
Will be incorporated in AIP AMDT 3/2019 WEF 25
APR 2019.

– SLUT / END –

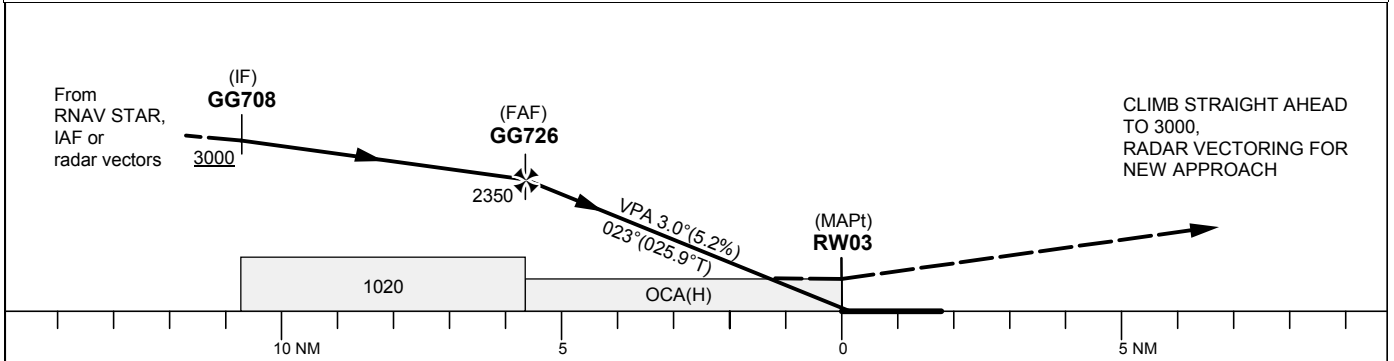
INSTRUMENT APPROACH CHART – ICAO
THR ELEV 478.3 ft, AD ELEV 507 ft
 OCH are related to THR.
 BRG are MAG (True).
 ALT, HGT and ELEV in ft.

LANDVETTER TOWER	118.605
LANDVETTER ATIS	118.380
GÖTEBORG CONTROL	124.680

RNP y RWY 03



TA 5000 ft AMSL RDH 50



Cat of ACFT	OCA (H)				Final approach Dist to RW03 (NM)	Distance FAF-MAPt 5.7 NM						
	A	B	C	D		5	4	3	2			
LNAV/VNAV	740(260)	750(270)	760(280)	790(310)	2130	1810	1490	1170				
LNAV	850(370)				GS	kt	80	100	120	140	160	180
					Rate of descent	ft/min	425	530	635	745	850	955

RNP y RWY 03 via GG719

Path Desc	Waypoint Identifier	Fly-over	Course °M(°T)	Dist (NM)	Turn Dir	Altitude	Speed	VPA/RDH	Rec Navaid	Navigation Specification
IF	GG719	-	-	-	-	+3000	-	-	-	RNP APCH
TF	GG708	-	100°(102.7°)	5.1	-	+3000	-210	-	-	RNP APCH

RNP y RWY 03 via GG727

Path Desc	Waypoint Identifier	Fly-over	Course °M(°T)	Dist (NM)	Turn Dir	Altitude	Speed	VPA/RDH	Rec Navaid	Navigation Specification
IF	GG727	-	-	-	-	+3000	-	-	-	RNP APCH
TF	GG708	-	293°(296.0°)	5.0	-	+3000	-210	-	-	RNP APCH

Path Desc	Waypoint Identifier	Fly-over	Course °M(°T)	Dist (NM)	Turn Dir	Altitude	Speed	VPA/RDH	Rec Navaid	Navigation Specification
IF	GG708	-	-	-	-	+3000	-	-	-	RNP APCH
TF	GG726	-	023°(025.8°)	5.0	-	2350	-	-	-	RNP APCH
TF	RW03	Y	023°(025.9°)	5.7	-	@529	-	-3.0/50	-	RNP APCH
CA	-	-	023°(026.0°)	-	-	@3000	-	-	-	RNP APCH
VM	-	-	023°	-	-	-	-	-	-	RNP APCH