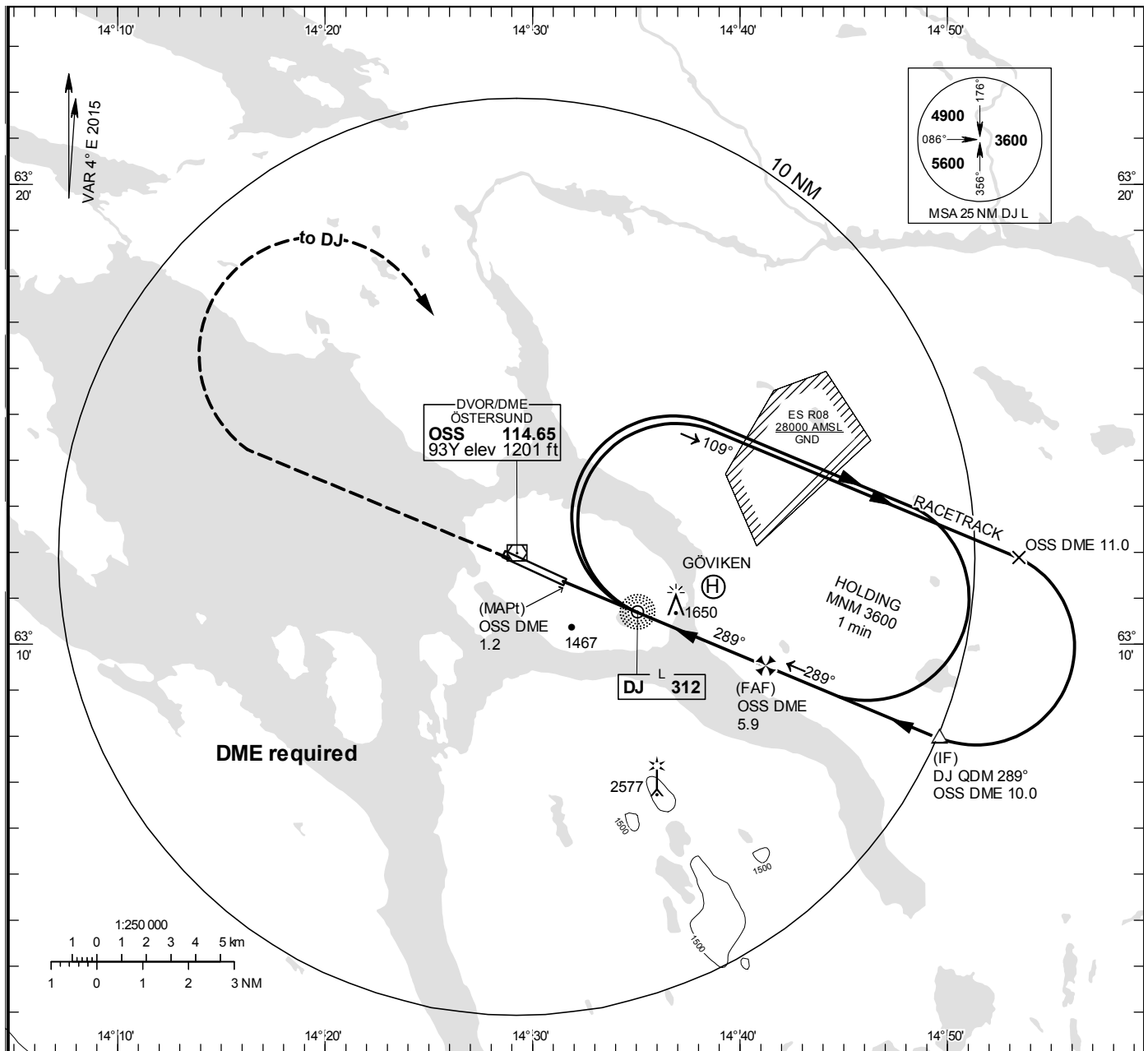


NDB RWY 30

ÖSTERSUND TOWER 135.655

THR ELEV 1233 ft, AD ELEV 1233 ft
 OCH are related to THR.
 Circling OCH are related to AD ELEV.
 BRG are MAG
 ALT. HGT and ELEV in ft.

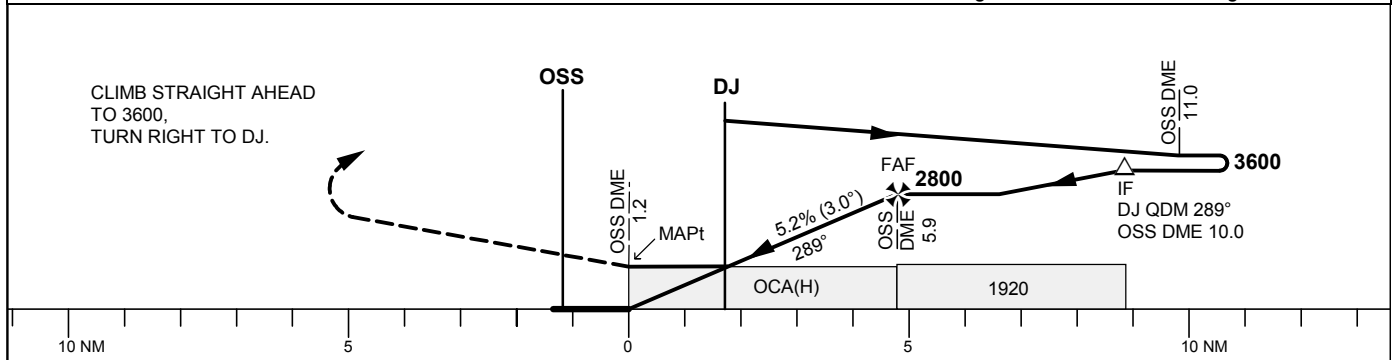
**INSTRUMENT
 APPROACH
 CHART – ICAO**



TA 6000 ft AMSL

Final APCH line offset 2°

*Timing not authorized for defining the MAPt



OCA (H)					Final approach	Distance FAF-MAPt 4.7 NM*						
Cat of ACFT	A	B	C	D	DME OSS NM	2500			2180			
					ALT	80	100	120	140	160	180	
Straight-in Approach	1900(670)				GS	kt	80	100	120	140	160	180
					Time	min:s	3:32	2:50	2:21	2:01	1:46	1:34
Circling	1900(670)	1950(720)	2050(820)	2980(1750)	Rate of descent	ft/min	425	530	635	745	850	955