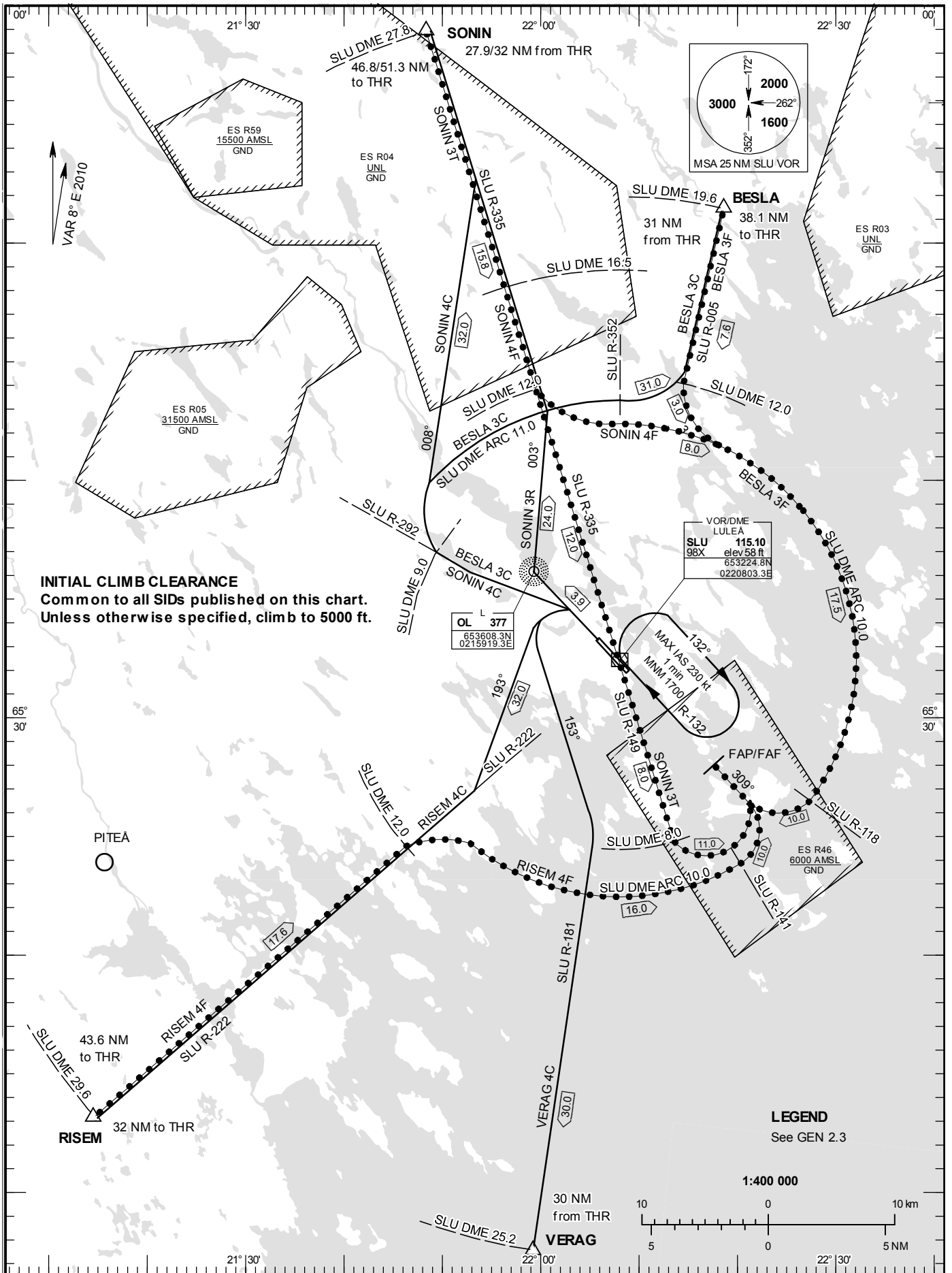


**STANDARD INSTRUMENT
DEPARTURE AND ARRIVAL
CHART (SID/STAR) - ICAO**

HGT and ALT in ft
BRG are MAG
TA 5000 ft AMSL

KALLAX TOWER	128.200
KALLAX CONTROL	125.450

RWY 32



INITIAL CLIMB CLEARANCE
Common to all SIDs published on this chart.
Unless otherwise specified, climb to 5000 ft.

LEGEND
See GEN 2.3

1:400 000



DEPARTURE (SID) RWY 32

INITIAL CLIMB CLEARANCE

Common to all SIDs published on charts.
Unless otherwise specified, climb to 5000 ft.

BESLA THREE CHARLIE DEPARTURE (BESLA 3C)

Straight ahead to 1000 ft. Turn left, intercept SLU R-292 and proceed to SLU DME 9.0. Turn right and proceed on SLU DME ARC 11.0. At SLU R-352 turn left, intercept SLU R-005 and proceed to BESLA.

RISEM FOUR CHARLIE DEPARTURE (RISEM 4C)

Straight ahead to 1000 ft. Turn left to track 193°, intercept SLU R-222 and proceed to RISEM.

SONIN FOUR CHARLIE DEPARTURE (SONIN 4C)

Straight ahead to 1000 ft. Turn left, intercept SLU R-292 and proceed to SLU DME 9.0. Turn right to track 008° and intercept SLU R-335 and proceed to SONIN.

SONIN THREE ROMEO DEPARTURE (SONIN 3 R)

(For PROP ACFT only.)

Straight ahead to OL, turn right to track 003° to intercept SLU R-335 and proceed to SONIN.

VERAG FOUR CHARLIE DEPARTURE (VERAG 4 C)

Straight ahead to 1000 ft. Turn left to track 153°, intercept SLU R-181 and proceed to VERAG.

ARRIVAL (STAR) RWY 32

REMARK

Descent to a minimum altitude for an arrival route must not be initiated until an air traffic control clearance to this altitude or an approach clearance has been received.

BESLA THREE FOXTROT ARRIVAL (BESLA 3F)

At BESLA intercept SLU R-005 and proceed to SLU DME 12.0, not below 2000 ft. Turn left and proceed on SLU DME ARC 10.0. At SLU R-118 turn right to intercept LOC SPA, not below 1700 ft until FAP.

RISEM FOUR FOXTROT ARRIVAL (RISEM 4F)

At RISEM intercept SLU R-222 and proceed to SLU DME 12.0, not below 2500 ft. Turn right to intercept SLU DME ARC 10.0. At SLU R-141 turn left to intercept LOC SPA, not below 1700 ft until FAP.

SONIN FOUR FOXTROT ARRIVAL (SONIN 4 F)

At SONIN intercept SLU R-335 and proceed to SLU DME 16.5, not below 2500 ft. Proceed on SLU R-335 to SLU DME 12.0, not below 2000 ft. Turn left and proceed on SLU DME ARC 10.0. At SLU R-118, turn right to intercept LOC SPA, not below 1700 ft until FAP.

SONIN THREE TANGO ARRIVAL (SONIN 3 T)

(For PROP ACFT only.)

At SONIN intercept SLU R-335 and proceed to SLU, not below 2500 ft. At SLU turn left to intercept SLU R-149 and proceed to SLU DME 8.0. Turn left to intercept LOC SPA, not below 1700 ft until FAP.