

All times in UTC

**GÖTEBORG/Landvetter AD (ESGG) –
Uppdaterade karta**

I AIP AIRAC AMDT 6/18 som träder i kraft den 8 NOV 2018 har routepunkterna GG717 och GG718 felaktigt bytt plats på kartbilden för RNAV (DME/DME or GNSS) STAR RWY 03.

Ref. AD 2 ESGG 4-23.

Uppdaterad kartbild bifogas.

**GÖTEBORG/Landvetter AD (ESGG) –
Updated chart**

In AIP AIRAC AMDT 6/18 effective on 8 NOV 2018 the waypoints GG717 and GG718 have, incorrectly, changed place on the chart RNAV (DME/DME or GNSS) STAR RWY 03.

Ref AD 2 ESGG 4-23.

Updated chart image attached.

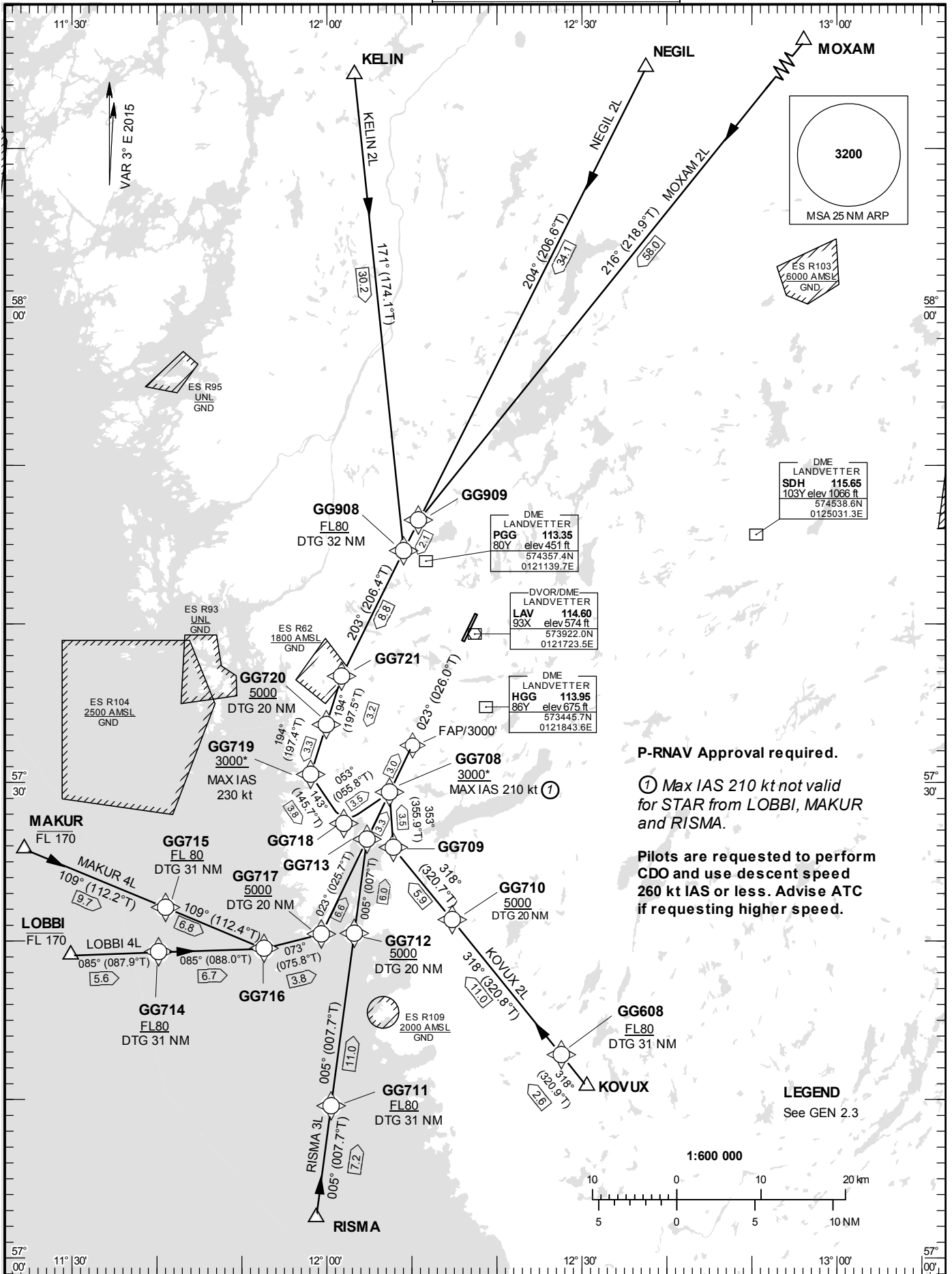
– SLUT / END –

STANDARD INSTRUMENT
ARRIVAL CHART (STAR) -
ICAO

HGT and ALT in ft
BRG are MAG (True)
TA 5000 ft AMSL

LANDVETTER TOWER	118.605
LANDVETTER ATIS	118.380
GÖTEBORG CONTROL	124.680

RNAV (DME/DME or GNSS)
STAR RWY 03



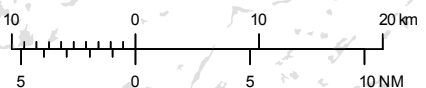
P-RNAV Approval required.

① Max IAS 210 kt not valid for STAR from LOBBI, MAKUR and RISMA.

Pilots are requested to perform CDO and use descent speed 260 kt IAS or less. Advise ATC if requesting higher speed.

LEGEND
See GEN 2.3

1:600 000



Prescribed Coding of RNAV STAR for RWY 03

REMARK

Following RNAV STARs are primarily used at night and during periods of low traffic density at ATC discretion.

Approval for P-RNAV (RNAV1) required.

Pilots are requested to perform CDO and use descent speed 260 kt IAS or less. Advise ATC if requesting higher speed.

Aircraft to GÖTEBORG/Landvetter shall not be operated at an airspeed of more than 250 kt IAS below FL100 unless otherwise instructed.

When established on ILS final approach track, maintain 160 kt IAS or more until passing OM, unless otherwise instructed. If unable, inform ATC immediately.

In case of radio communication failure, see AD 2.22 para 4.

*) Unnamed WPT, due to different coding/naming conventions at navdatabase suppliers.

RNAV STAR	Path Descriptor	Waypoint Identifier	Fly-over	Course °M(°T)	Turn Direction	Altitude	Speed	VPA/RDH	Rec Navaid	Navigation Specification
KELIN 2L	IF	KELIN								RNAV1
	TF	GG908				+FL80				RNAV1
	TF	GG721								RNAV1
	TF	GG720				+5000				RNAV1
	TF	GG719				+3000	230			RNAV1
	TF	GG718								RNAV1
	TF	GG708				+3000	210			RNAV1
	TF	FAP03*)				3000				RNAV1

STAR instruction: KELIN – GG908 (FL80 or above) – GG721 – GG720 (5000 ft or above) – GG719 (max IAS 230 kt, 3000 ft or above) – GG718 – GG708 (max IAS 210 kt, 3000 ft or above) – FAP03*)

RNAV STAR	Path Descriptor	Waypoint Identifier	Fly-over	Course °M(°T)	Turn Direction	Altitude	Speed	VPA/RDH	Rec Navaid	Navigation Specification
KOVUX 2L	IF	KOVUX								RNAV1
	TF	GG608				+FL80				RNAV1
	TF	GG710				+5000				RNAV1
	TF	GG709								RNAV1
	TF	GG708				+3000	210			RNAV1
	TF	FAP03*)				3000				RNAV1

STAR instruction: KOVUX – GG608 (FL80 or above) – GG710 (5000 ft or above) – GG709 – GG708 (max IAS 210 kt, 3000 ft or above) – FAP03*)

RNAV STAR	Path Descriptor	Waypoint Identifier	Fly-over	Course °M(°T)	Turn Direction	Altitude	Speed	VPA/RDH	Rec Navaid	Navigation Specification
LOBBI 4L	IF	LOBBI				-FL170				RNAV1
	TF	GG714				+FL80				RNAV1
	TF	GG716								RNAV1
	TF	GG717				+5000				RNAV1
	TF	GG713								RNAV1
	TF	GG708				+3000				RNAV1
	TF	FAP03*)				3000				RNAV1

STAR instruction: LOBBI (FL170 or below) – GG714 (FL80 or above) – GG716 – GG717 (5000 ft or above) – GG713 – GG708 (3000 ft or above) – FAP03*)

RNAV STAR	Path Descriptor	Waypoint Identifier	Fly-over	Course °M(°T)	Turn Direction	Altitude	Speed	VPA/RDH	Rec Navaid	Navigation Specification
MAKUR 4L	IF	MAKUR				-FL170				RNAV1
	TF	GG715				+FL80				RNAV1
	TF	GG716								RNAV1
	TF	GG717				+5000				RNAV1
	TF	GG713								RNAV1
	TF	GG708				+3000				RNAV1
	TF	FAP03*)				3000				RNAV1

STAR instruction: MAKUR (FL170 or below) – GG715 (FL80 or above) – GG716 – GG717 (5000 ft or above) – GG713 – GG708 (3000 ft or above) – FAP03*)

RNAV STAR	Path Descriptor	Waypoint Identifier	Fly-over	Course °M(°T)	Turn Direction	Altitude	Speed	VPA/RDH	Rec Navaid	Navigation Specification
MOXAM 2L	IF	MOXAM								RNAV1
	TF	GG909								RNAV1
	TF	GG908				+FL80				RNAV1
	TF	GG721								RNAV1
	TF	GG720				+5000				RNAV1
	TF	GG719				+3000	230			RNAV1
	TF	GG718								RNAV1
	TF	GG708				+3000	210			RNAV1
	TF	FAP03*)				3000				RNAV1

STAR instruction: MOXAM – GG909 – GG908 (FL80 or above) – GG721 – GG720 (5000 ft or above) – GG719 (max IAS 230 kt, 3000 ft or above) – GG718 – GG708 (max IAS 210 kt, 3000 ft or above) – FAP03*)

RNAV STAR	Path Descriptor	Waypoint Identifier	Fly-over	Course °M(°T)	Turn Direction	Altitude	Speed	VPA/RDH	Rec Navaid	Navigation Specification
NEGIL 2L	IF	NEGIL								RNAV1
	TF	GG908				+FL80				RNAV1
	TF	GG721								RNAV1
	TF	GG720				+5000				RNAV1
	TF	GG719				+3000	230			RNAV1
	TF	GG718								RNAV1
	TF	GG708				+3000	210			RNAV1
	TF	FAP03*)				3000				RNAV1

STAR instruction: NEGIL – GG908 (FL80 or above) – GG721 – GG720 (5000 ft or above) – GG719 (max IAS 230 kt, 3000 ft or above) – GG718 – GG708 (max IAS 210 kt, 3000 ft or above) – FAP03*)

RNAV STAR	Path Descriptor	Waypoint Identifier	Fly-over	Course °M(°T)	Turn Direction	Altitude	Speed	VPA/RDH	Rec Navaid	Navigation Specification
RISMA 3L	IF	RISMA								RNAV1
	TF	GG711				+FL80				RNAV1
	TF	GG712				+5000				RNAV1
	TF	GG713								RNAV1
	TF	GG708				+3000				RNAV1
	TF	FAP03*)				3000				RNAV1

STAR instruction: RISMA – GG711 (FL80 or above) – GG712 (5000 ft or above) – GG713 – GG708 (3000 ft or above) – FAP03*)