

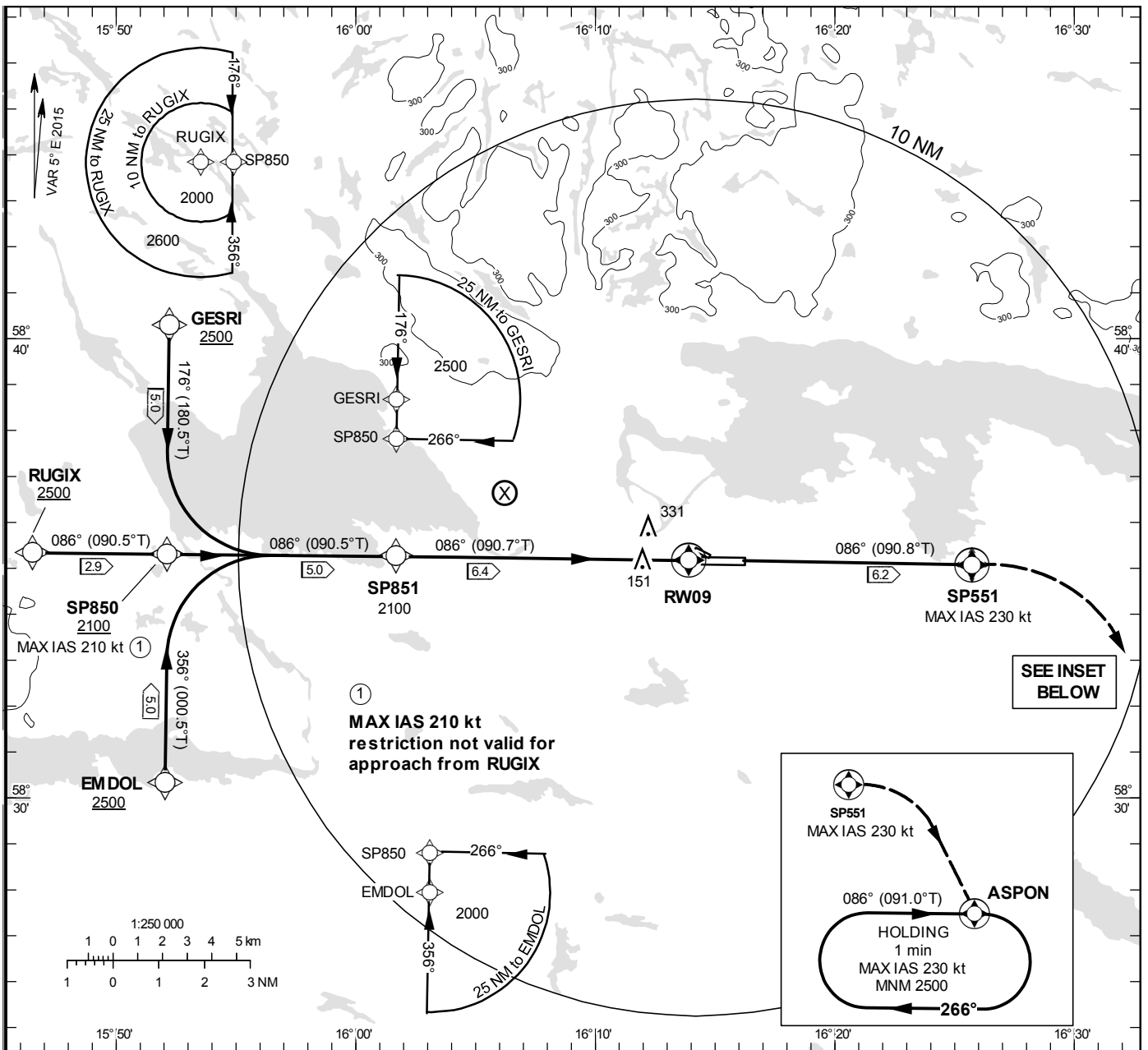
INSTRUMENT APPROACH CHART – ICAO

THR ELEV 13.3 ft, AD ELEV 32 ft
OCH are related to THR.
BRG are MAG (True).
ALT, HGT and ELEV in ft.
BARO-VNAV NOT BELOW -25° C

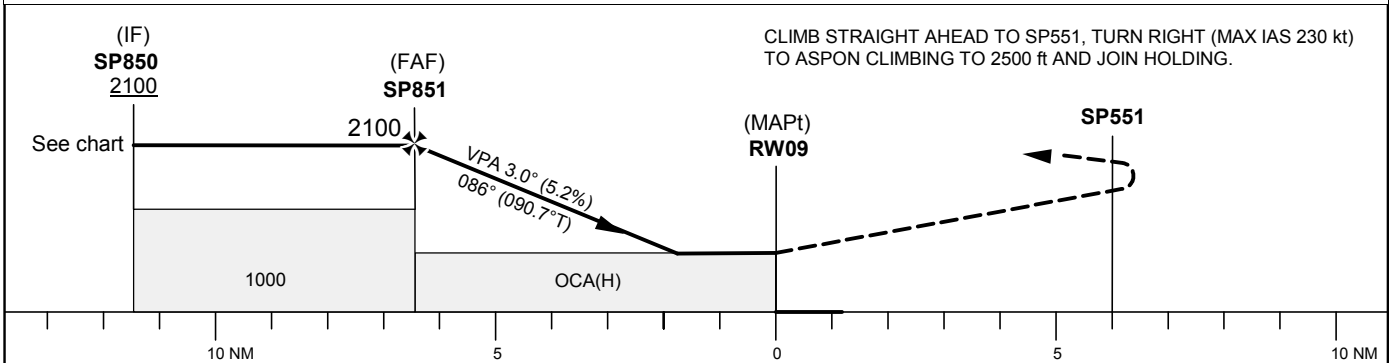
KUNGSÄNGEN TOWER	120.355
ÖSTGÖTA CONTROL	132.955

RNP RWY 09

EGNOS Ch 67667 E 09A



TA 5000 ft AMSL RDH 50 ft



CLIMB STRAIGHT AHEAD TO SP551, TURN RIGHT (MAX IAS 230 kt) TO ASPON CLIMBING TO 2500 ft AND JOIN HOLDING.

Cat of ACFT	OCA (H)				Final approach Dist to RWY 30	Distance FAF-MAPT 6.4 NM				
	A	B	C	D		5	4	3	2	1
LPV	281 (268)	293 (280)	301 (288)	312 (299)	1660	1340	1020	700	380	
LNAV/VNAV	470 (457)	480 (467)	490 (477)	500 (487)	GS	80	100	120	140	160
LNAV	580 (567)				Rate of descent	ft/min	425	530	635	745
							850	955		

RNP RWY 09 via RUGIX

Path Desc	Waypoint Identifier	Fly-over	Course °M(°T)	Dist (NM)	Turn Dir	Altitude	Speed	VPA/RDH	Rec Navaid	Navigation Specification
IF	RUGIX	-	-	-	-	+2500	-	-	-	RNP APCH
TF	SP850	-	086°(090.5°)	2.9	-	+2100	-	-	-	RNP APCH
TF	SP851	-	086°(090.5°)	5.0	-	@2100	-	-	-	RNP APCH
TF	RW09	Y	086°(090.7°)	6.4	-	@63	-	-3.0/50	-	RNP APCH
CF	SP551	Y	086°(090.8°)	6.2	-	-	-230	-	ON	RNP APCH
DF	ASPON	Y	-	-	R	+2500	-	-	-	RNP APCH
HM	ASPON	Y	086°(091.0°)	-	R	+2500	-230	-	-	RNAV 1

RNP RWY 09 via GESRI

Path Desc	Waypoint Identifier	Fly-over	Course °M(°T)	Dist (NM)	Turn Dir	Altitude	Speed	VPA/RDH	Rec Navaid	Navigation Specification
IF	GESRI	-	-	-	-	+2500	-	-	-	RNP APCH
TF	SP850	-	176°(180.5°)	5.0	-	+2100	-210	-	-	RNP APCH
TF	SP851	-	086°(090.5°)	5.0	L	@2100	-	-	-	RNP APCH
TF	RW09	Y	086°(090.7°)	6.4	-	@63	-	-3.0/50	-	RNP APCH
CF	SP551	Y	086°(090.8°)	6.2	-	-	-230	-	ON	RNP APCH
DF	ASPON	Y	-	-	R	+2500	-	-	-	RNP APCH
HM	ASPON	Y	086°(091.0°)	-	R	+2500	-230	-	-	RNAV 1

RNP RWY 09 via EMDOL

Path Desc	Waypoint Identifier	Fly-over	Course °M(°T)	Dist (NM)	Turn Dir	Altitude	Speed	VPA/RDH	Rec Navaid	Navigation Specification
IF	EMDOL	-	-	-	-	+2500	-	-	-	RNP APCH
TF	SP850	-	356°(000.5°)	5.0	-	+2100	-210	-	-	RNP APCH
TF	SP851	-	086°(090.5°)	5.0	R	@2100	-	-	-	RNP APCH
TF	RW09	Y	086°(090.7°)	6.4	-	@63	-	-3.0/50	-	RNP APCH
CF	SP551	Y	086°(090.8°)	6.2	-	-	-230	-	ON	RNP APCH
DF	ASPON	Y	-	-	R	+2500	-	-	-	RNP APCH
HM	ASPON	Y	086°(091.0°)	-	R	+2500	-230	-	-	RNAV 1

FAS Data Block

RNP RWY 09

Input data

Operation Type	0
SBAS Provider	1
Airport Identifier	ESSP
Runway	9
Runway Direction	0
Approach Performance Designator	0
Route Indicator	
Reference Path Data Selector	0
Reference Path Identifier	E09A
LTP/FTP Latitude	583510.0100N
LTP/FTP Longitude	0161354.0900E
LTP/FTP Ellipsoidal Height (metres)	31.9
FPAP Latitude	583508.9300N
Delta FPAP Latitude (seconds)	-1.0800
FPAP Longitude	0161610.4100E
Delta FPAP Longitude (seconds)	136.3200
Threshold Crossing Height	50.0
TCH Units Selector	0
Glidepath Angle (degrees)	3.00
Course Width (metres)	105.00
Length Offset (metres)	0
HAL (metres)	40.0
VAL (metres)	50.0

Output data

Data Block	10 10 13 13 05 09 00 00 01 39 30 05 74 76 24 19 54 44 F7 06 3F 15 90 F7 FF 00 29 04 F4 01 2C 01 64 00 C8 FA 4D 06 14 0D
Calculated CRC Value	4D06140D

Required Additional Data

ICAO Code	ES
LTP/FTP Orthometric Height (metres)	3.9
FPAP Orthometric Height (metres)	9.7