

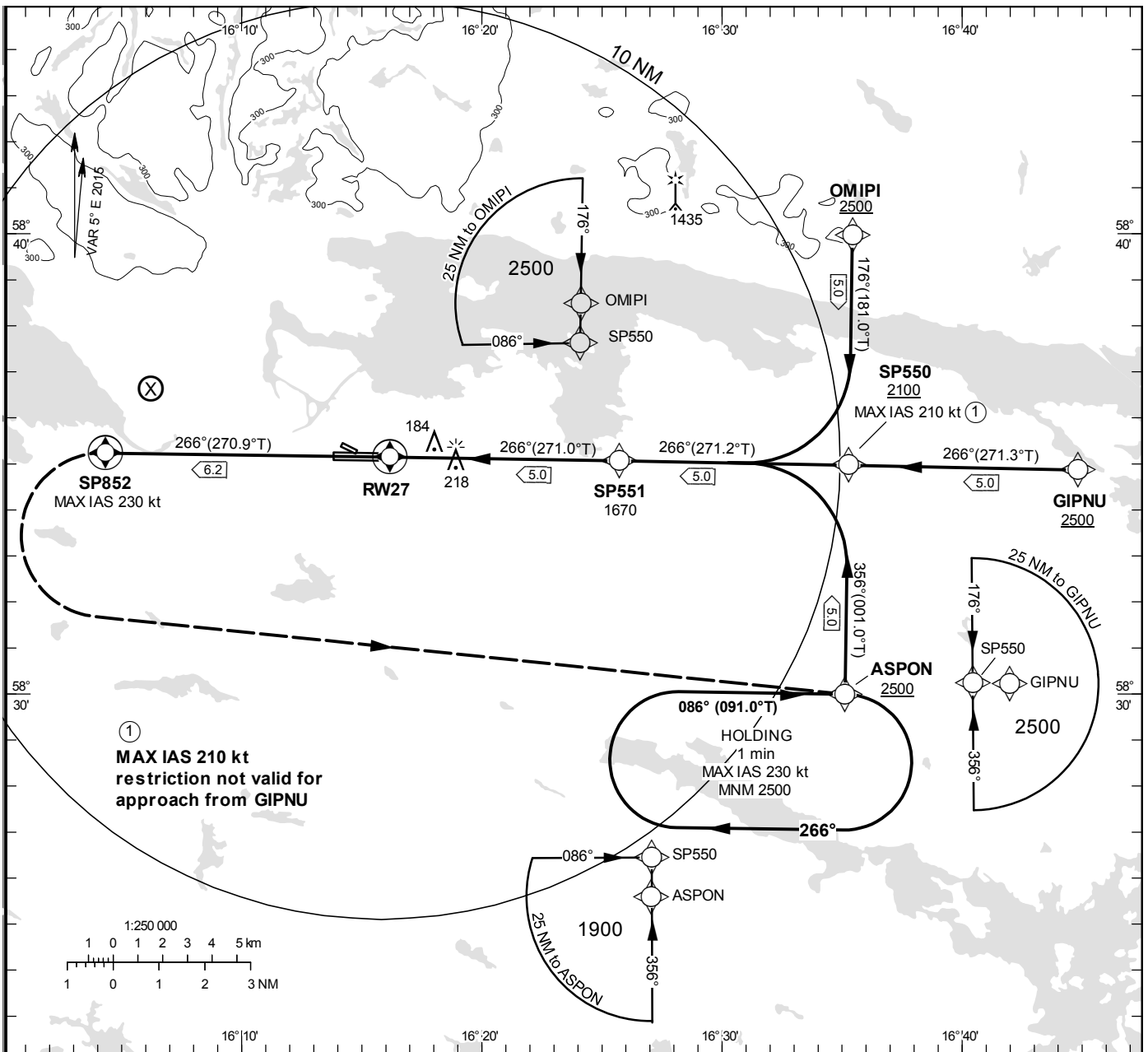
INSTRUMENT APPROACH CHART – ICAO

THR ELEV 32.3 ft, AD ELEV 32 ft
 OCH are related to THR.
 BRG are MAG (True).
 ALT, HGT and ELEV in ft.
BARO-VNAV NOT BELOW -25° C

KUNGSÄNGEN TOWER	120.355
ÖSTGÖTA CONTROL	132.955

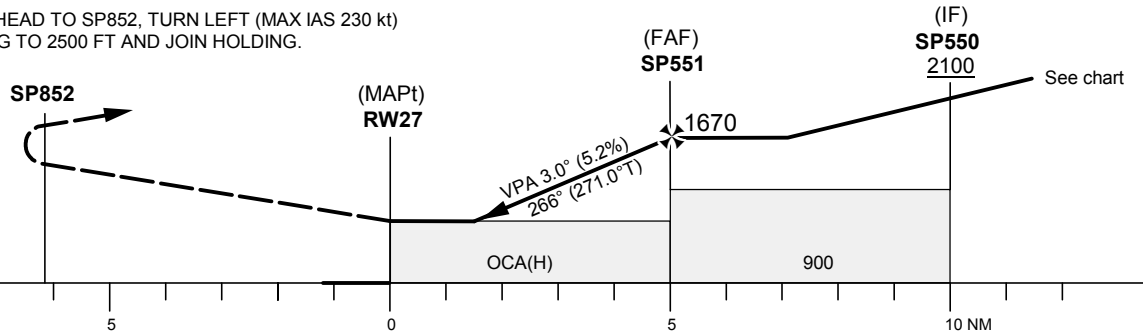
RNP RWY 27

EGNOS Ch 68827 E 27A



TA 5000 ft AMSL RDH 50 ft

CLIMB STRAIGHT AHEAD TO SP852, TURN LEFT (MAX IAS 230 kt) TO ASPON CLIMBING TO 2500 FT AND JOIN HOLDING.



Cat of ACFT	OCA (H)				Final approach Dist to RWY 27	Distance FAF-MAPT 5.0 NM				
	A	B	C	D		5	4	3	2	1
LPV	314 (282)	327 (295)	335 (303)	345 (313)	1670	1360	1040	720	400	
LNAV/VNAV	350 (318)	360 (328)	370 (338)	380 (348)	GS	80	100	120	140	160
LNAV	470 (438)				Rate of descent	ft/min	425	530	635	745
									850	955

RNP RWY 27 via GIPNU

Path Desc	Waypoint Identifier	Fly-over	Course °M(°T)	Dist (NM)	Turn Dir	Altitude	Speed	VPA/RDH	Rec Navaid	Navigation Specification
IF	GIPNU	-	-	-	-	+2500	-	-	-	RNP APCH
TF	SP550	-	266°(271.3°)	5.0	-	+2100	-	-	-	RNP APCH
TF	SP551	-	266°(271.2°)	5.0	-	@1670	-	-	-	RNP APCH
TF	RW27	Y	266°(271.0°)	5.0	-	@82	-	-3.0/50	-	RNP APCH
CF	SP852	Y	266°(270.9°)	6.2	-	-	-230	-	ON	RNP APCH
DF	ASPON	Y	-	-	L	+2500	-	-	-	RNP APCH
HM	ASPON	Y	086°(091.0°)	-	R	+2500	-230	-	-	RNAV 1

RNP RWY 27 via OMIPI

Path Desc	Waypoint Identifier	Fly-over	Course °M(°T)	Dist (NM)	Turn Dir	Altitude	Speed	VPA/RDH	Rec Navaid	Navigation Specification
IF	OMIPI	-	-	-	-	+2500	-	-	-	RNP APCH
TF	SP550	-	176°(181.0°)	5.0	-	+2100	-210	-	-	RNP APCH
TF	SP551	-	266°(271.2°)	5.0	R	@1670	-	-	-	RNP APCH
TF	RW27	Y	266°(271.0°)	5.0	-	@82	-	-3.0/50	-	RNP APCH
CF	SP852	Y	266°(270.9°)	6.2	-	-	-230	-	ON	RNP APCH
DF	ASPON	Y	-	-	L	+2500	-	-	-	RNP APCH
HM	ASPON	Y	086°(091.0°)	-	R	+2500	-230	-	-	RNAV 1

RNP RWY 27 via ASPON

Path Desc	Waypoint Identifier	Fly-over	Course °M(°T)	Dist (NM)	Turn Dir	Altitude	Speed	VPA/RDH	Rec Navaid	Navigation Specification
IF	ASPON	-	-	-	-	+2500	-	-	-	RNP APCH
TF	SP550	-	356°(000.1°)	5.0	-	+2100	-210	-	-	RNP APCH
TF	SP551	-	266°(271.2°)	5.0	L	@1670	-	-	-	RNP APCH
TF	RW27	Y	266°(271.0°)	5.0	-	@82	-	-3.0/50	-	RNP APCH
CF	SP852	Y	266°(270.9°)	6.2	-	-	-230	-	ON	RNP APCH
DF	ASPON	Y	-	-	L	+2500	-	-	-	RNP APCH
HM	ASPON	Y	086°(091.0°)	-	R	+2500	-230	-	-	RNAV 1

FAS Data Block

RNP RWY 27

Input data

Operation Type	0
SBAS Provider	1
Airport Identifier	ESSP
Runway	27
Runway Direction	0
Approach Performance Designator	0
Route Indicator	
Reference Path Data Selector	0
Reference Path Identifier	E27A
LTP/FTP Latitude	583508.9300N
LTP/FTP Longitude	0161610.4100E
LTP/FTP Ellipsoidal Height (metres)	37.7
FPAP Latitude	583510.0100N
Delta FPAP Latitude (seconds)	1.0800
FPAP Longitude	0161354.0900E
Delta FPAP Longitude (seconds)	-136.3200
Threshold Crossing Height	50.0
TCH Units Selector	0
Glidepath Angle (degrees)	3.00
Course Width (metres)	105.00
Length Offset (metres)	0
HAL (metres)	40.0
VAL (metres)	50.0

Output data

Data Block	10 10 13 13 05 1B 00 00 01 37 32 05 04 6E 24 19 54 6D FB 06 79 15 70 08 00 00 D7 FB F4 01 2C 01 64 00 C8 FA 2C 63 F9 B9
Calculated CRC Value	2C63F9B9

Required Additional Data

ICAO Code	ES
LTP/FTP Orthometric Height (metres)	9.7
FPAP Orthometric Height (metres)	3.9