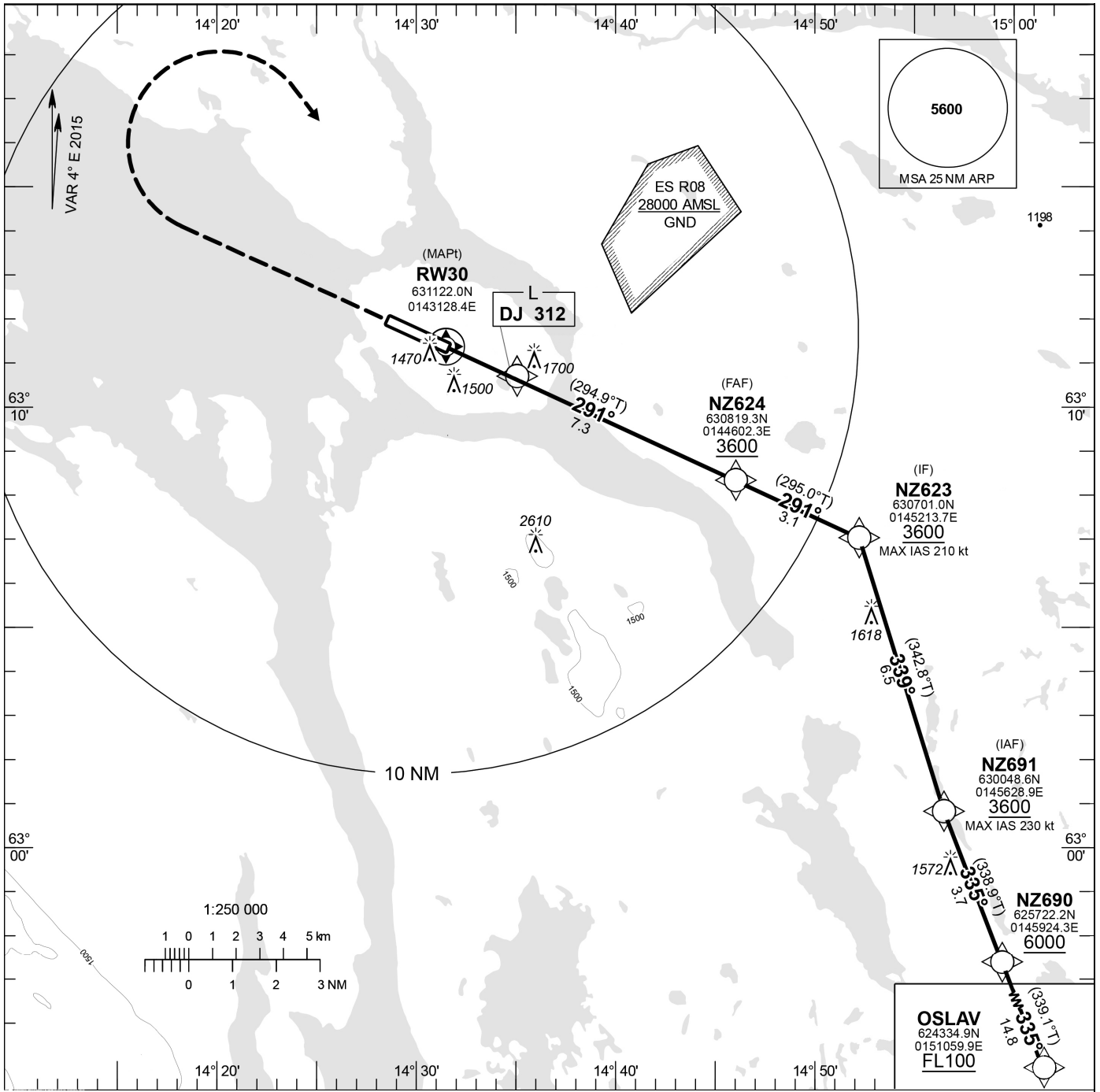


**INSTRUMENT
APPROACH
CHART – ICAO**

THR ELEV 1233 ft, AD ELEV 1233 ft
 OCH are related to THR.
 Circling HGT are related to AD ELEV.
 BRG are MAG. ALT, HGT and ELEV in ft.
BARO-VNAV not below -20° C

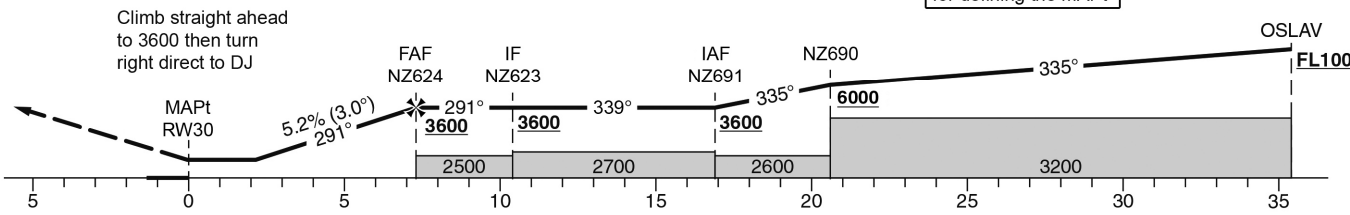
ÖSTERSUND TOWER 135.655

RNP RWY 30



No turn before MAPt

Timing not authorized for defining the MAPt



| Cat of ACFT | OCA (H) | | | | Final approach FAF-MAPt distance 7.3 NM | | | | | | | |
|-------------|------------|------------|------------|-------------|---|---------|------|------|------|------|------|------|
| | A | B | C | D | Dist to RWY 30 (NM) | 6 | 5 | 4 | 3 | 2 | 1 | |
| LNAV/VNAV | | 1650 (420) | | | Altitude (ft) | 3194 | 2875 | 2557 | 2239 | 1920 | - | |
| LNAV | | 1950 (720) | | | GS | kt | 90 | 110 | 130 | 150 | 170 | 190 |
| CIRCLING | 1950 (720) | 2000 (770) | 2100 (870) | 3010 (1780) | FAF-RWY 30 (7.3 NM) | MIN:SEC | 4:52 | 3:59 | 3:22 | 2:55 | 2:35 | 2:18 |
| | | | | | Rate of descent (5.2%) | ft/MIN | 480 | 580 | 690 | 790 | 900 | 1010 |

RNP RWY 30

Instrument Approach Procedure Coding Tables

| Path Descriptor | Waypoint Identifier | Fly-over | Course °M (°T) | Turn Direction | Altitude | Speed | VPA/RDH | Rec Navaid | Navigation Specification |
|-----------------|---------------------|----------|----------------|----------------|----------|-------|---------|------------|--------------------------|
| IF | OSLAV | - | - | - | +FL100 | - | - | - | RNAV1 |
| TF | NZ690 | - | 335° (339.1°) | - | +6000 | - | - | - | RNAV1 |
| TF | NZ691 | - | 335° (338.9°) | - | +3600 | -230 | - | - | RNAV1 |
| TF | NZ623 | - | 339° (342.8°) | - | +3600 | -210 | - | - | RNP APCH |
| TF | NZ624 | - | 291° (295.0°) | - | +3600 | -210 | - | - | RNP APCH |
| TF | RW30 | Y | 291° (294.9°) | - | - | - | -3.0/50 | - | RNP APCH |
| CA | - | - | 291° (294.7°) | - | +3600 | - | - | - | RNP APCH |
| DF | DJ | - | - | R | +3600 | - | - | - | RNP APCH |