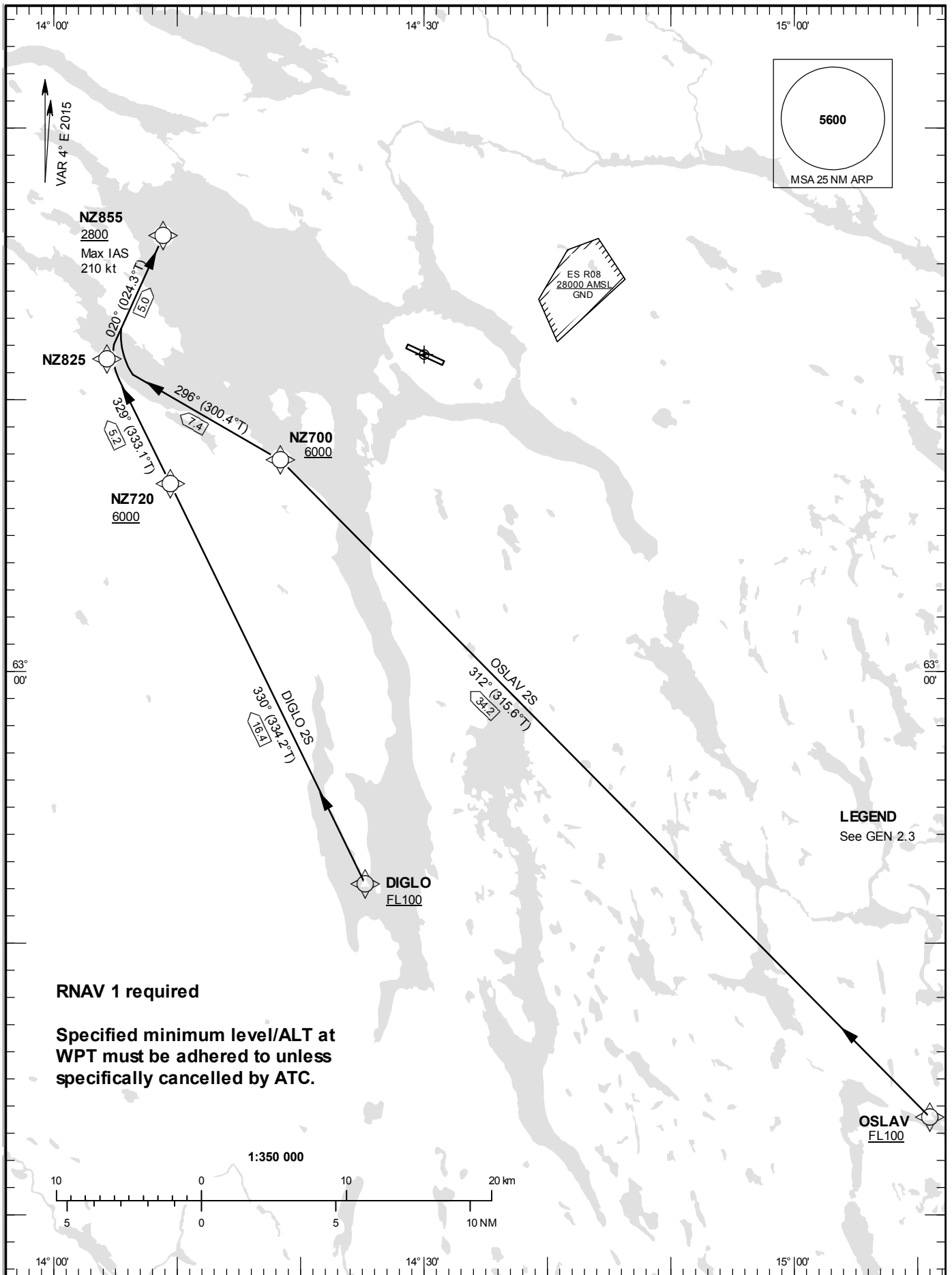


STANDARD INSTRUMENT
ARRIVAL CHART (STAR) -
ICAO

HGT and ALT in ft
BRG are MAG (True)
TA 6000 ft AMSL

ÖSTERSUND TOWER 135.655

RNAV (GNSS) STAR
RWY 12



Prescribed Coding of RNAV (GNSS) STAR for RWY 12

REMARK

RNAV 1 required.

Specified minimum level/ALT at WPT must be adhered to unless specifically cancelled to ATC.

Operators unable flying RNAV shall inform ATC by using phraseology "UNABLE RNAV STAR". ATC will then provide vectors or provide clearance via conventional STAR.

STAR DIGLO 2S

Path Term	Waypoint Identifier	Fly-over	Course °M(°T)	Dist (NM)	Turn Dir	Rest Alts (ft AMSL)	Speed Limits (kt)	VPA/RDH	Rec Navaid	Navigation Specification
IF	DIGLO					+FL100				RNAV 1
TF	NZ720		330°(334.2°)	16.4		+6000				RNAV 1
TF	NZ825		329°(333.1°)	5.2						RNAV 1
TF	NZ855		020°(024.3°)	5.0		+2800	-210			RNAV 1

STAR instruction: DIGLO (FL100 or above) – NZ720 (6000 ft or above) – NZ825 – NZ855 (max IAS 210 kt, 2800 ft or above)

STAR OSLAV 2S

Path Term	Waypoint Identifier	Fly-over	Course °M(°T)	Dist (NM)	Turn Dir	Rest Alts (ft AMSL)	Speed Limits (kt)	VPA/RDH	Rec Navaid	Navigation Specification
IF	OSLAV					+FL100				RNAV 1
TF	NZ700		312°(315.6°)	34.2		+6000				RNAV 1
TF	NZ825		296°(300.4°)	7.4						RNAV 1
TF	NZ855		020°(024.3°)	5.0		+2800	-210			RNAV 1

STAR instruction: OSLAV (FL100 or above) – NZ700 (6000 ft or above) – NZ825 – NZ855 (max IAS 210 kt, 2800 ft or above)