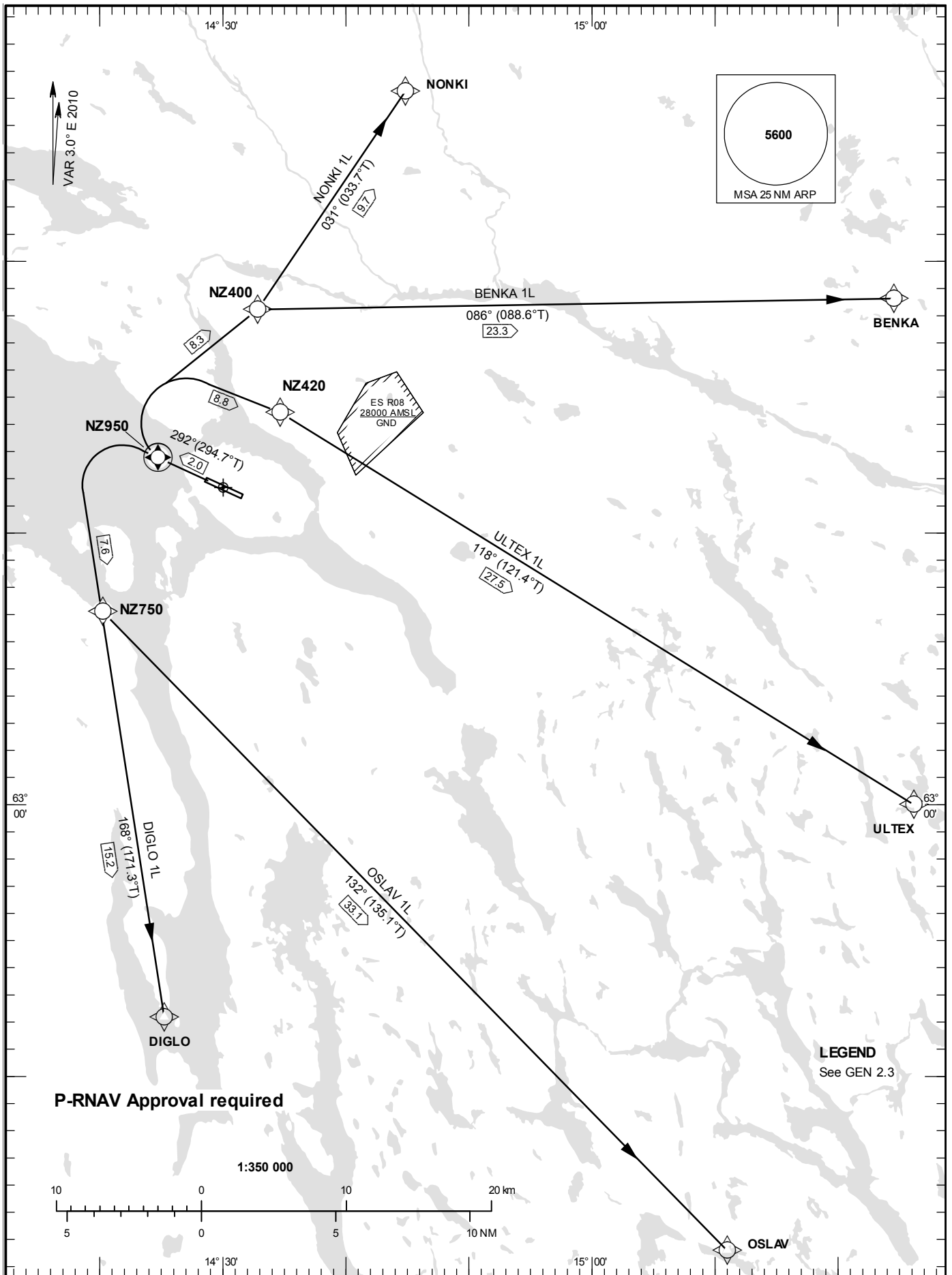


STANDARD INSTRUMENT  
DEPARTURE CHART (SID) -  
ICAO

HGT and ALT in ft  
BRG are MAG (True)  
TA 6000 ft AMSL

ÖSTERSUND TOWER 135.655

RNAV (GNSS) SID RWY 30



P-RNAV Approval required

LEGEND  
See GEN 2.3

**Prescribed Coding of RNAV (GNSS) SID for RWY 30**

## REMARK

INITIAL CLIMB CLEARANCE: Climb to 6000 ft unless otherwise specified. Common to all RNAV SID.

P-RNAV Approval required.

MNM climb gradient required by ATC: Aircraft proceeding on SID shall use 6.6% (400 ft/NM) as a minimum gradient of climb up to 6000 ft MSL. Aircraft unable to conform to this procedure shall inform ATC accordingly.

RNAV SID	Path Descriptor	Waypoint Identifier	Fly-over	Course °M(°T)	Turn Direction	Altitude	Speed	VPA/RDH	Rec Navaid	Navigation Specification
BENKA 1L (BENK1L)	CF	NZ950	Y	292°	R				OSS	
	DF	NZ400								
	TF	BENKA								

SID instruction: Climb on track 292° to NZ950 – NZ400 – BENKA

RNAV SID	Path Descriptor	Waypoint Identifier	Fly-over	Course °M(°T)	Turn Direction	Altitude	Speed	VPA/RDH	Rec Navaid	Navigation Specification
DIGLO 1L (DIGL1L)	CF	NZ950	Y	292°	L				OSS	
	DF	NZ750								
	TF	DIGLO								

SID instruction: Climb on track 292° to NZ950 – NZ750 – DIGLO

RNAV SID	Path Descriptor	Waypoint Identifier	Fly-over	Course °M(°T)	Turn Direction	Altitude	Speed	VPA/RDH	Rec Navaid	Navigation Specification
NONKI 1L (NONK1L)	CF	NZ950	Y	292°	R				OSS	
	DF	NZ400								
	TF	NONKI								

SID instruction: Climb on track 292° to NZ950 – NZ400 – NONKI

RNAV SID	Path Descriptor	Waypoint Identifier	Fly-over	Course °M(°T)	Turn Direction	Altitude	Speed	VPA/RDH	Rec Navaid	Navigation Specification
OSLAV 1L (OSLA1L)	CF	NZ950	Y	292°	L				OSS	
	DF	NZ750								
	TF	OSLAV								

SID instruction: Climb on track 292° to NZ950 – NZ750 – OSLAV

RNAV SID	Path Descriptor	Waypoint Identifier	Fly-over	Course °M(°T)	Turn Direction	Altitude	Speed	VPA/RDH	Rec Navaid	Navigation Specification
ULTEX 1L (ULTE1L)	CF	NZ950	Y	292°	R				OSS	
	DF	NZ420								
	TF	ULTEX								

SID instruction: Climb on track 292° to NZ950 – NZ420 – ULTEX