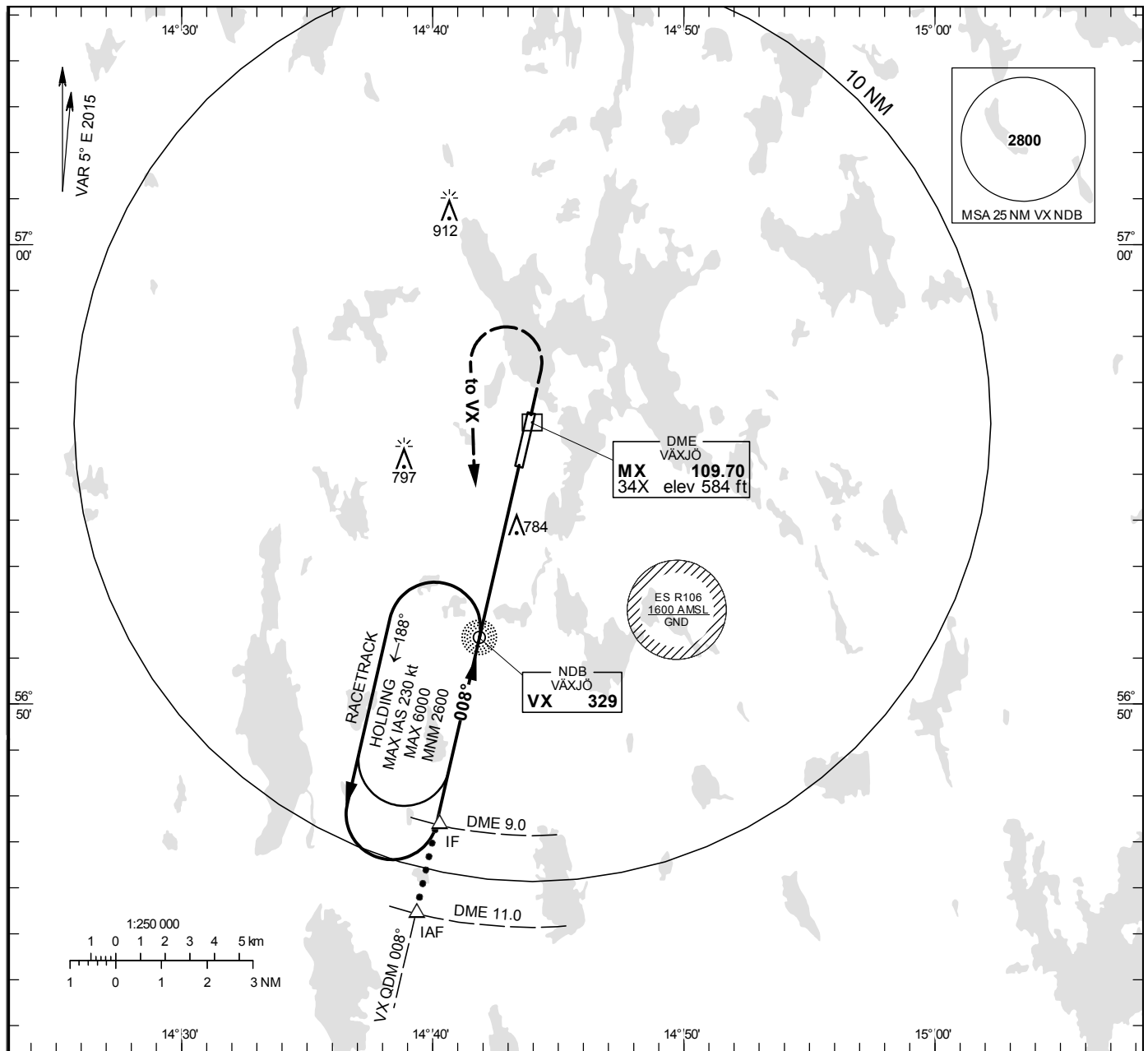


NDB RWY 01

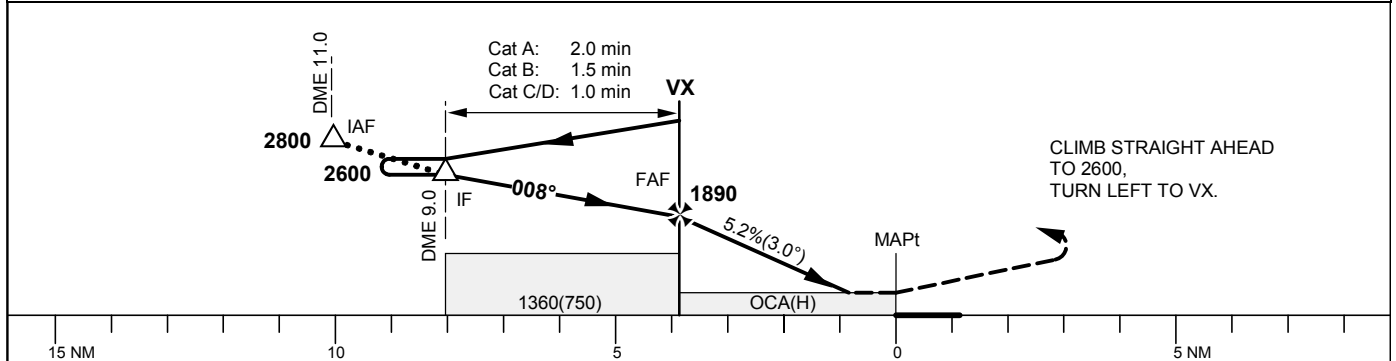
KRONOBERG TOWER 118.155

THR ELEV 610 ft, AD ELEV 610 ft  
 OCH are related to THR.  
 Circling OCH are related to AD ELEV.  
 BRG are MAG  
 ALT. HGT and ELEV in ft.

INSTRUMENT  
 APPROACH  
 CHART – ICAO



TA 5000 ft AMSL



| Cat of ACFT          | OCA (H)   |           |           |           | Final approach  |        | Distance FAF-MAPt 3.9 NM |      |      |      |      |      |
|----------------------|-----------|-----------|-----------|-----------|-----------------|--------|--------------------------|------|------|------|------|------|
|                      | A         | B         | C         | D         | DME MX NM       | ALT    |                          |      |      |      |      |      |
| Straight-in Approach | 1030(420) |           |           |           |                 | 1630   | 1310                     |      |      |      |      |      |
| Circling             | 1080(470) | 1100(490) | 1200(590) | 1310(700) | GS              | kt     | 80                       | 100  | 120  | 140  | 160  | 180  |
|                      |           |           |           |           | Time            | min:s  | 2:54                     | 2:19 | 1:56 | 1:39 | 1:27 | 1:17 |
|                      |           |           |           |           | Rate of descent | ft/min | 425                      | 535  | 640  | 745  | 850  | 960  |