

**VISUAL APPROACH CHART - ICAO**

1:250000  
1 0 1 2 3 4 5 km  
1 0 1 2 3 NM

**AD ELEV 59 FEET**

ELEV and ALT in ft  
HGT in ft above AD ELEV

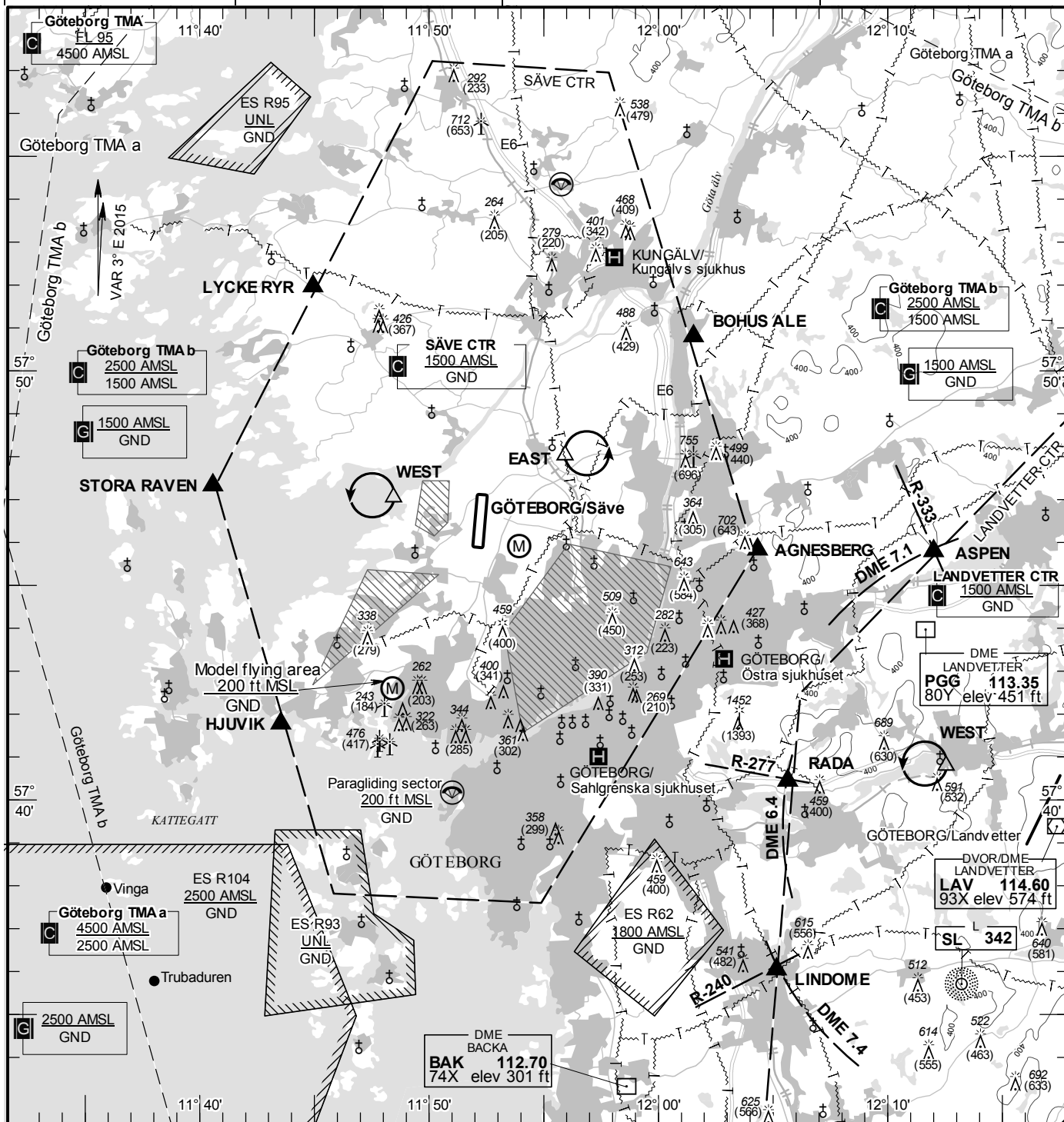
**TA 5000 AMSL**

**SÄVE TOWER**

**119.055**

**AD 2 ESGP 6-1**

**GÖTEBORG/Säve  
SWEDEN**



**Communication failure**

- 1 SQUAWK 7600
- 2 Enter CTR via AGNESBERG - Holding EAST or via STORA RAVEN - Holding WEST at or below 1500 ft AMSL to traffic circuit. Transmit blind your intentions.
- 3 Flash LDG-lights and watch TWR for optical signals.

**Remark**

Obstacle below 197 ft AGL not shown in CTR.  
Noise sensitive area, to be avoided.

RWY	THR	PAPI
NR	ELEV	(MEHT)
01	51 ft	NIL
19	48 ft	Left/3.00° (56 ft)

**Entry / exit point**

LYCKE RYR	575157N 0114456E
BOHUS ALE	575047N 0120132E
AGNESBERG	574549N 0120419E
HJUVIK	574146N 0114332E
STORA RAVEN	574719N 0114034E

**Legend**

See GEN 2.3

**Holding**

**EAST:** Hold over powerline west of road E6, east of point 574801N 0115556E  
**WEST:** Hold west of Nolvik over the sea, west of point 574702N 0114826E