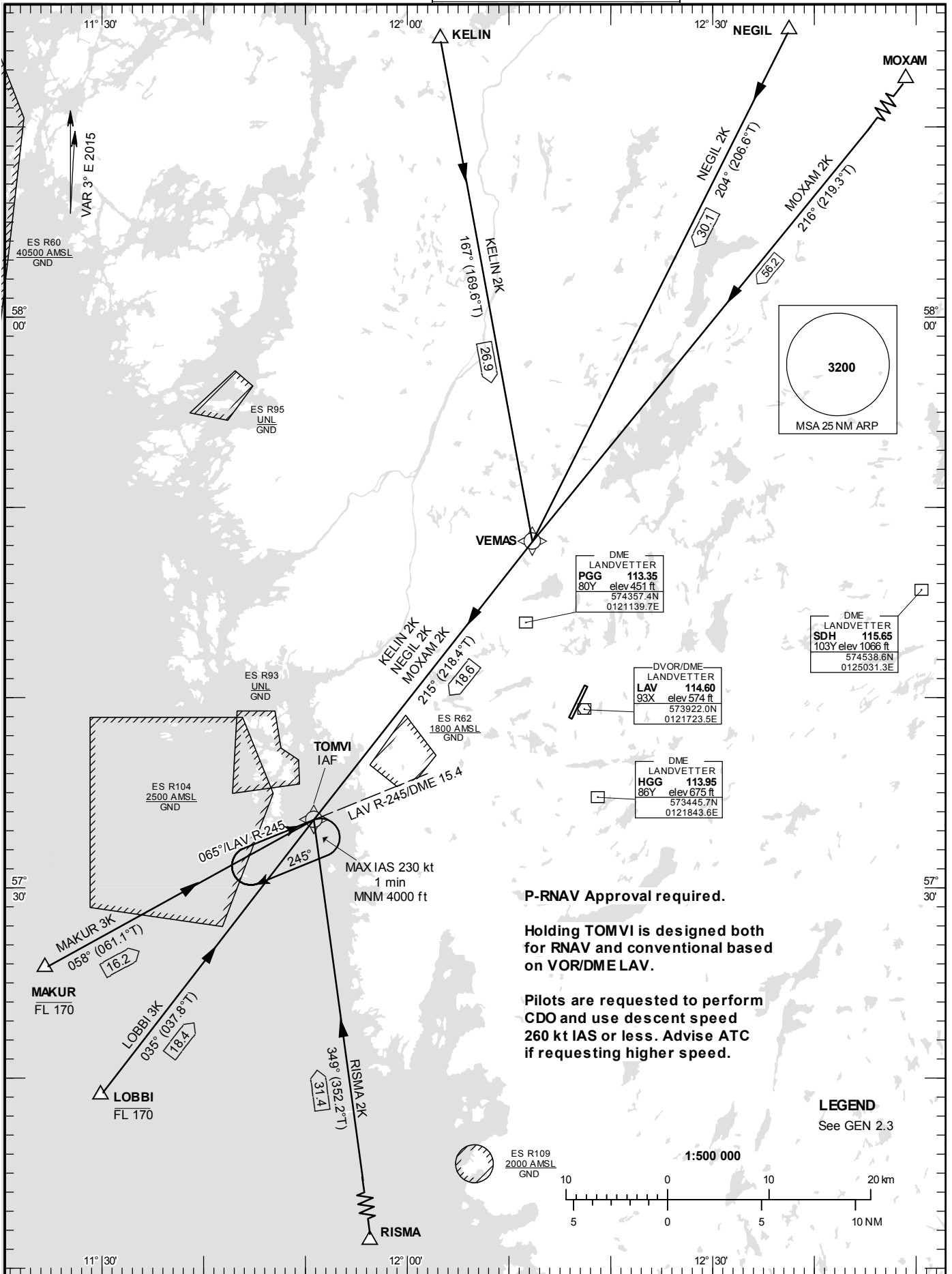


STANDARD INSTRUMENT
ARRIVAL CHART (STAR) -
ICAO

HGT and ALT in ft
BRG are MAG (True)
TA 5000 ft AMSL

LANDVETTER TOWER	118.605
LANDVETTER ATIS	118.380
GÖTEBORG CONTROL	124.680

RNAV (DME/DME or GNSS)
STAR RWY 03



P-RNAV Approval required.

Holding TOMVI is designed both for RNAV and conventional based on VOR/DME LAV.

Pilots are requested to perform CDO and use descent speed 260 kt IAS or less. Advise ATC if requesting higher speed.

LEGEND
See GEN 2.3

Prescribed Coding of RNAV STAR for RWY 03

REMARK

Following RNAV STARs are primarily used during periods of high to medium traffic density. Aircraft will be radar vectored to final.

Approval for P-RNAV (RNAV1) required.

Operators unable flying P-RNAV (RNAV1) shall inform ATC by using phraseology "UNABLE RNAV STAR". Radar vectors will then be provided.

Pilots are requested to perform CDO and use descent speed 260 kt IAS or less. Advise ATC if requesting higher speed.

Aircraft to GÖTEBORG/Landvetter shall not be operated at an airspeed of more than 250 kt IAS below FL100 unless otherwise instructed.

When established on ILS final approach track, maintain 160 kt IAS or more until passing OM, unless otherwise instructed. If unable, inform ATC immediately.

In case of radio communication failure, see AD 2.22 para 4.

RNAV STAR	Path Descriptor	Waypoint Identifier	Fly-over	Course °M(°T)	Turn Direction	Altitude	Speed	VPA/RDH	Rec Navaid	Navigation Specification
KELIN 2K	IF	KELIN								RNAV1
	TF	VEMAS								RNAV1
	TF	TOMVI								RNAV1

STAR instruction: KELIN – VEMAS – TOMVI – radar vectors

RNAV STAR	Path Descriptor	Waypoint Identifier	Fly-over	Course °M(°T)	Turn Direction	Altitude	Speed	VPA/RDH	Rec Navaid	Navigation Specification
LOBBI 3K	IF	LOBBI				-FL170				RNAV1
	TF	TOMVI								RNAV1

STAR instruction: LOBBI (FL170 or below) – TOMVI – radar vectors

RNAV STAR	Path Descriptor	Waypoint Identifier	Fly-over	Course °M(°T)	Turn Direction	Altitude	Speed	VPA/RDH	Rec Navaid	Navigation Specification
MAKUR 3K	IF	MAKUR				-FL170				RNAV1
	TF	TOMVI								RNAV1

STAR instruction: MAKUR (FL170 or below) – TOMVI – radar vectors

RNAV STAR	Path Descriptor	Waypoint Identifier	Fly-over	Course °M(°T)	Turn Direction	Altitude	Speed	VPA/RDH	Rec Navaid	Navigation Specification
MOXAM 2K	IF	MOXAM								RNAV1
	TF	VEMAS								RNAV1
	TF	TOMVI								RNAV1

STAR instruction: MOXAM – VEMAS – TOMVI – radar vectors

RNAV STAR	Path Descriptor	Waypoint Identifier	Fly-over	Course °M(°T)	Turn Direction	Altitude	Speed	VPA/RDH	Rec Navaid	Navigation Specification
NEGIL 2K	IF	NEGIL								RNAV1
	TF	VEMAS								RNAV1
	TF	TOMVI								RNAV1

STAR instruction: NEGIL – VEMAS – TOMVI – radar vectors

RNAV STAR	Path Descriptor	Waypoint Identifier	Fly-over	Course °M(°T)	Turn Direction	Altitude	Speed	VPA/RDH	Rec Navaid	Navigation Specification
RISMA 2K	IF	RISMA								RNAV1
	TF	TOMVI								RNAV1

STAR instruction: RISMA – TOMVI – radar vectors