

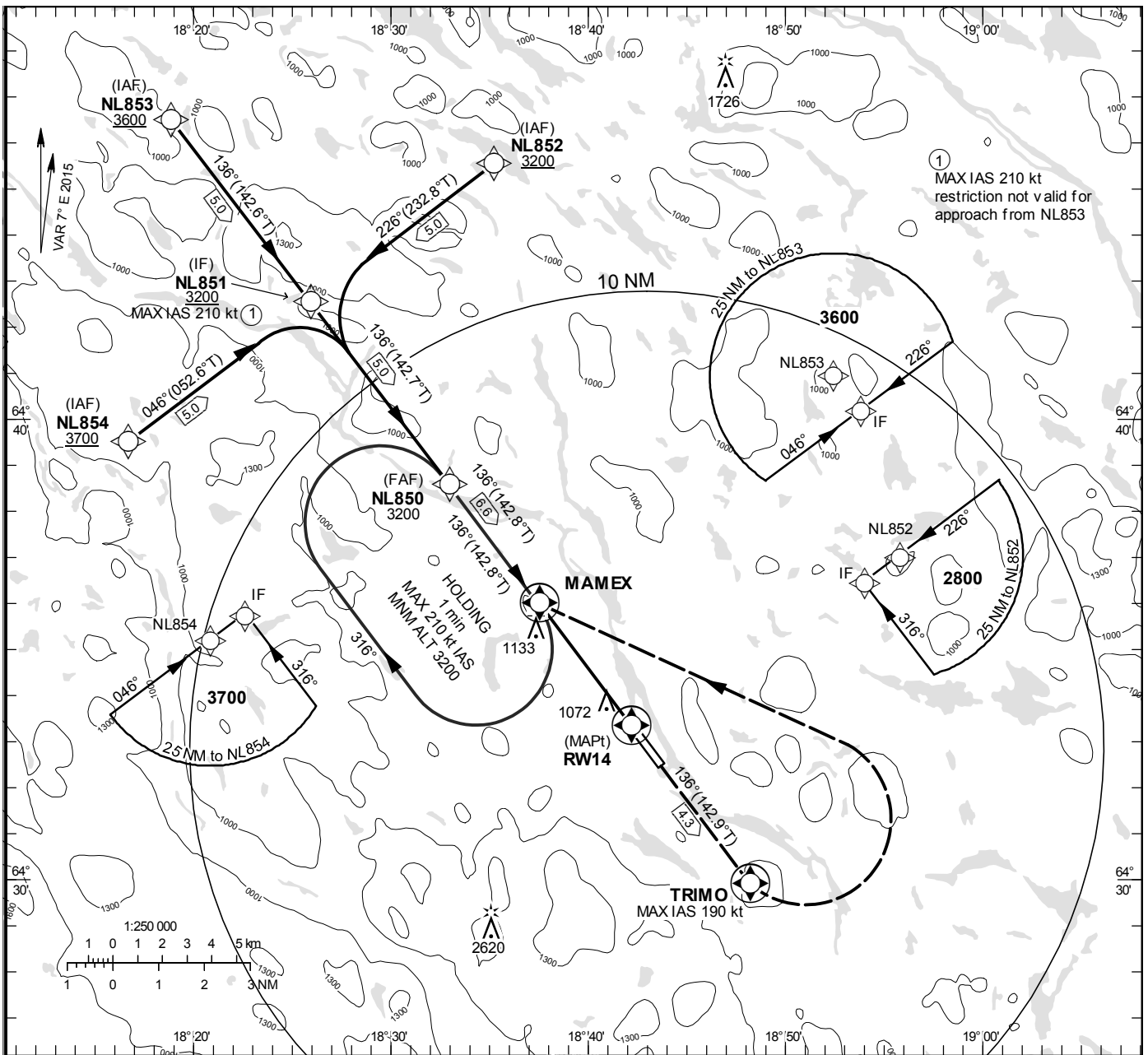
**INSTRUMENT
APPROACH
CHART – ICAO**

THR ELEV 704.5 ft, AD ELEV 705 ft
 OCH are related to THR.
 BRG are MAG (True).
 ALT, HGT and ELEV in ft.

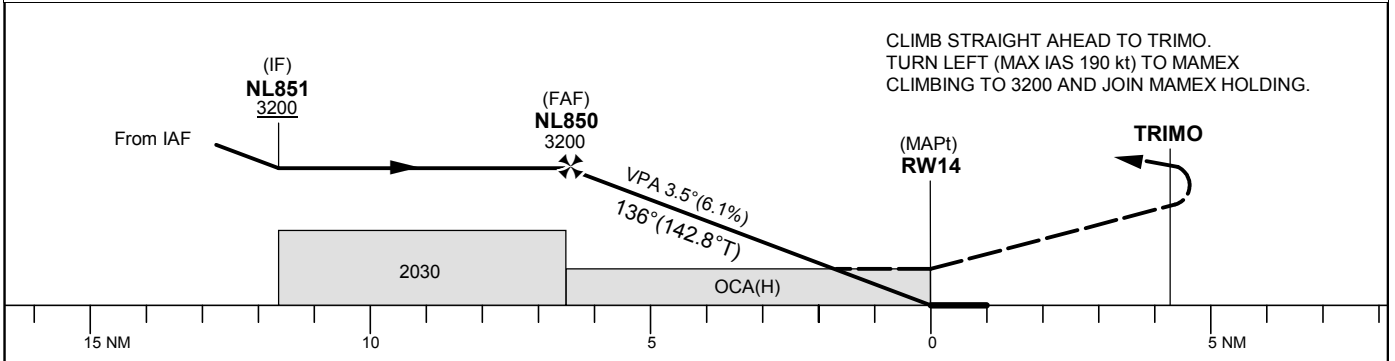
LYCKSELE INFORMATION 122.230

RNP RWY 14

EGNOS Ch 52350 E 14A



TA 5000 ft AMSL RDH 50 ft



CLIMB STRAIGHT AHEAD TO TRIMO.
 TURN LEFT (MAX IAS 190 kt) TO MAMEX
 CLIMBING TO 3200 AND JOIN MAMEX HOLDING.

Cat of ACFT	OCA (H)			Final approach Dist to RW 14	Distance FAF-MAPt 6.6 NM					
	A	B	C		6	5	4	3	2	
LPV	1209(505)	1223(519)	1233(529)	ALT	2670	2350	2030	1710	1390	
RNAV	1380(680)			GS	kt	80	100	120	140	160
				Rate of descent	ft/min	495	620	745	865	990

RNP RWY 14 via NL852

Path Desc	Waypoint Identifier	Fly-over	Course °M(°T)	Dist (NM)	Turn Dir	Altitude	Speed	VPA/RDH	Rec Navaid	Navigation Specification
IF	NL852	-	-	-	-	-	-	-	-	RNP APCH
TF	NL851	-	226°(232.8°)	5.0	-	+3200	-210	-	-	RNP APCH

RNP RWY 14 via NL853

Path Desc	Waypoint Identifier	Fly-over	Course °M(°T)	Dist (NM)	Turn Dir	Altitude	Speed	VPA/RDH	Rec Navaid	Navigation Specification
IF	NL853	-	-	-	-	+3600	-	-	-	RNP APCH
TF	NL851	-	136°(142.6°)	5.0	-	+3200	-	-	-	RNP APCH

RNP RWY 14 via NL854

Path Desc	Waypoint Identifier	Fly-over	Course °M(°T)	Dist (NM)	Turn Dir	Altitude	Speed	VPA/RDH	Rec Navaid	Navigation Specification
IF	NL854	-	-	-	-	+3700	-	-	-	RNP APCH
TF	NL851	-	046°(052.6°)	5.0	-	+3200	-210	-	-	RNP APCH

Path Desc	Waypoint Identifier	Fly-over	Course °M(°T)	Dist (NM)	Turn Dir	Altitude	Speed	VPA/RDH	Rec Navaid	Navigation Specification
IF	NL851	-	-	-	-	+3200	-	-	-	RNP APCH
TF	NL850	-	136°(142.7°)	5.0	-	@3200	-	-	-	RNP APCH
TF	RW14	Y	136°(142.8°)	6.6	-	@755	-	-3.50/50	-	RNP APCH
TF	TRIMO	Y	136°(142.9°)	4.3	L	-	-190	-	-	RNP APCH
DF	MAMEX	Y	-	-	-	-	-	-	-	RNP APCH
HM	MAMEX	Y	136°(142.8°)	-	R	+3200	-210	-	-	RNAV 1

FAS Data Block

RNP RWY 14

Input data

Operation Type	0
SBAS Provider	1
Airport Identifier	ESNL
Runway	14
Runway Direction	0
Approach Performance Designator	0
Route Indicator	
Reference Path Data Selector	0
Reference Path Identifier	E14A
LTP/FTP Latitude	643320.3600N
LTP/FTP Longitude	0184212.0500E
LTP/FTP Ellipsoidal Height (metres)	241.8
FPAP Latitude	643232.6400N
Delta FPAP Latitude (seconds)	-47.7200
FPAP Longitude	0184335.7700E
Delta FPAP Longitude (seconds)	83.7200
Threshold Crossing Height	50.00
TCH Units Selector	0
Glidepath Angle (degrees)	3.50
Course Width (metres)	105.00
Length Offset (metres)	0
HAL (metres)	40.0
VAL (metres)	50.0

Output data

Data Block	10 0C 0E 13 05 0E 00 00 01 34 31 05 D0 4B B4 1B A4 CF 06 08 72 1D 30 8B FE 10 8E 02 F4 01 5E 01 64 00 C8 FA C1 D3 5B 24
Calculated CRC Value	C1D35B24

Required Additional Data

ICAO Code	ES
LTP/FTP Orthometric Height (metres)	214.7
FPAP Orthometric Height (metres)	210.0