

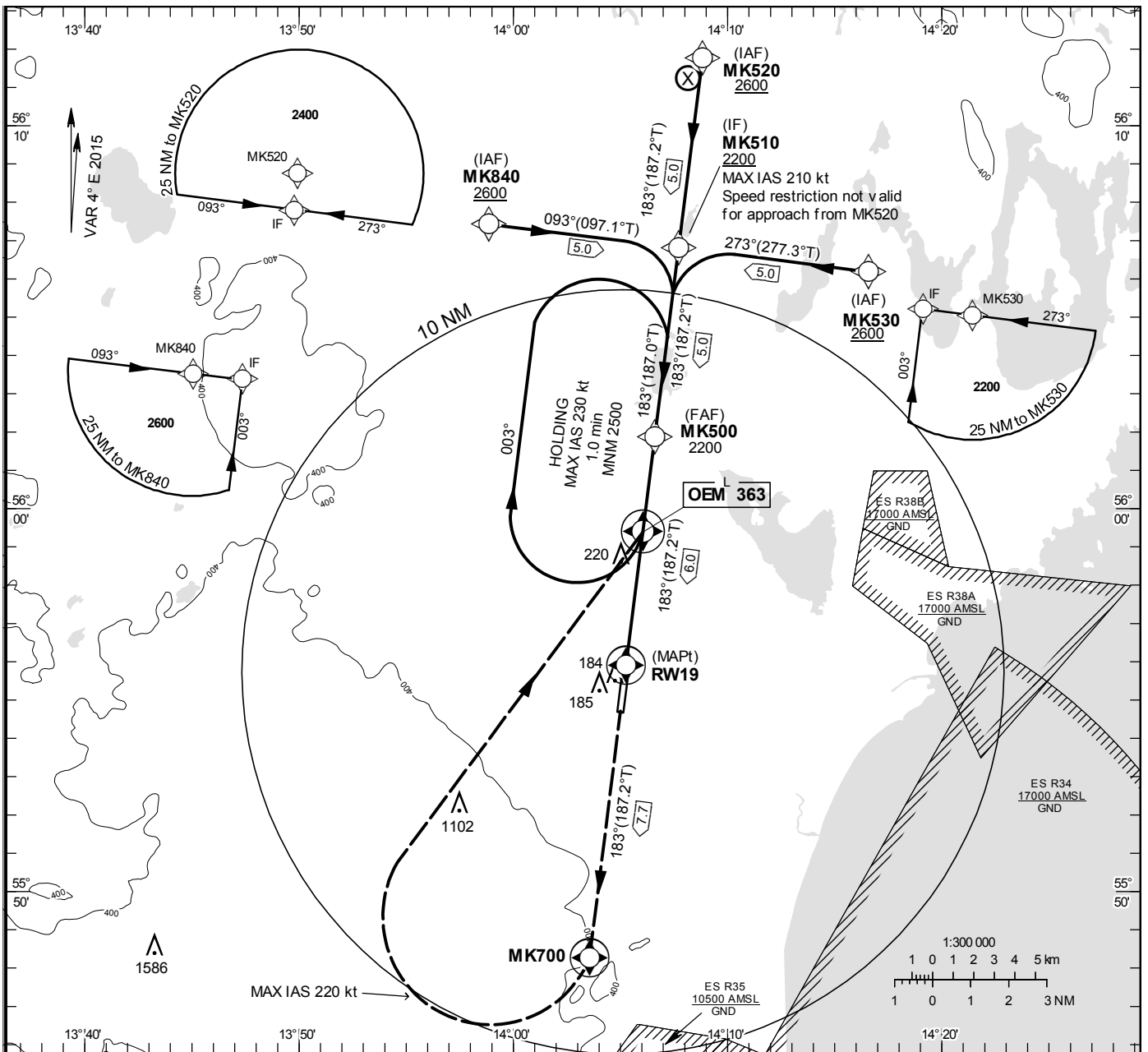
**INSTRUMENT
APPROACH
CHART – ICAO**

THR ELEV 73.8 ft, AD ELEV 77 ft
 OCH are related to THR.
 BRG are MAG (True).
 ALT, HGT and ELEV in ft.
BARO-VNAV NOT BELOW -25° C

KRISTIANSTAD TOWER 129.355

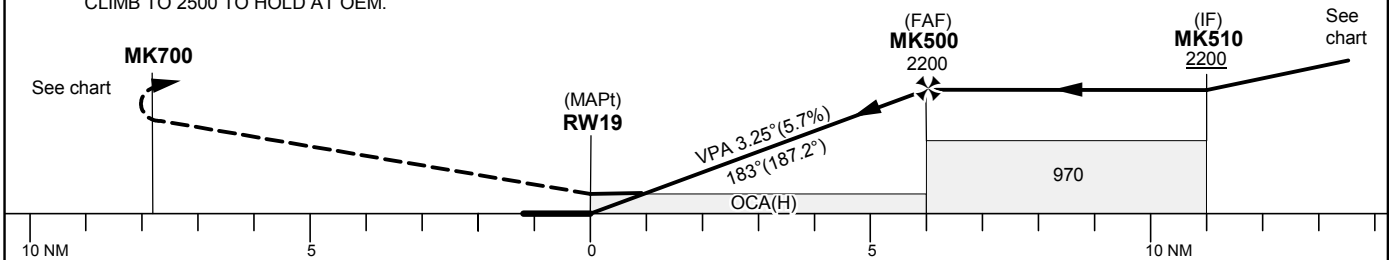
RNP RWY 19

EGNOS Ch 60050 E 19A



TA 5000 ft AMSL RDH 50.0 ft

CLIMB STRAIGHT AHEAD TO MK700,
 TURN RIGHT (MAX IAS 220 kt) AND CONTINUE
 CLIMB TO 2500 TO HOLD AT OEM.



Cat of ACFT	OCA (H)				Final approach Dist to RWY 19	Distance FAF-MAPt 6.0 NM						
	A	B	C	D		5	4	3	2			
LPV	316 (243)	329 (256)	338 (265)	349 (276)	1850	1510	1160	820				
LNAV/VNAV	320 (250)	330 (260)	340 (270)	360 (280)								
LNAV	470 (400)											
					GS	kt	80	100	120	140	160	180
					Rate of descent	ft/min	460	575	690	805	920	1035

RNP RWY 19 via MK520

Path Desc	Waypoint Identifier	Fly-over	Course °M(°T)	Dist (NM)	Turn Dir	Altitude	Speed	VPA/RDH	Rec Navaid	Navigation Specification
IF	MK520	-	-	-	-	+2600	-	-	-	RNP APCH
TF	MK510	-	183 ⁰ (187.2 ⁰)	5.0	-	+2200	-	-	-	RNP APCH

RNP RWY 19 via MK840

Path Desc	Waypoint Identifier	Fly-over	Course °M(°T)	Dist (NM)	Turn Dir	Altitude	Speed	VPA/RDH	Rec Navaid	Navigation Specification
IF	MK840	-	-	-	-	+2600	-	-	-	RNP APCH
TF	MK510	-	093 ⁰ (097.2 ⁰)	5.0	-	+2200	-210	-	-	RNP APCH

RNP RWY 19 via MK530

Path Desc	Waypoint Identifier	Fly-over	Course °M(°T)	Dist (NM)	Turn Dir	Altitude	Speed	VPA/RDH	Rec Navaid	Navigation Specification
IF	MK530	-	-	-	-	+2600	-	-	-	RNP APCH
TF	MK510	-	273 ⁰ (277.3 ⁰)	5.0	-	+2200	-210	-	-	RNP APCH

Path Desc	Waypoint Identifier	Fly-over	Course °M(°T)	Dist (NM)	Turn Dir	Altitude	Speed	VPA/RDH	Rec Navaid	Navigation Specification
IF	MK510	-	-	-	-	+2200	-	-	-	RNP APCH
TF	MK500	-	183 ⁰ (187.2 ⁰)	5.0	-	@2200	-	-	-	RNP APCH
TF	RW19	Y	183 ⁰ (187.2 ⁰)	6.0	-	@124	-	-3.25/50	-	RNP APCH
TF	MK700	Y	183 ⁰ (187.2 ⁰)	7.7	-	-	-220	-	-	RNP APCH
DF	OEM	Y	-	-	R	+2500	-220	-	-	RNP APCH
HM	OEM	Y	183 ⁰ (187.0 ⁰)	-	R	+2500	-230	-	-	RNAV 1

FAS Data Block

RNP RWY 19

Input data

Operation Type	0
SBAS Provider	1
Airport Identifier	ESMK
Runway	19
Runway Direction	0
Approach Performance Designator	0
Route Indicator	
Reference Path Data Selector	0
Reference Path Identifier	E19A
LTP/FTP Latitude	555553.6000N
LTP/FTP Longitude	0140515.8600E
LTP/FTP Ellipsoidal Height (metres)	57.3
FPAP Latitude	555439.3850N
Delta FPAP Latitude (seconds)	-74.2150
FPAP Longitude	0140459.2860E
Delta FPAP Longitude (seconds)	-16.5740
Threshold Crossing Height	15.00
TCH Units Selector	1
Glidepath Angle (degrees)	3.25
Course Width (metres)	105.00
Length Offset (metres)	104
HAL (metres)	40.0
VAL (metres)	50.0

Output data

Data Block	10 0B 0D 13 05 13 00 00 01 39 31 05 00 D3 00 18 A8 B9 0B 06 3D 16 32 BC FD 84 7E FF 2C 81 45 01 64 0D C8 FA 19 EB B2 B6
Calculated CRC Value	19EBB2B6

Required Additional Data

ICAO Code	ES
LTP/FTP Orthometric Height (metres)	22.5
FPAP Orthometric Height (metres)	23.5